



[Go to Product page](#)

Datasheet for ABIN7170681  
**anti-SRPK3 antibody (AA 1-300)**

2 Images

### Overview

Quantity:	100 µg
Target:	SRPK3
Binding Specificity:	AA 1-300
Reactivity:	Human
Host:	Rabbit
Clonality:	Polyclonal
Conjugate:	This SRPK3 antibody is un-conjugated
Application:	ELISA, Immunohistochemistry (IHC)

### Product Details

Immunogen:	Recombinant Human SRSF protein kinase 3 protein (1-300AA)
Isotype:	IgG
Cross-Reactivity:	Human
Purification:	>95%, Protein G purified

### Target Details

Target:	SRPK3
Alternative Name:	SRPK3 ( <a href="#">SRPK3 Products</a> )
Background:	Background: Serine/arginine-rich protein-specific kinase which specifically phosphorylates its substrates at serine residues located in regions rich in arginine/serine dipeptides, known as RS

## Target Details

---

domains. Phosphorylates the SR splicing factor SRSF1 and the lamin-B receptor (LBR) in vitro. Required for normal muscle development.

Aliases: MSSK-1 antibody, MSSK1 antibody, Muscle specific serine kinase 1 antibody, Muscle-specific serine kinase 1 antibody, Serine/arginine rich protein specific kinase 3 antibody, Serine/arginine-rich protein-specific kinase 3 antibody, Serine/threonine protein kinase 23 antibody, Serine/threonine protein kinase SRPK3 antibody, Serine/threonine-protein kinase 23 antibody, SFRS protein kinase 3 antibody, SR-protein-specific kinase 3 antibody, SrpK3 antibody, SRPK3\_HUMAN antibody, SRSF protein kinase 3 antibody, STK 23 antibody, STK23 antibody

UniProt: [Q9UPE1](#)

## Application Details

---

Application Notes: Recommended dilution: IHC:1:20-1:200,

Restrictions: For Research Use only

## Handling

---

Format: Liquid

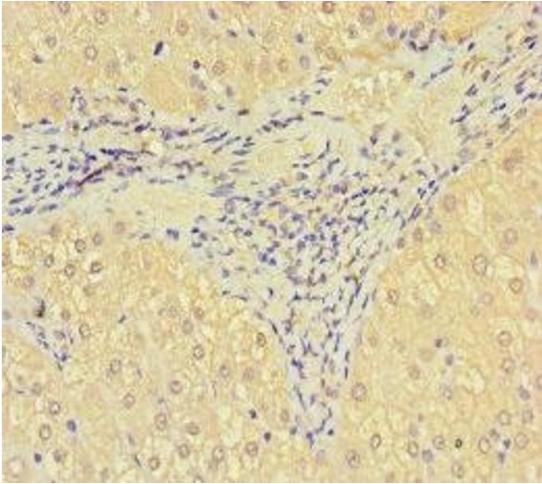
Buffer: Preservative: 0.03 % Proclin 300  
Constituents: 50 % Glycerol, 0.01M PBS, PH 7.4

Preservative: ProClin

Precaution of Use: This product contains ProClin: a POISONOUS AND HAZARDOUS SUBSTANCE which should be handled by trained staff only.

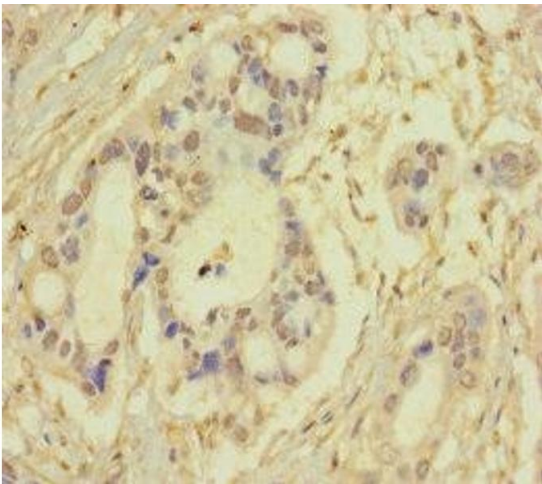
Storage: -20 °C,-80 °C

Storage Comment: Upon receipt, store at -20°C or -80°C. Avoid repeated freeze.



#### Immunohistochemistry

**Image 1.** Immunohistochemistry of paraffin-embedded human liver tissue using ABIN7170681 at dilution of 1:100



#### Immunohistochemistry

**Image 2.** Immunohistochemistry of paraffin-embedded human pancreatic cancer using ABIN7170681 at dilution of 1:100