

Datasheet for ABIN7170778
anti-SREBF1 antibody (AA 38-201)

4 Images

[Go to Product page](#)

Overview

Quantity:	100 µg
Target:	SREBF1
Binding Specificity:	AA 38-201
Reactivity:	Human
Host:	Rabbit
Clonality:	Polyclonal
Conjugate:	This SREBF1 antibody is un-conjugated
Application:	Western Blotting (WB), ELISA, Immunohistochemistry (IHC), Immunofluorescence (IF)

Product Details

Immunogen:	Recombinant Human Sterol regulatory element-binding protein 1 protein (38-201AA)
Isotype:	IgG
Cross-Reactivity:	Human
Purification:	>95%, Protein G purified

Target Details

Target:	SREBF1
Alternative Name:	SREBF1 (SREBF1 Products)
Background:	Background: Transcriptional activator required for lipid homeostasis. Regulates transcription of the LDL receptor gene as well as the fatty acid and to a lesser degree the cholesterol synthesis

Target Details

pathway (By similarity). Binds to the sterol regulatory element 1 (SRE-1) (5\\\'-ATCACCCCAC-3\\\''). Has dual sequence specificity binding to both an E-box motif (5\\\'-ATCACGTGA-3\\\'') and to SRE-1 (5\\\'-ATCACCCCAC-3\\\'').

Aliases: ADD 1 antibody, bHLHd1 antibody, Class D basic helix-loop-helix protein 1 antibody, D630008H06 antibody, Processed sterol regulatory element-binding protein 1 antibody, SRBP1_HUMAN antibody, SREBF 1 antibody, SREBF1 antibody, SREBP 1 antibody, SREBP 1c antibody, SREBP-1 antibody, SREBP1 antibody, Sterol regulatory element binding protein 1 antibody, Sterol Regulatory Element Binding Transcription Factor 1 / Protein 1 antibody, Sterol regulatory element binding transcription factor 1 antibody, Sterol regulatory element-binding transcription factor 1 antibody

UniProt: [P36956](#)

Pathways: [AMPK Signaling](#), [Caspase Cascade in Apoptosis](#), [Negative Regulation of Hormone Secretion](#), [Regulation of Lipid Metabolism by PPARalpha](#)

Application Details

Application Notes: Recommended dilution: WB:1:1000-1:5000, IHC:1:200-1:500, IF:1:50-1:200,

Restrictions: For Research Use only

Handling

Format: Liquid

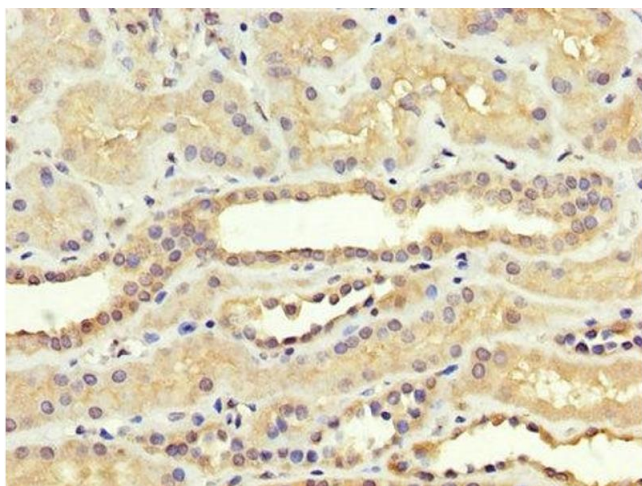
Buffer: Preservative: 0.03 % Proclin 300
Constituents: 50 % Glycerol, 0.01M PBS, pH 7.4

Preservative: ProClin

Precaution of Use: This product contains ProClin: a POISONOUS AND HAZARDOUS SUBSTANCE which should be handled by trained staff only.

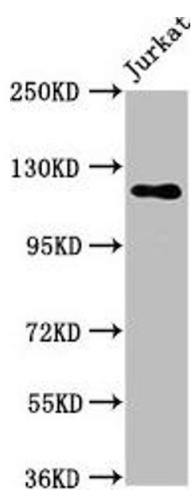
Storage: -20 °C,-80 °C

Storage Comment: Upon receipt, store at -20°C or -80°C. Avoid repeated freeze.



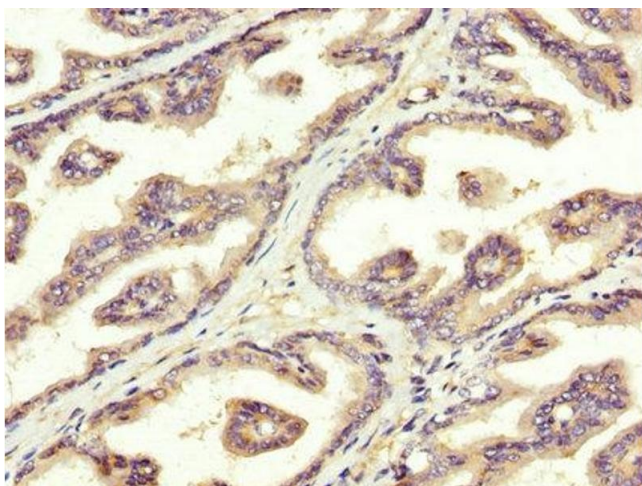
Immunohistochemistry

Image 1. IHC image of ABIN7170778 diluted at 1:300 and staining in paraffin-embedded human kidney tissue performed on a Leica Bond™ system. After dewaxing and hydration, antigen retrieval was mediated by high pressure in a citrate buffer (pH 6.0). Section was blocked with 10% normal goat serum 30min at RT. Then primary antibody (1% BSA) was incubated at 4°C overnight. The primary is detected by a biotinylated secondary antibody and visualized using an HRP conjugated SP system.



Western Blotting

Image 2. Western Blot Positive WB detected in: Jurkat whole cell lysate All lanes: SREBF1 antibody at 5.7 µg/mL Secondary Goat polyclonal to rabbit IgG at 1/50000 dilution Predicted band size: 122, 114, 112, 125, 49, 46 kDa Observed band size: 122 kDa



Immunohistochemistry

Image 3. IHC image of ABIN7170778 diluted at 1:300 and staining in paraffin-embedded human prostate tissue performed on a Leica Bond™ system. After dewaxing and hydration, antigen retrieval was mediated by high pressure in a citrate buffer (pH 6.0). Section was blocked with 10% normal goat serum 30min at RT. Then primary antibody (1% BSA) was incubated at 4°C overnight. The primary is detected by a biotinylated secondary antibody and visualized using an HRP conjugated SP system.

Please check the [product details page](#) for more images. Overall 4 images are available for ABIN7170778.