

Datasheet for ABIN7170782
anti-SREBF2 antibody (AA 75-164)

3 Images

[Go to Product page](#)

Overview

Quantity:	100 µg
Target:	SREBF2
Binding Specificity:	AA 75-164
Reactivity:	Human
Host:	Rabbit
Clonality:	Polyclonal
Conjugate:	This SREBF2 antibody is un-conjugated
Application:	ELISA, Immunohistochemistry (IHC), Immunofluorescence (IF)

Product Details

Immunogen:	Recombinant Human Sterol regulatory element-binding protein 2 protein (75-164AA)
Isotype:	IgG
Cross-Reactivity:	Human
Purification:	>95%, Protein G purified

Target Details

Target:	SREBF2
Alternative Name:	SREBF2 (SREBF2 Products)
Background:	Background: Transcriptional activator required for lipid homeostasis. Regulates transcription of the LDL receptor gene as well as the cholesterol and to a lesser degree the fatty acid synthesis

Target Details

pathway (By similarity). Binds the sterol regulatory element 1 (SRE-1) (5\\\'-ATCACCCCAC-3\\\'') found in the flanking region of the LDRL and HMG-CoA synthase genes.

Aliases: AI608257 antibody, bHLHd2 antibody, Class D basic helix-loop-helix protein 2 antibody, OTTHUMP00000028740 antibody, Processed sterol regulatory element-binding protein 2 antibody, SRBP2_HUMAN antibody, SREBF 2 antibody, Srebf2 antibody, SREBF2 protein antibody, SREBP 2 antibody, SREBP-2 antibody, SREBP2 antibody, SREBP2gc antibody, sterol regulatory element binding factor 2 antibody, Sterol regulatory element binding protein 2 antibody, Sterol regulatory element binding transcription factor 2 antibody, Sterol regulatory element-binding transcription factor 2 antibody

UniProt: [Q12772](#)

Pathways: [Regulation of Lipid Metabolism by PPARalpha](#)

Application Details

Application Notes: Recommended dilution: IHC:1:20-1:200, IF:1:50-1:200,

Restrictions: For Research Use only

Handling

Format: Liquid

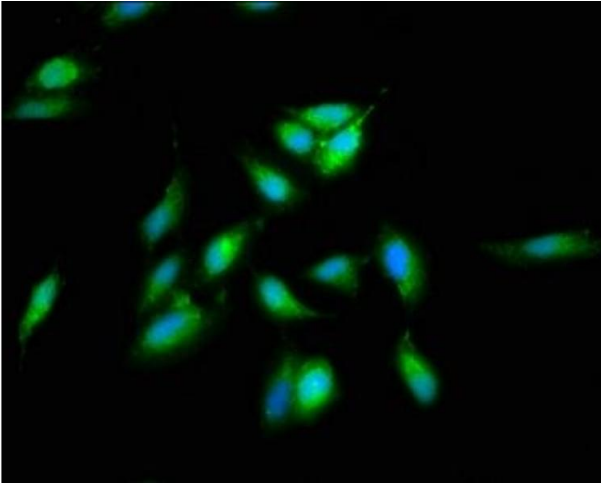
Buffer: Preservative: 0.03 % Proclin 300
Constituents: 50 % Glycerol, 0.01M PBS, pH 7.4

Preservative: ProClin

Precaution of Use: This product contains ProClin: a POISONOUS AND HAZARDOUS SUBSTANCE which should be handled by trained staff only.

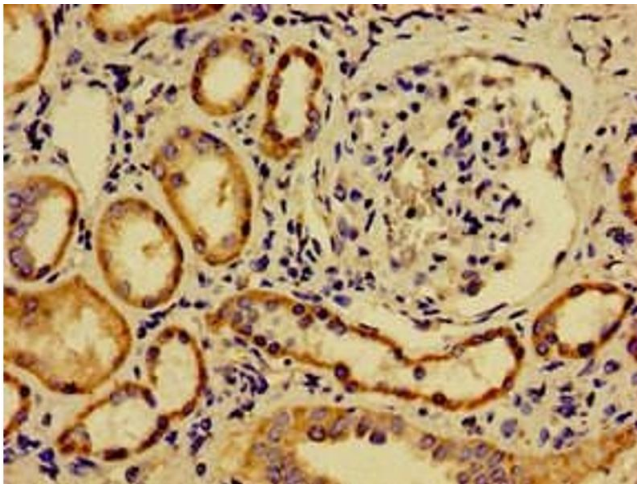
Storage: -20 °C,-80 °C

Storage Comment: Upon receipt, store at -20°C or -80°C. Avoid repeated freeze.



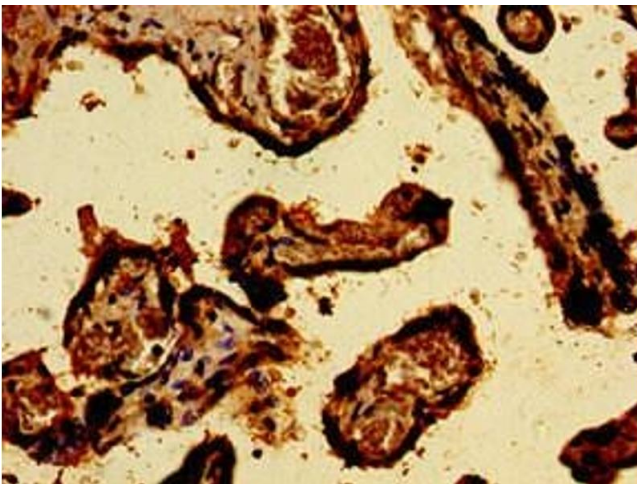
Immunofluorescence

Image 1. Immunofluorescence staining of HeLa cells with ABIN7170782 at 1:66, counter-stained with DAPI. The cells were fixed in 4% formaldehyde, permeabilized using 0.2% Triton X-100 and blocked in 10% normal Goat Serum. The cells were then incubated with the antibody overnight at 4°C. The secondary antibody was Alexa Fluor 488-conjugated AffiniPure Goat Anti-Rabbit IgG(H+L).



Immunohistochemistry

Image 2. Immunohistochemistry of paraffin-embedded human kidney tissue using ABIN7170782 at dilution of 1:100



Immunohistochemistry

Image 3. Immunohistochemistry of paraffin-embedded human placenta tissue using ABIN7170782 at dilution of 1:100