



[Go to Product page](#)

Datasheet for ABIN7170802
anti-STOML2 antibody (AA 29-356)

2 Images

Overview

Quantity:	100 µL
Target:	STOML2
Binding Specificity:	AA 29-356
Reactivity:	Human
Host:	Rabbit
Clonality:	Polyclonal
Conjugate:	This STOML2 antibody is un-conjugated
Application:	Immunohistochemistry (IHC), ELISA

Product Details

Immunogen:	Recombinant Human Stomatin-like protein 2, mitochondrial protein (29-356AA)
Isotype:	IgG
Cross-Reactivity:	Human
Purification:	Antigen Affinity Purified

Target Details

Target:	STOML2
Alternative Name:	STOML2 (STOML2 Products)
Background:	Background: Mitochondrial protein that probably regulates the biogenesis and the activity of mitochondria. Stimulates cardiolipin biosynthesis, binds cardiolipin-enriched membranes where

Target Details

it recruits and stabilizes some proteins including prohibitin and may therefore act in the organization of functional microdomains in mitochondrial membranes. Through regulation of the mitochondrial function may play a role into several biological processes including cell migration, cell proliferation, T-cell activation, calcium homeostasis and cellular response to stress. May play a role in calcium homeostasis through negative regulation of calcium efflux from mitochondria. Required for mitochondrial hyperfusion a pro-survival cellular response to stress which results in increased ATP production by mitochondria. May also regulate the organization of functional domains at the plasma membrane and play a role in T-cell activation through association with the T-cell receptor signaling complex and its regulation.

Aliases: EPB72 like protein 2 antibody, EPB72-like protein 2 antibody, HSPC108 antibody, OTTHUMP00000021320 antibody, Paraprotein target 7 antibody, Paratarg 7 antibody, SLP 2 antibody, SLP-2 antibody, SLP2 antibody, STML2_HUMAN antibody, Stomatin (EPB72) like 2 antibody, Stomatin like 2 antibody, Stomatin like protein 2 antibody, Stomatin like protein 2, mitochondrial antibody, Stomatin-like protein 2 antibody, STOML2 antibody

UniProt: [Q9UJZ1](#)

Pathways: [SARS-CoV-2 Protein Interactome](#), [The Global Phosphorylation Landscape of SARS-CoV-2 Infection](#)

Application Details

Application Notes: Recommended dilution: IHC:1:20-1:200,

Restrictions: For Research Use only

Handling

Format: Liquid

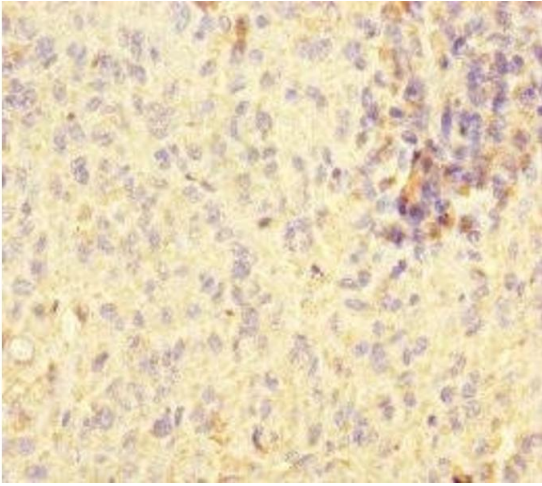
Buffer: PBS with 0.02 % sodium azide, 50 % glycerol, pH 7.3.

Preservative: Sodium azide

Precaution of Use: This product contains Sodium azide: a POISONOUS AND HAZARDOUS SUBSTANCE which should be handled by trained staff only.

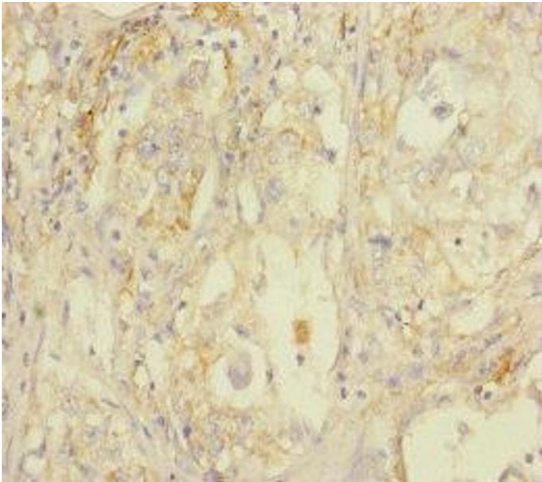
Storage: -20 °C,-80 °C

Storage Comment: Upon receipt, store at -20°C or -80°C. Avoid repeated freeze.



Immunohistochemistry

Image 1. Immunohistochemistry of paraffin-embedded human melanoma using ABIN7170802 at dilution of 1:100



Immunohistochemistry

Image 2. Immunohistochemistry of paraffin-embedded human lung cancer using ABIN7170802 at dilution of 1:100