



[Go to Product page](#)

Datasheet for ABIN7170803
anti-STOML3 antibody (AA 205-291)

4 Images

Overview

Quantity:	100 µg
Target:	STOML3
Binding Specificity:	AA 205-291
Reactivity:	Human
Host:	Rabbit
Clonality:	Polyclonal
Conjugate:	This STOML3 antibody is un-conjugated
Application:	ELISA, Western Blotting (WB), Immunohistochemistry (IHC), Immunofluorescence (IF)

Product Details

Immunogen:	Recombinant Human Stomatin-like protein 3 protein (205-291AA)
Isotype:	IgG
Cross-Reactivity:	Human, Mouse, Rat
Purification:	>95%, Protein G purified

Target Details

Target:	STOML3
Alternative Name:	STOML3 (STOML3 Products)
Background:	Background: Required for the function of many mechanoreceptors. Modulate mechanotransduction channels and acid-sensing ion channels (ASIC) proteins. Potentiates

Target Details

PIEZO1 and PIEZO2 function by increasing their sensitivity to mechanical stimulations.

Aliases: STOML3 antibody, Stomatin-like protein 3 antibody, SLP-3 antibody

UniProt: [Q8TAV4](#)

Application Details

Application Notes: Recommended dilution: WB:1:500-1:5000, IHC:1:20-1:200, IF:1:50-1:200,

Restrictions: For Research Use only

Handling

Format: Liquid

Buffer: Preservative: 0.03 % Proclin 300
Constituents: 50 % Glycerol, 0.01M PBS, pH 7.4

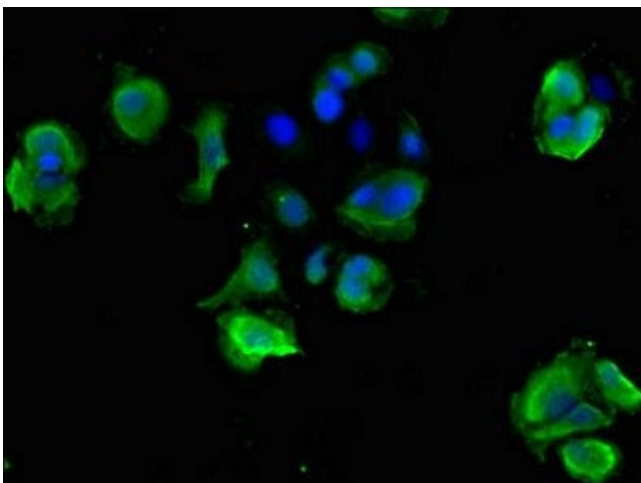
Preservative: ProClin

Precaution of Use: This product contains ProClin: a POISONOUS AND HAZARDOUS SUBSTANCE which should be handled by trained staff only.

Storage: -20 °C,-80 °C

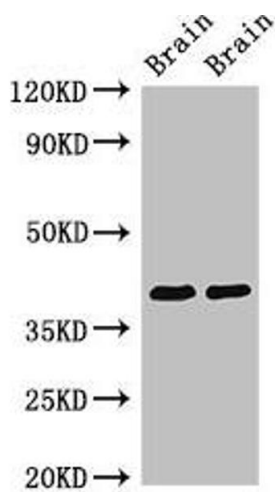
Storage Comment: Upon receipt, store at -20°C or -80°C. Avoid repeated freeze.

Images



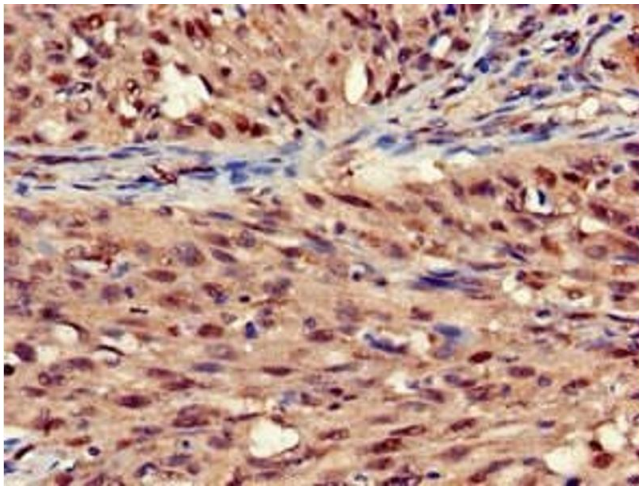
Immunofluorescence

Image 1. Immunofluorescent analysis of MCF-7 cells using ABIN7170803 at dilution of 1:100 and Alexa Fluor 488-conjugated AffiniPure Goat Anti-Rabbit IgG(H+L)



Western Blotting

Image 2. Western Blot Positive WB detected in: Rat brain tissue, Mouse brain tissue All lanes: STOML3 antibody at 3.4 µg/mL Secondary Goat polyclonal to rabbit IgG at 1/50000 dilution Predicted band size: 33, 32 kDa Observed band size: 40 kDa



Immunohistochemistry

Image 3. Immunohistochemistry of paraffin-embedded human lung cancer using ABIN7170803 at dilution of 1:100

Please check the [product details page](#) for more images. Overall 4 images are available for ABIN7170803.