

Datasheet for ABIN7170841
anti-SMAP1 antibody (AA 1-280)



[Go to Product page](#)

2 Images

Overview

Quantity:	100 µg
Target:	SMAP1
Binding Specificity:	AA 1-280
Reactivity:	Human
Host:	Rabbit
Clonality:	Polyclonal
Conjugate:	This SMAP1 antibody is un-conjugated
Application:	ELISA, Immunohistochemistry (IHC)

Product Details

Immunogen:	Recombinant Human Stromal membrane-associated protein 1 protein (1-280AA)
Isotype:	IgG
Cross-Reactivity:	Human
Purification:	>95%, Protein G purified

Target Details

Target:	SMAP1
Alternative Name:	SMAP1 (SMAP1 Products)
Background:	Background: GTPase activating protein that acts on ARF6. Plays a role in clathrin-dependent endocytosis. May play a role in erythropoiesis (By similarity).

Target Details

Aliases: SMAP1 antibody, Stromal membrane-associated protein 1 antibody

UniProt: [Q8IYB5](#)

Application Details

Application Notes: Recommended dilution: IHC:1:20-1:200,

Restrictions: For Research Use only

Handling

Format: Liquid

Buffer: Preservative: 0.03 % Proclin 300
Constituents: 50 % Glycerol, 0.01M PBS, PH 7.4

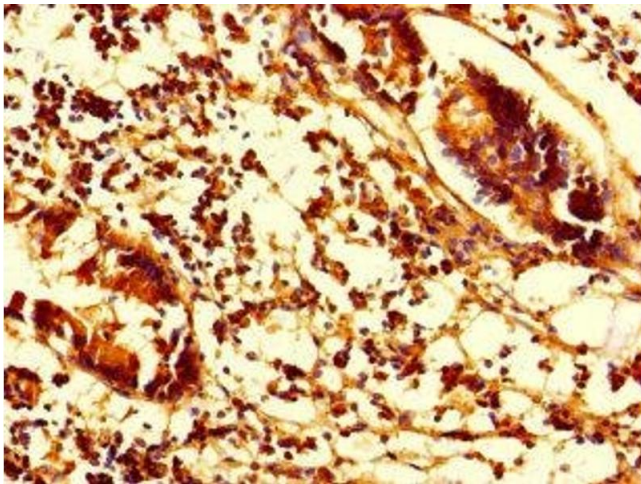
Preservative: ProClin

Precaution of Use: This product contains ProClin: a POISONOUS AND HAZARDOUS SUBSTANCE which should be handled by trained staff only.

Storage: -20 °C,-80 °C

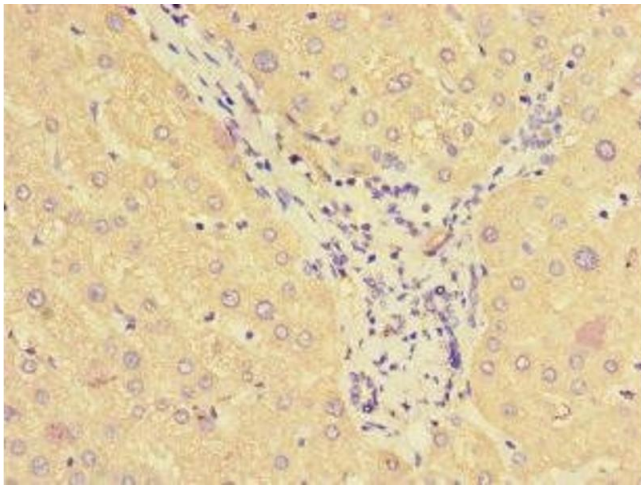
Storage Comment: Upon receipt, store at -20°C or -80°C. Avoid repeated freeze.

Images



Immunohistochemistry

Image 1. Immunohistochemistry of paraffin-embedded human appendix tissue using ABIN7170841 at dilution of 1:100



Immunohistochemistry

Image 2. Immunohistochemistry of paraffin-embedded human liver tissue using ABIN7170841 at dilution of 1:100