

Datasheet for ABIN7170857
anti-SMC1A antibody (AA 1-130)

2 Images

[Go to Product page](#)

Overview

Quantity:	100 µL
Target:	SMC1A
Binding Specificity:	AA 1-130
Reactivity:	Human
Host:	Rabbit
Clonality:	Polyclonal
Conjugate:	This SMC1A antibody is un-conjugated
Application:	Immunohistochemistry (IHC), ELISA

Product Details

Immunogen:	Recombinant Human Structural maintenance of chromosomes protein 1A protein (1-130AA)
Isotype:	IgG
Cross-Reactivity:	Human
Purification:	Antigen Affinity Purified

Target Details

Target:	SMC1A
Alternative Name:	SMC1A (SMC1A Products)
Background:	Background: Involved in chromosome cohesion during cell cycle and in DNA repair. Central component of cohesin complex. The cohesin complex is required for the cohesion of sister

Target Details

chromatids after DNA replication. The cohesin complex apparently forms a large proteinaceous ring within which sister chromatids can be trapped. At anaphase, the complex is cleaved and dissociates from chromatin, allowing sister chromatids to segregate. The cohesin complex may also play a role in spindle pole assembly during mitosis. Involved in DNA repair via its interaction with BRCA1 and its related phosphorylation by ATM, or via its phosphorylation by ATR. Works as a downstream effector both in the ATM/NBS1 branch and in the ATR/MSH2 branch of S-phase checkpoint.

Aliases: Chromosome segregation protein SmcB antibody, DXS423E antibody, KIAA0178 antibody, MGC138332 antibody, Sb1.8 antibody, Segregation of mitotic chromosomes 1 antibody, SMC protein 1A antibody, SMC-1-alpha antibody, SMC-1A antibody, SMC1 (structural maintenance of chromosomes 1 yeast) like 1 antibody, SMC1 antibody, SMC1 structural maintenance of chromosomes 1 like 1 antibody, SMC1A antibody, SMC1A_HUMAN antibody, SMC1alpha antibody, SMC1L1 antibody, SMCB antibody, Structural maintenance of chromosomes 1A antibody, Structural maintenance of chromosomes protein 1A antibody

UniProt: [Q14683](#)

Pathways: [Stem Cell Maintenance](#)

Application Details

Application Notes: Recommended dilution: IHC:1:20-1:200,

Restrictions: For Research Use only

Handling

Format: Liquid

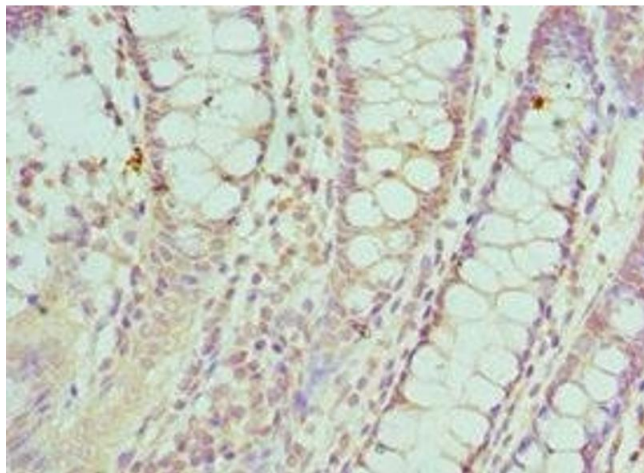
Buffer: PBS with 0.02 % sodium azide, 50 % glycerol, pH 7.3.

Preservative: Sodium azide

Precaution of Use: This product contains Sodium azide: a POISONOUS AND HAZARDOUS SUBSTANCE which should be handled by trained staff only.

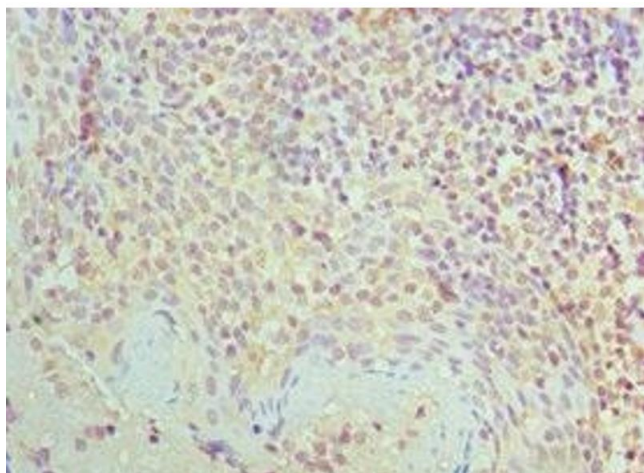
Storage: -20 °C,-80 °C

Storage Comment: Upon receipt, store at -20°C or -80°C. Avoid repeated freeze.



Immunohistochemistry

Image 1. Immunohistochemistry of paraffin-embedded human colon cancer using ABIN7170857 at dilution of 1:100



Immunohistochemistry

Image 2. Immunohistochemistry of paraffin-embedded human tonsil tissue using ABIN7170857 at dilution of 1:100