

Datasheet for ABIN7170866
anti-SMC4 antibody (AA 406-501)

3 Images

[Go to Product page](#)

Overview

Quantity:	100 µg
Target:	SMC4
Binding Specificity:	AA 406-501
Reactivity:	Human
Host:	Rabbit
Clonality:	Polyclonal
Conjugate:	This SMC4 antibody is un-conjugated
Application:	ELISA, Immunohistochemistry (IHC), Immunofluorescence (IF)

Product Details

Immunogen:	Recombinant Human Structural maintenance of chromosomes protein 4 protein (406-501AA)
Isotype:	IgG
Cross-Reactivity:	Human
Purification:	>95%, Protein G purified

Target Details

Target:	SMC4
Alternative Name:	SMC4 (SMC4 Products)
Background:	Background: Central component of the condensin complex, a complex required for conversion of interphase chromatin into mitotic-like condense chromosomes. The condensin complex

Target Details

probably introduces positive supercoils into relaxed DNA in the presence of type I topoisomerases and converts nicked DNA into positive knotted forms in the presence of type II topoisomerases.

Aliases: CAP C antibody, CAPC antibody, Chromosome associated polypeptide C antibody, Chromosome-associated polypeptide C antibody, hCAP C antibody, hCAP-C antibody, SMC 4 antibody, SMC protein 4 antibody, SMC-4 antibody, SMC4 antibody, SMC4_HUMAN antibody, SMC4L1 antibody, Structural maintenance of chromosomes 4 antibody, Structural maintenance of chromosomes 4 like 1 antibody, Structural maintenance of chromosomes protein 4 antibody, XCAP C homolog antibody, XCAP-C homolog antibody

UniProt: [Q9NTJ3](#)

Application Details

Application Notes: Recommended dilution: IHC:1:20-1:200, IF:1:50-1:200,

Restrictions: For Research Use only

Handling

Format: Liquid

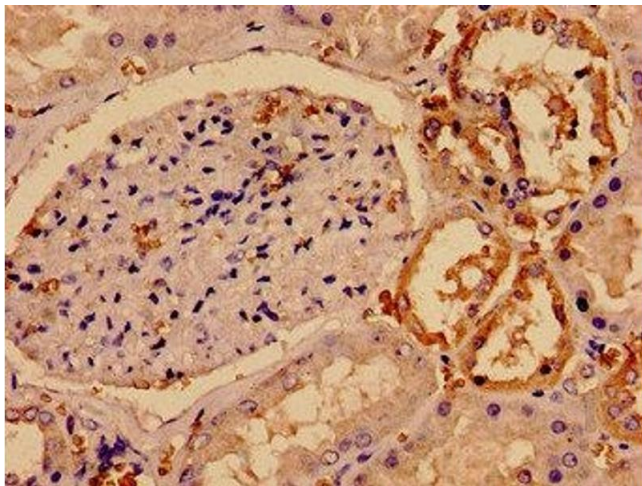
Buffer: Preservative: 0.03 % Proclin 300
Constituents: 50 % Glycerol, 0.01M PBS, pH 7.4

Preservative: ProClin

Precaution of Use: This product contains ProClin: a POISONOUS AND HAZARDOUS SUBSTANCE which should be handled by trained staff only.

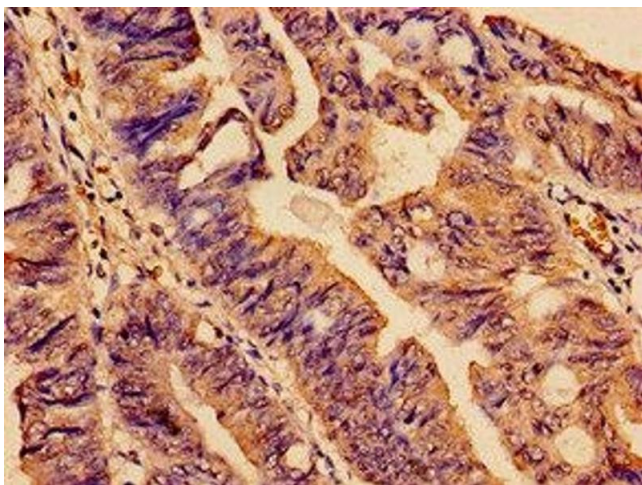
Storage: -20 °C,-80 °C

Storage Comment: Upon receipt, store at -20°C or -80°C. Avoid repeated freeze.



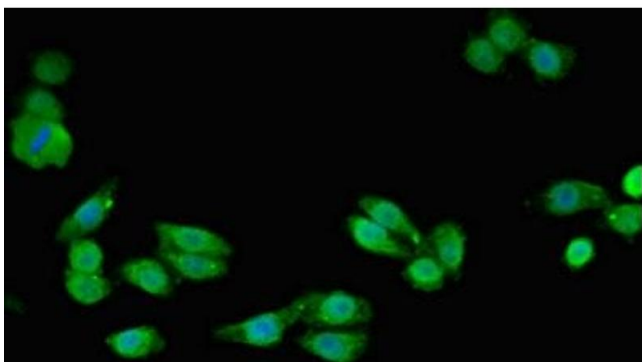
Immunocytochemistry

Image 1. Immunocytochemistry analysis of human kidney tissue using ABIN7170866 at dilution of 1:100



Immunohistochemistry

Image 2. Immunohistochemistry analysis of human colon cancer using ABIN7170866 at dilution of 1:100



Immunofluorescence

Image 3. Immunofluorescent analysis of HepG2 cells using ABIN7170866 at dilution of 1:100 and Alexa Fluor 488-conjugated AffiniPure Goat Anti-Rabbit IgG(H+L)