

Datasheet for ABIN7170886
anti-SDHA antibody (AA 44-664)[Go to Product page](#)

2 Images

Overview

Quantity:	100 µg
Target:	SDHA
Binding Specificity:	AA 44-664
Reactivity:	Human
Host:	Rabbit
Clonality:	Polyclonal
Conjugate:	This SDHA antibody is un-conjugated
Application:	Western Blotting (WB), ELISA, Immunohistochemistry (IHC)

Product Details

Immunogen:	Recombinant Human Succinate dehydrogenase [ubiquinone] flavoprotein subunit, mitochondrial protein (44-664AA)
Isotype:	IgG
Cross-Reactivity:	Human, Mouse, Rat, Zebrafish (Danio rerio)
Purification:	>95%, Protein G purified

Target Details

Target:	SDHA
Alternative Name:	SDHA (SDHA Products)
Background:	Background: Flavoprotein (FP) subunit of succinate dehydrogenase (SDH) that is involved in

Target Details

complex II of the mitochondrial electron transport chain and is responsible for transferring electrons from succinate to ubiquinone (coenzyme Q). Can act as a tumor suppressor.

Aliases: CMD1GG antibody, DHSA_HUMAN antibody, Flavoprotein subunit of complex II antibody, Fp antibody, PGL5 antibody, SDH 2 antibody, SDH1 antibody, SDH2 antibody, SDHA antibody, SDHF antibody, Succinate dehydrogenase [ubiquinone] flavoprotein subunit antibody, Succinate dehydrogenase [ubiquinone] flavoprotein subunit mitochondrial antibody, Succinate dehydrogenase [ubiquinone] flavoprotein subunit, mitochondrial antibody, Succinate dehydrogenase complex flavoprotein subunit A antibody, Succinate dehydrogenase complex flavoprotein subunit antibody, Succinate dehydrogenase complex flavoprotein subunit precursor antibody, Succinate dehydrogenase complex subunit A antibody, Succinate dehydrogenase complex subunit A flavoprotein (Fp) antibody, Succinate dehydrogenase complex subunit A flavoprotein antibody

UniProt: [P31040](#)

Application Details

Application Notes: Recommended dilution: WB:1:500-1:2000, IHC:1:20-1:200,

Restrictions: For Research Use only

Handling

Format: Liquid

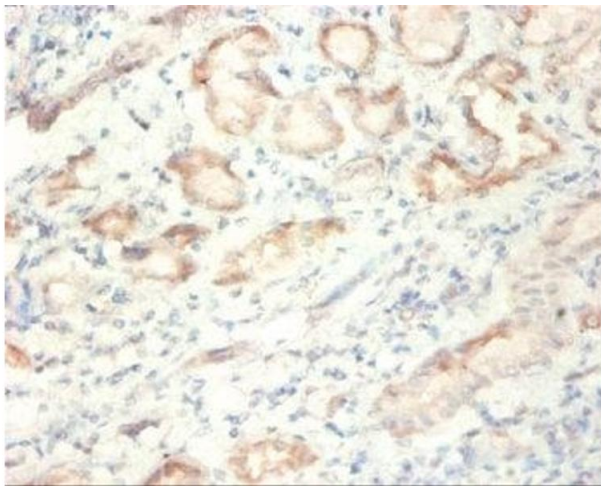
Buffer: Preservative: 0.03 % Proclin 300
Constituents: 50 % Glycerol, 0.01M PBS, PH 7.4

Preservative: ProClin

Precaution of Use: This product contains ProClin: a POISONOUS AND HAZARDOUS SUBSTANCE which should be handled by trained staff only.

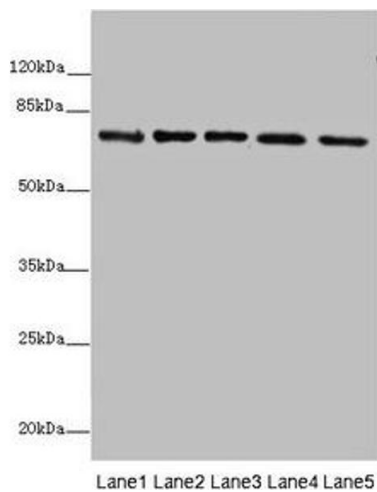
Storage: -20 °C,-80 °C

Storage Comment: Upon receipt, store at -20°C or -80°C. Avoid repeated freeze.



Immunohistochemistry

Image 1. Immunohistochemistry of paraffin-embedded human kidney tissue using ABIN7170886 at dilution of 1:50



Western Blotting

Image 2. Western blot All lanes: SDHA antibody at 10 µg/mL
Lane 1: Rat heart tissue Lane 2: Mouse spleen tissue Lane 3: Mouse liver tissue Lane 4: Hela whole cell lysate Lane 5: Zebrafish lysate Secondary Goat polyclonal to rabbit IgG at 1/10000 dilution Predicted band size: 73, 68, 57 kDa
Observed band size: 73 kDa