

Datasheet for ABIN7170890
anti-SDHB antibody (AA 29-280)



[Go to Product page](#)

1 Image

Overview

Quantity:	100 µL
Target:	SDHB
Binding Specificity:	AA 29-280
Reactivity:	Human
Host:	Rabbit
Clonality:	Polyclonal
Conjugate:	This SDHB antibody is un-conjugated
Application:	ELISA, Immunohistochemistry (IHC)

Product Details

Immunogen:	Recombinant Human Succinate dehydrogenase [ubiquinone] iron-sulfur subunit, mitochondrial protein (29-280AA)
Isotype:	IgG
Cross-Reactivity:	Human
Purification:	>95%, Protein G purified

Target Details

Target:	SDHB
Alternative Name:	SDHB (SDHB Products)
Background:	Background: Iron-sulfur protein (IP) subunit of succinate dehydrogenase (SDH) that is involved

Target Details

in complex II of the mitochondrial electron transport chain and is responsible for transferring electrons from succinate to ubiquinone (coenzyme Q).

Aliases: CWS2 antibody, DH5B_HUMAN antibody, FLJ92337 antibody, Ip antibody, Iron sulfur subunit antibody, Iron sulfur subunit of complex II antibody, Iron-sulfur subunit of complex II antibody, mitochondrial antibody, PGL 4 antibody, PGL4 antibody, SDH 1 antibody, SDH antibody, SDH1 antibody, SDH2 antibody, SDH2, homolog of antibody, SdhB antibody, SDHIP antibody, Succinate dehydrogenase [ubiquinone] iron sulfur protein mitochondrial antibody, Succinate dehydrogenase [ubiquinone] iron sulfur subunit antibody, Succinate dehydrogenase [ubiquinone] iron-sulfur subunit antibody, succinate dehydrogenase [ubiquinone] iron-sulfur subunit, mitochondrial antibody, Succinate Dehydrogenase 1 Iron Sulfur Subunit antibody, Succinate Dehydrogenase 2, S. cerevisiae, homolog of antibody, Succinate dehydrogenase complex iron sulfur subunit B antibody, Succinate dehydrogenase complex subunit B iron sulfur antibody, Succinate Dehydrogenase Complex Subunit B Iron Sulfur Protein antibody, succinate dehydrogenase complex, subunit B, iron sulfur (Ip) antibody, Succinate dehydrogenase iron sulfur protein antibody

UniProt: [P21912](#)

Application Details

Application Notes: Recommended dilution: IHC:1:200-1:500,

Restrictions: For Research Use only

Handling

Format: Liquid

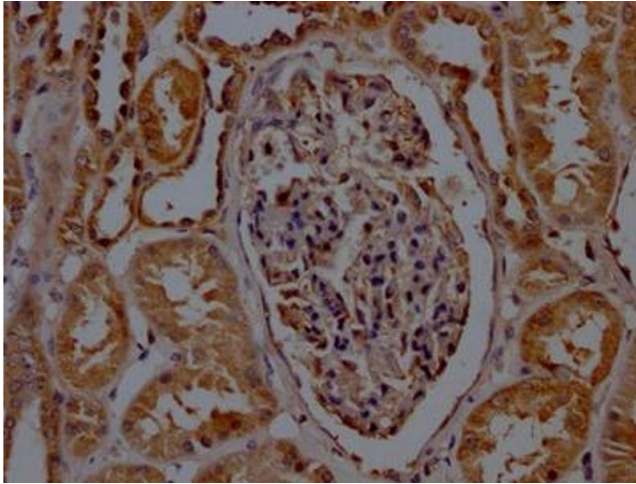
Buffer: Preservative: 0.03 % Proclin 300
Constituents: 50 % Glycerol, 0.01M PBS, PH 7.4

Preservative: ProClin

Precaution of Use: This product contains ProClin: a POISONOUS AND HAZARDOUS SUBSTANCE which should be handled by trained staff only.

Storage: -20 °C,-80 °C

Storage Comment: Upon receipt, store at -20°C or -80°C. Avoid repeated freeze.



Immunohistochemistry

Image 1. IHC image of ABIN7170890 diluted at 1:200 and staining in paraffin-embedded human kidney tissue performed on a Leica Bond™ system. After dewaxing and hydration, antigen retrieval was mediated by high pressure in a citrate buffer (pH 6.0). Section was blocked with 10 % normal goat serum 30 min at RT. Then primary antibody (1 % BSA) was incubated at 4 °C overnight. The primary is detected by a Goat anti-rabbit polymer IgG labeled by HRP and visualized using 0.05 % DAB.