

Datasheet for ABIN7170894
anti-SDHAF1 antibody (AA 78-115)

2 Images

[Go to Product page](#)

Overview

Quantity:	100 µg
Target:	SDHAF1
Binding Specificity:	AA 78-115
Reactivity:	Human
Host:	Rabbit
Clonality:	Polyclonal
Conjugate:	This SDHAF1 antibody is un-conjugated
Application:	ELISA, Immunohistochemistry (IHC)

Product Details

Immunogen:	Recombinant Human Succinate dehydrogenase assembly factor 1, mitochondrial protein (78-115AA)
Isotype:	IgG
Cross-Reactivity:	Human
Purification:	>95%, Protein G purified

Target Details

Target:	SDHAF1
Alternative Name:	SDHAF1 (SDHAF1 Products)
Background:	Background: Plays an essential role in the assembly of succinate dehydrogenase (SDH), an

Target Details

enzyme complex (also referred to as respiratory complex II) that is a component of both the tricarboxylic acid (TCA) cycle and the mitochondrial electron transport chain, and which couples the oxidation of succinate to fumarate with the reduction of ubiquinone (coenzyme Q) to ubiquinol. Promotes maturation of the iron-sulfur protein subunit SDHB of the SDH catalytic dimer, protecting it from the deleterious effects of oxidants. May act together with SDHAF3. Aliases: LYR motif containing 8 antibody, LYR motif-containing protein 8 antibody, LYRM8 antibody, mitochondrial antibody, SDH assembly factor 1 antibody, SDHAF1 antibody, SDHF1_HUMAN antibody, Succinate dehydrogenase assembly factor 1 antibody, Succinate dehydrogenase assembly factor 1 mitochondrial antibody, Succinate dehydrogenase complex assembly factor 1 antibody

UniProt: [A6NFY7](#)

Application Details

Application Notes: Recommended dilution: IHC:1:20-1:200,

Restrictions: For Research Use only

Handling

Format: Liquid

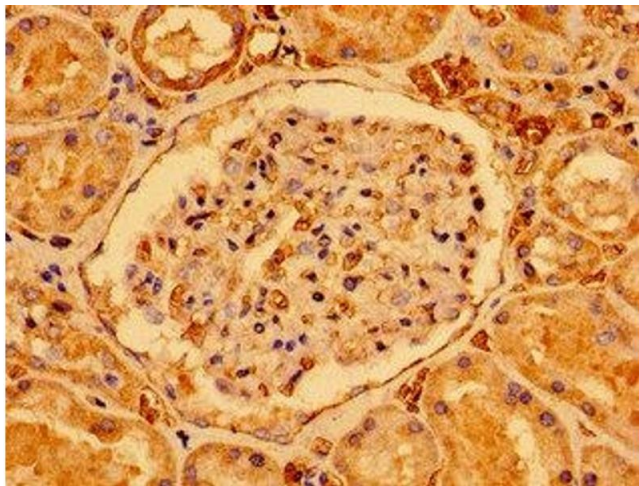
Buffer: Preservative: 0.03 % Proclin 300
Constituents: 50 % Glycerol, 0.01M PBS, pH 7.4

Preservative: ProClin

Precaution of Use: This product contains ProClin: a POISONOUS AND HAZARDOUS SUBSTANCE which should be handled by trained staff only.

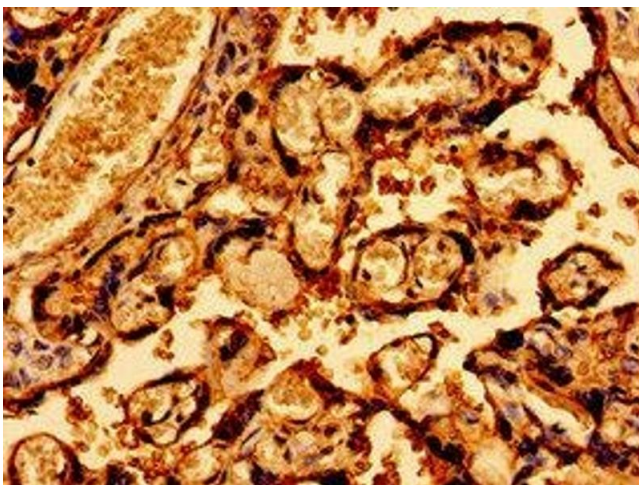
Storage: -20 °C,-80 °C

Storage Comment: Upon receipt, store at -20°C or -80°C. Avoid repeated freeze.



Immunohistochemistry

Image 1. Immunohistochemistry of paraffin-embedded human kidney tissue using ABIN7170894 at dilution of 1:100



Immunohistochemistry

Image 2. Immunohistochemistry of paraffin-embedded human placenta tissue using ABIN7170894 at dilution of 1:100