

Datasheet for ABIN7170953
anti-SULT1A3 antibody (AA 1-295)[Go to Product page](#)

3 Images

Overview

Quantity:	100 µg
Target:	SULT1A3
Binding Specificity:	AA 1-295
Reactivity:	Human
Host:	Rabbit
Clonality:	Polyclonal
Conjugate:	This SULT1A3 antibody is un-conjugated
Application:	Western Blotting (WB), ELISA, Immunohistochemistry (IHC), Immunofluorescence (IF)

Product Details

Immunogen:	Recombinant Human Sulfotransferase 1A3 protein (1-295AA)
Isotype:	IgG
Cross-Reactivity:	Human, Mouse
Purification:	>95%, Protein G purified

Target Details

Target:	SULT1A3
Alternative Name:	SULT1A3 (SULT1A3 Products)
Background:	Background: Sulfotransferase that utilizes 3\\\'-phospho-5\\\'-adenylyl sulfate (PAPS) as sulfonate donor to catalyze the sulfate conjugation of phenolic monoamines

Target Details

(neurotransmitters such as dopamine, norepinephrine and serotonin) and phenolic and catechol drugs.

Aliases: SULT1A3 antibody, STM antibody, Sulfotransferase 1A3 antibody, ST1A3 antibody, EC 2.8.2.1 antibody, Aryl sulfotransferase 1A3/1A4 antibody, Catecholamine-sulfating phenol sulfotransferase antibody, HAST3 antibody, M-PST antibody, Monoamine-sulfating phenol sulfotransferase antibody, Placental estrogen sulfotransferase antibody, Sulfotransferase 1A3/1A4 antibody, Sulfotransferase antibody, monoamine-preferring antibody, Thermolabile phenol sulfotransferase antibody, TL-PST antibody

UniProt: [P0DMM9](#)

Pathways: [ER-Nucleus Signaling](#)

Application Details

Application Notes: Recommended dilution: WB:1:1000-1:5000, IHC:1:500-1:1000, IF:1:50-1:200,

Restrictions: For Research Use only

Handling

Format: Liquid

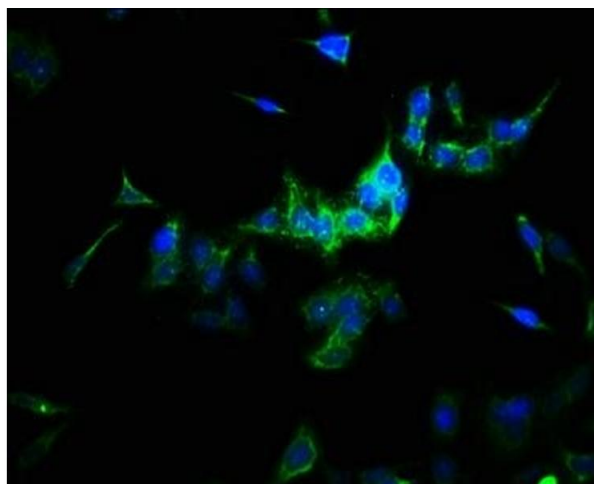
Buffer: Preservative: 0.03 % Proclin 300
Constituents: 50 % Glycerol, 0.01M PBS, PH 7.4

Preservative: ProClin

Precaution of Use: This product contains ProClin: a POISONOUS AND HAZARDOUS SUBSTANCE which should be handled by trained staff only.

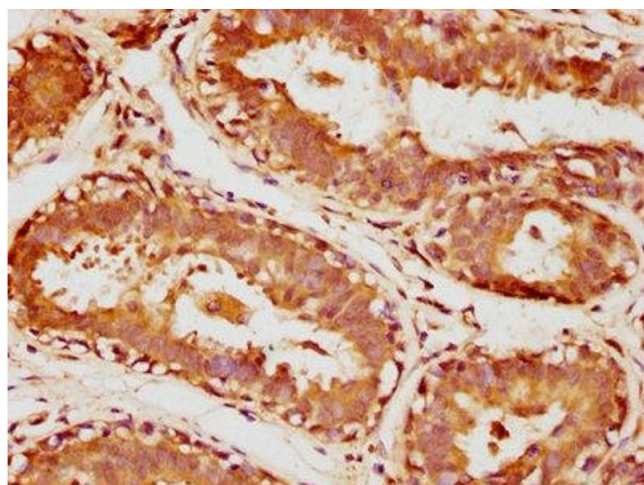
Storage: -20 °C, -80 °C

Storage Comment: Upon receipt, store at -20°C or -80°C. Avoid repeated freeze.



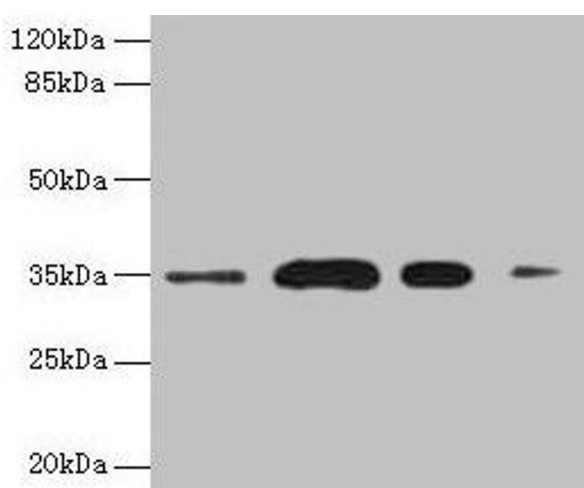
Immunofluorescence

Image 1. Immunofluorescence staining of HepG2 cells with ABIN7170953 at 1:166, counter-stained with DAPI. The cells were fixed in 4% formaldehyde, permeabilized using 0.2% Triton X-100 and blocked in 10% normal Goat Serum. The cells were then incubated with the antibody overnight at 4°C. The secondary antibody was Alexa Fluor 488-conjugated AffiniPure Goat Anti-Rabbit IgG(H+L).



Immunohistochemistry

Image 2. IHC image of ABIN7170953 diluted at 1:1000 and staining in paraffin-embedded human breast cancer performed on a Leica Bond™ system. After dewaxing and hydration, antigen retrieval was mediated by high pressure in a citrate buffer (pH 6.0). Section was blocked with 10% normal goat serum 30 min at RT. Then primary antibody (1% BSA) was incubated at 4°C overnight. The primary antibody was detected by a biotinylated secondary antibody and visualized using an HRP-conjugated SP system.



Western Blotting

Image 3. Western blot All lanes: SULT1A3 antibody at 20 µg/mL Lane 1: A549 whole cell lysate Lane 2: Colo320 whole cell lysate Lane 3: Mouse brain tissue Lane 4: Mouse kidney tissue Secondary Goat polyclonal to rabbit IgG at 1/10000 dilution Predicted band size: 35, 23 kDa Observed band size: 35 kDa