

Datasheet for ABIN7170979  
**anti-SOD1 antibody (AA 2-154)**



[Go to Product page](#)

3 Images

## Overview

Quantity:	100 µg
Target:	SOD1
Binding Specificity:	AA 2-154
Reactivity:	Human
Host:	Rabbit
Clonality:	Polyclonal
Conjugate:	This SOD1 antibody is un-conjugated
Application:	Western Blotting (WB), ELISA, Immunohistochemistry (IHC), Immunofluorescence (IF)

## Product Details

Immunogen:	Recombinant Human Superoxide dismutase [Cu-Zn] protein (2-154AA)
Isotype:	IgG
Cross-Reactivity:	Human, Mouse
Purification:	>95%, Protein G purified

## Target Details

Target:	SOD1
Alternative Name:	SOD1 ( <a href="#">SOD1 Products</a> )
Background:	Background: Destroys radicals which are normally produced within the cells and which are toxic to biological systems.

## Target Details

Aliases: ALS antibody, ALS1 antibody, Amyotrophic lateral sclerosis 1 adult antibody, Cu/Zn SOD antibody, Cu/Zn superoxide dismutase antibody, Epididymis secretory protein Li 44 antibody, HEL S 44 antibody, Homodimer antibody, hSod1 antibody, Indophenoloxidase A antibody, IPOA antibody, Mn superoxide dismutase antibody, SOD antibody, SOD soluble antibody, SOD1 antibody, SOD2 antibody, SODC antibody, SODC\_HUMAN antibody, Superoxide dismutase [Cu-Zn] antibody, Superoxide dismutase 1 antibody, Superoxide dismutase 1 soluble antibody, Superoxide dismutase Cu Zn antibody, Superoxide dismutase cystolic antibody

UniProt: [P00441](#)

Pathways: [Sensory Perception of Sound](#), [Transition Metal Ion Homeostasis](#)

## Application Details

Application Notes: Recommended dilution: WB:1:1000-1:5000, IHC:1:20-1:200, IF:1:50-1:200,

Restrictions: For Research Use only

## Handling

Format: Liquid

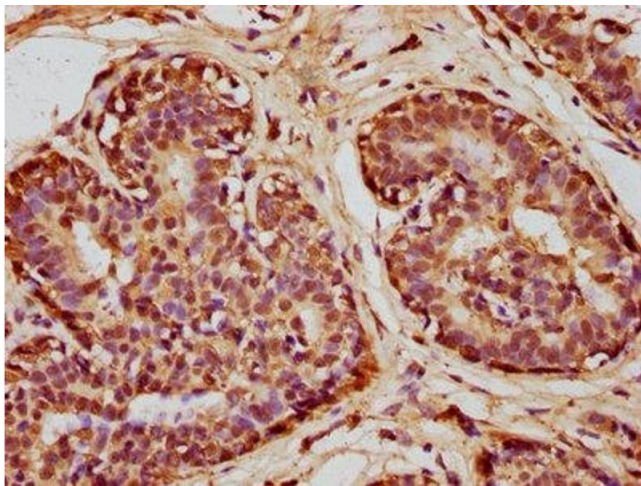
Buffer: Preservative: 0.03 % Proclin 300  
Constituents: 50 % Glycerol, 0.01M PBS, PH 7.4

Preservative: ProClin

Precaution of Use: This product contains ProClin: a POISONOUS AND HAZARDOUS SUBSTANCE which should be handled by trained staff only.

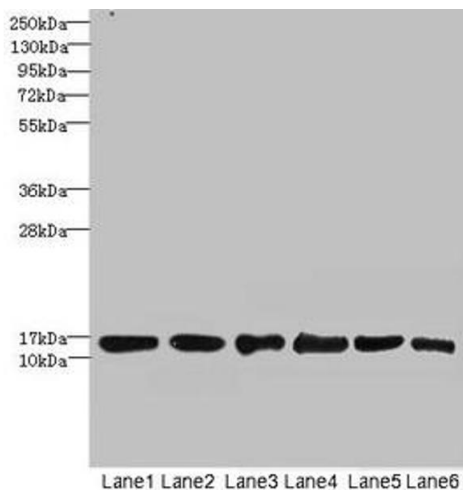
Storage: -20 °C,-80 °C

Storage Comment: Upon receipt, store at -20°C or -80°C. Avoid repeated freeze.



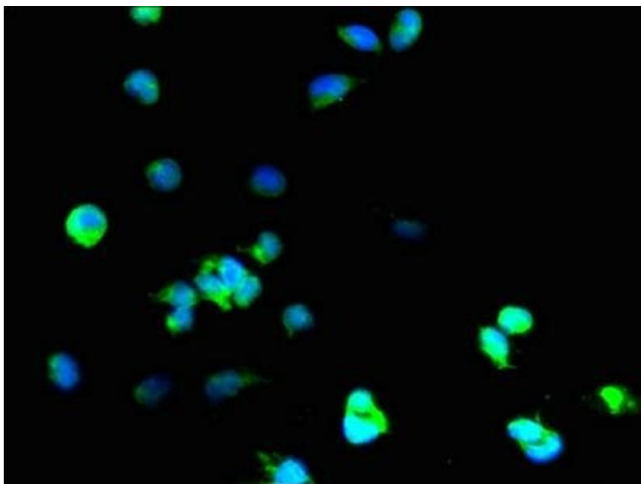
### Immunohistochemistry

**Image 1.** IHC image of ABIN7170979 diluted at 1:100 and staining in paraffin-embedded human breast cancer performed on a Leica Bond™ system. After dewaxing and hydration, antigen retrieval was mediated by high pressure in a citrate buffer (pH 6.0). Section was blocked with 10% normal goat serum 30min at RT. Then primary antibody (1% BSA) was incubated at 4°C overnight. The primary is detected by a biotinylated secondary antibody and visualized using an HRP conjugated SP system.



### Western Blotting

**Image 2.** Western blot All lanes: SOD1 antibody at 6 µg/mL  
Lane 1: Mouse liver tissue Lane 2: Mouse brain tissue Lane 3: Hela whole cell lysate Lane 4: MCF-7 whole cell lysate Lane 5: A549 whole cell lysate Lane 6: HepG2 whole cell lysate Secondary Goat polyclonal to rabbit IgG at 1/10000 dilution Predicted band size: 16 kDa Observed band size: 16 kDa



### Immunofluorescence

**Image 3.** Immunofluorescent analysis of 293T cells using ABIN7170979 at dilution of 1:100 and Alexa Fluor 488-conjugated AffiniPure Goat Anti-Rabbit IgG(H+L)