



[Go to Product page](#)

Datasheet for ABIN7171013  
**anti-SUFUH antibody (AA 325-484)**

3 Images

### Overview

Quantity:	100 µL
Target:	SUFUH
Binding Specificity:	AA 325-484
Reactivity:	Human
Host:	Rabbit
Clonality:	Polyclonal
Conjugate:	This SUFUH antibody is un-conjugated
Application:	Western Blotting (WB), Immunohistochemistry (IHC), ELISA

### Product Details

Immunogen:	Recombinant Human Suppressor of fused homolog protein (325-484AA)
Isotype:	IgG
Cross-Reactivity:	Human, Mouse
Purification:	Antigen Affinity Purified

### Target Details

Target:	SUFUH
Alternative Name:	SUFU ( <a href="#">SUFUH Products</a> )
Background:	Background: Negative regulator in the hedgehog signaling pathway. Down-regulates GLI1-mediated transactivation of target genes. Part of a corepressor complex that acts on DNA-

## Target Details

---

bound GLI1. May also act by linking GLI1 to BTRC and thereby targeting GLI1 to degradation by the proteasome. Sequesters GLI1, GLI2 and GLI3 in the cytoplasm, this effect is overcome by binding of STK36 to both SUFU and a GLI protein. Negative regulator of beta-catenin signaling. Regulates the formation of either the repressor form (GLI3R) or the activator form (GLI3A) of the full length form of GLI3 (GLI3FL). GLI3FL is complexed with SUFU in the cytoplasm and is maintained in a neutral state. Without the Hh signal, the SUFU-GLI3 complex is recruited to cilia, leading to the efficient processing of GLI3FL into GLI3R. When Hh signaling is initiated, SUFU dissociates from GLI3FL and the latter translocates to the nucleus, where it is phosphorylated, destabilized, and converted to a transcriptional activator (GLI3A). Required for the proper formation of hair follicles and the control of epidermal differentiation.

Aliases: OTTHUMP00000020374 antibody, OTTHUMP00000020377 antibody, OTTHUMP00000020379 antibody, PRO1280 antibody, SU FU antibody, SU(F)U antibody, Su(fu) antibody, SUFU antibody, SUFU negative regulator of hedgehog signaling antibody, SUFU\_HUMAN antibody, SUFUH antibody, SUFUXL antibody, Suppressor of Fused antibody, Suppressor of fused homolog (Drosophila) antibody, Suppressor of fused homolog antibody

---

UniProt: [Q9UMX1](#)

---

Pathways: [Hedgehog Signaling](#), [Tube Formation](#), [Maintenance of Protein Location](#)

## Application Details

---

Application Notes: Recommended dilution: WB:1:500-1:2000, IHC:1:20-1:200,

---

Restrictions: For Research Use only

## Handling

---

Format: Liquid

---

Buffer: PBS with 0.02 % sodium azide, 50 % glycerol, pH 7.3.

---

Preservative: Sodium azide

---

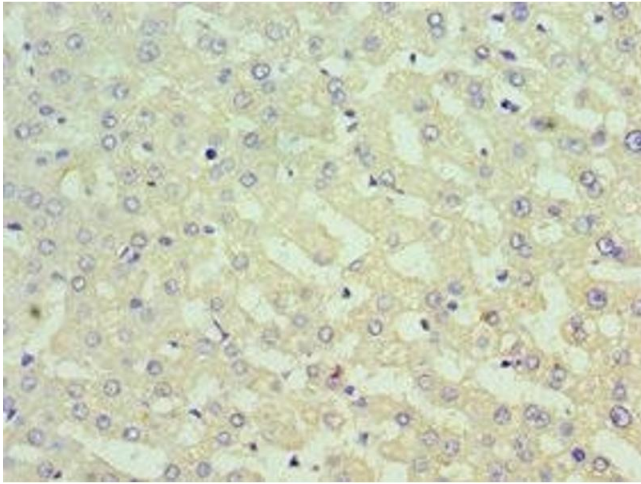
Precaution of Use: This product contains Sodium azide: a POISONOUS AND HAZARDOUS SUBSTANCE which should be handled by trained staff only.

---

Storage: -20 °C,-80 °C

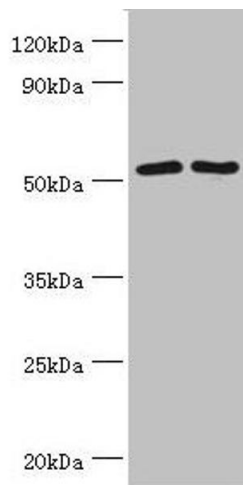
---

Storage Comment: Upon receipt, store at -20°C or -80°C. Avoid repeated freeze.



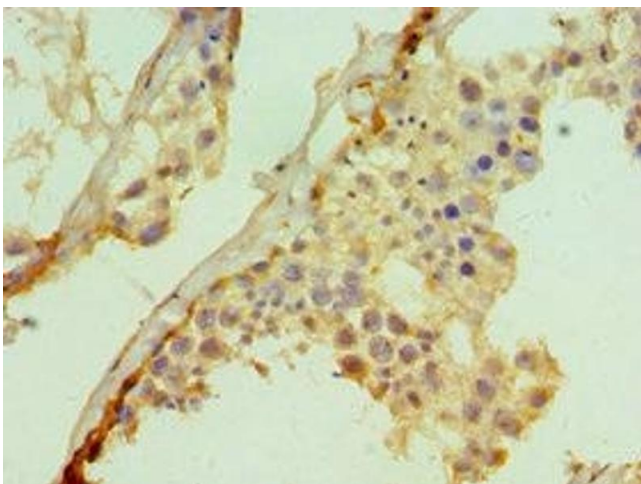
### Immunohistochemistry

**Image 1.** Immunohistochemistry of paraffin-embedded human liver tissue using ABIN7171013 at dilution of 1:100



### Western Blotting

**Image 2.** Western blot All lanes: Suppressor of fused homolog antibody at 4 µg/mL Lane 1: HepG2 whole cell lysate Lane 2: Hela whole cell lysate Lane 3: Mouse kidney tissue Secondary Goat polyclonal to rabbit IgG at 1/10000 dilution Predicted band size: 54, 48, 53 kDa Observed band size: 54 kDa



### Immunohistochemistry

**Image 3.** Immunohistochemistry of paraffin-embedded human testis tissue using ABIN7171013 at dilution of 1:100