



[Go to Product page](#)

Datasheet for ABIN7171032  
**anti-SUSD4 antibody (AA 56-290)**

1 Image

### Overview

Quantity:	100 µg
Target:	SUSD4
Binding Specificity:	AA 56-290
Reactivity:	Human
Host:	Rabbit
Clonality:	Polyclonal
Conjugate:	This SUSD4 antibody is un-conjugated
Application:	ELISA, Immunohistochemistry (IHC)

### Product Details

Immunogen:	Recombinant Human Sushi domain-containing protein 4 protein (56-290AA)
Isotype:	IgG
Cross-Reactivity:	Human
Purification:	>95%, Protein G purified

### Target Details

Target:	SUSD4
Alternative Name:	SUSD4 ( <a href="#">SUSD4 Products</a> )
Background:	Background: Acts as complement inhibitor by disrupting the formation of the classical C3 convertase. Isoform 3 inhibits the classical complement pathway, while membrane-bound

## Target Details

isoform 1 inhibits deposition of C3b via both the classical and alternative complement pathways.

Aliases: SUS4 antibody, UNQ196/PRO222 antibody, Sushi domain-containing protein 4 antibody

UniProt: [Q5VX71](#)

## Application Details

Application Notes: Recommended dilution: IHC:1:20-1:200,

Restrictions: For Research Use only

## Handling

Format: Liquid

Buffer: Preservative: 0.03 % Proclin 300  
Constituents: 50 % Glycerol, 0.01M PBS, PH 7.4

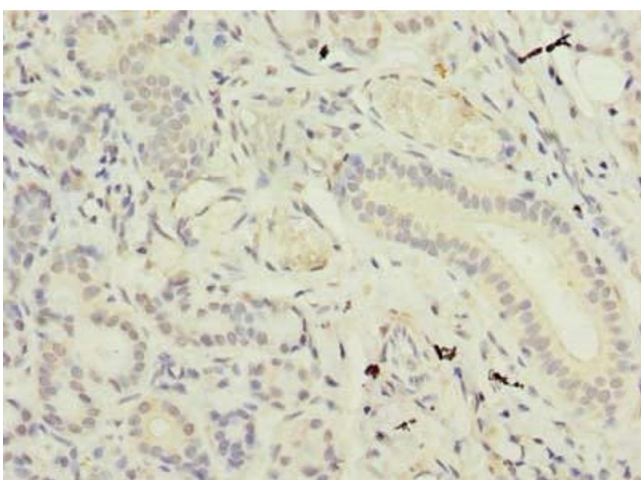
Preservative: ProClin

Precaution of Use: This product contains ProClin: a POISONOUS AND HAZARDOUS SUBSTANCE which should be handled by trained staff only.

Storage: -20 °C,-80 °C

Storage Comment: Upon receipt, store at -20°C or -80°C. Avoid repeated freeze.

## Images



### Immunohistochemistry

**Image 1.** Immunohistochemistry of paraffin-embedded human pancreatic tissue using ABIN7171032 at dilution of 1:100