

Datasheet for ABIN7171044  
**anti-SRPX antibody (AA 31-237)**[Go to Product page](#)

## 2 Images

## Overview

Quantity:	100 µL
Target:	SRPX
Binding Specificity:	AA 31-237
Reactivity:	Human
Host:	Rabbit
Clonality:	Polyclonal
Conjugate:	This SRPX antibody is un-conjugated
Application:	Western Blotting (WB), ELISA, Immunohistochemistry (IHC)

## Product Details

Immunogen:	Recombinant Human Sushi repeat-containing protein SRPX protein (31-237AA)
Isotype:	IgG
Cross-Reactivity:	Human
Purification:	>95%, Protein G purified

## Target Details

Target:	SRPX
Alternative Name:	SRPX ( <a href="#">SRPX Products</a> )
Background:	Background: May be involved in phagocytosis during disk shedding, cell adhesion to cells other than the pigment epithelium or signal transduction.

## Target Details

Aliases: SRPX antibody, ETX1 antibody, Sushi repeat-containing protein SRPX antibody

UniProt: [P78539](#)

## Application Details

Application Notes: Recommended dilution: WB:1:1000-1:5000, IHC:1:500-1:1000,

Restrictions: For Research Use only

## Handling

Format: Liquid

Buffer: Preservative: 0.03 % Proclin 300  
Constituents: 50 % Glycerol, 0.01M PBS, pH 7.4

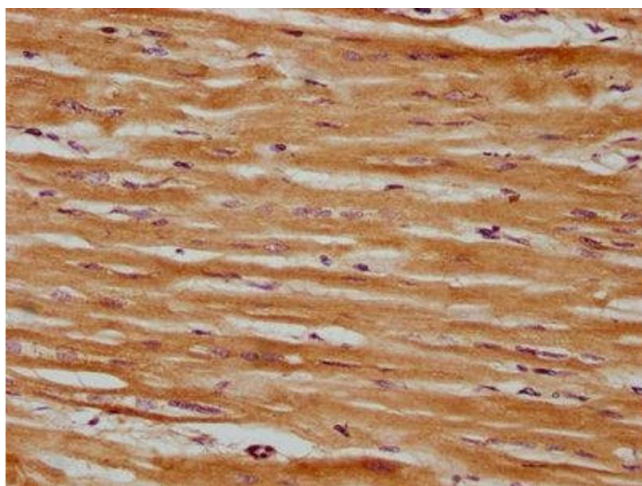
Preservative: ProClin

Precaution of Use: This product contains ProClin: a POISONOUS AND HAZARDOUS SUBSTANCE which should be handled by trained staff only.

Storage: -20 °C, -80 °C

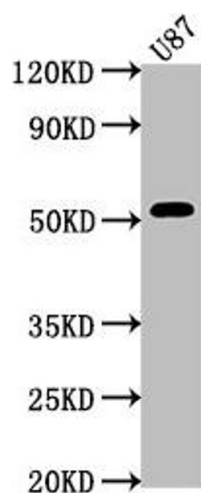
Storage Comment: Upon receipt, store at -20°C or -80°C. Avoid repeated freeze.

## Images



### Immunohistochemistry

**Image 1.** IHC image of ABIN7171044 diluted at 1:600 and staining in paraffin-embedded human heart tissue performed on a Leica Bond™ system. After dewaxing and hydration, antigen retrieval was mediated by high pressure in a citrate buffer (pH 6.0). Section was blocked with 10 % normal goat serum 30 min at RT. Then primary antibody (1 % BSA) was incubated at 4 °C overnight. The primary is detected by a biotinylated secondary antibody and visualized using an HRP conjugated SP system.



Western Blotting

**Image 2.** Western Blot Positive WB detected in: U87 whole cell lysate All lanes: SRPX antibody at 1:2000 Secondary Goat polyclonal to rabbit IgG at 1/50000 dilution Predicted band size: 52, 50, 46, 42 kDa Observed band size: 52 kDa