

Datasheet for ABIN7171052  
**anti-SMARCC1 antibody (AA 80-320)**[Go to Product page](#)

## 1 Image

## Overview

Quantity:	100 µL
Target:	SMARCC1
Binding Specificity:	AA 80-320
Reactivity:	Human
Host:	Rabbit
Clonality:	Polyclonal
Conjugate:	This SMARCC1 antibody is un-conjugated
Application:	Immunohistochemistry (IHC), ELISA

## Product Details

Immunogen:	Recombinant Human SWI/SNF complex subunit SMARCC1 protein (80-320AA)
Isotype:	IgG
Cross-Reactivity:	Human
Purification:	Antigen Affinity Purified

## Target Details

Target:	SMARCC1
Alternative Name:	SMARCC1 ( <a href="#">SMARCC1 Products</a> )
Background:	Background: Involved in transcriptional activation and repression of select genes by chromatin remodeling (alteration of DNA-nucleosome topology). May stimulate the ATPase activity of the

## Target Details

catalytic subunit of the complex. Belongs to the neural progenitors-specific chromatin remodeling complex (npBAF complex) and the neuron-specific chromatin remodeling complex (nBAF complex). During neural development a switch from a stem/progenitor to a postmitotic chromatin remodeling mechanism occurs as neurons exit the cell cycle and become committed to their adult state. The transition from proliferating neural stem/progenitor cells to postmitotic neurons requires a switch in subunit composition of the npBAF and nBAF complexes. As neural progenitors exit mitosis and differentiate into neurons, npBAF complexes which contain ACTL6A/BAF53A and PHF10/BAF45A, are exchanged for homologous alternative ACTL6B/BAF53B and DPF1/BAF45B or DPF3/BAF45C subunits in neuron-specific complexes (nBAF). The npBAF complex is essential for the self-renewal/proliferative capacity of the multipotent neural stem cells. The nBAF complex along with CREST plays a role regulating the activity of genes essential for dendrite growth (By similarity).

Aliases: AI115498 antibody, BAF 155 antibody, BAF155 antibody, BRG 1 associated factor 155 antibody, BRG1 associated factor 155 antibody, BRG1-associated factor 155 antibody, Chromatin remodeling complex BAF155 subunit antibody, CRACC 1 antibody, CRACC1 antibody, Mammalian chromatin remodeling complex BRG 1 associated factor 155 antibody, Mammalian chromatin remodeling complex BRG1 associated factor 155 antibody, Rsc 8 antibody, Rsc8 antibody, SMARCC1 antibody, SMARCC 1 antibody, SMARCC1 antibody, SMRC1\_HUMAN antibody, SRG 3 antibody, SRG3 antibody, SWI 3 antibody, SWI/SNF complex 155 kDa subunit antibody, SWI/SNF complex subunit SMARCC1 antibody, SWI/SNF related matrix associated actin dependent regulator of chromatin c1 antibody, SWI/SNF related matrix associated actin dependent regulator of chromatin subfamily c member 1 antibody, SWI/SNF-related matrix-associated actin-dependent regulator of chromatin subfamily C member 1 antibody, SWI3 antibody

UniProt: [Q92922](#)

Pathways: [Chromatin Binding](#)

## Application Details

Application Notes: Recommended dilution: IHC:1:20-1:200,

Restrictions: For Research Use only

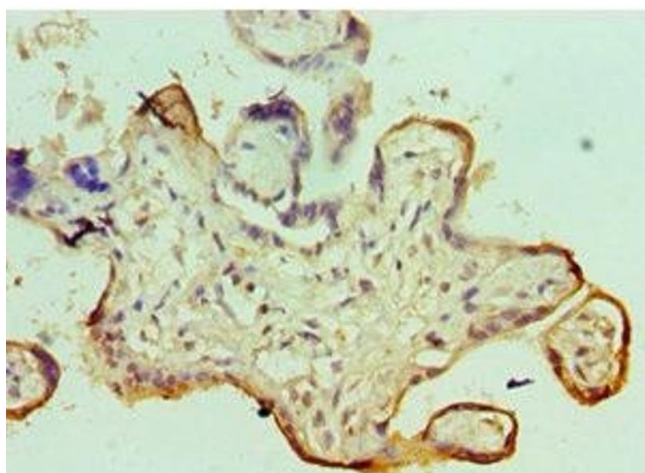
## Handling

Format: Liquid

## Handling

Buffer:	PBS with 0.02 % sodium azide, 50 % glycerol, pH 7.3.
Preservative:	Sodium azide
Precaution of Use:	This product contains Sodium azide: a POISONOUS AND HAZARDOUS SUBSTANCE which should be handled by trained staff only.
Storage:	-20 °C,-80 °C
Storage Comment:	Upon receipt, store at -20°C or -80°C. Avoid repeated freeze.

## Images



### Immunohistochemistry

**Image 1.** Immunohistochemistry of paraffin-embedded human placenta tissue using ABIN7171052 at dilution of 1:100