



[Go to Product page](#)

Datasheet for ABIN7171095
anti-SYN1 antibody (AA 113-420)

2 Images

Overview

| | |
|----------------------|--|
| Quantity: | 100 µg |
| Target: | SYN1 |
| Binding Specificity: | AA 113-420 |
| Reactivity: | Human |
| Host: | Rabbit |
| Clonality: | Polyclonal |
| Conjugate: | This SYN1 antibody is un-conjugated |
| Application: | Western Blotting (WB), ELISA, Immunohistochemistry (IHC) |

Product Details

| | |
|-------------------|--|
| Immunogen: | Recombinant Human Synapsin-1 protein (113-420AA) |
| Isotype: | IgG |
| Cross-Reactivity: | Human, Mouse |
| Purification: | >95%, Protein G purified |

Target Details

| | |
|-------------------|--|
| Target: | SYN1 |
| Alternative Name: | SYN1 (SYN1 Products) |
| Background: | Background: Neuronal phosphoprotein that coats synaptic vesicles, binds to the cytoskeleton, and is believed to function in the regulation of neurotransmitter release. The complex formed |

Target Details

with NOS1 and CAPON proteins is necessary for specific nitric-oxid functions at a presynaptic level.

Aliases: Brain protein 4.1 antibody, SYN 1 antibody, SYN 1a antibody, SYN 1b antibody, SYN I antibody, SYN1 antibody, SYN1_HUMAN antibody, SYN1a antibody, SYN1b antibody, Synapsin 1 antibody, Synapsin I antibody, Synapsin-1 antibody, Synapsin1 antibody, SynapsinI antibody, SYNI antibody

UniProt: [P17600](#)

Application Details

Application Notes: Recommended dilution: WB:1:1000-1:5000, IHC:1:20-1:200,

Restrictions: For Research Use only

Handling

Format: Liquid

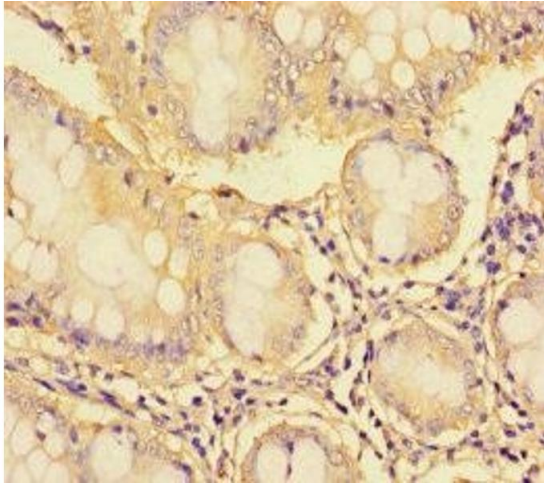
Buffer: Preservative: 0.03 % Proclin 300
Constituents: 50 % Glycerol, 0.01M PBS, PH 7.4

Preservative: ProClin

Precaution of Use: This product contains ProClin: a POISONOUS AND HAZARDOUS SUBSTANCE which should be handled by trained staff only.

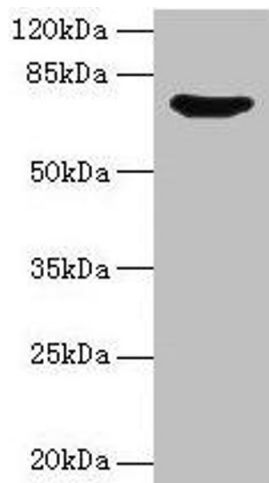
Storage: -20 °C,-80 °C

Storage Comment: Upon receipt, store at -20°C or -80°C. Avoid repeated freeze.



Immunohistochemistry

Image 1. Immunohistochemistry of paraffin-embedded human colon cancer using ABIN7171095 at dilution of 1:100



Western Blotting

Image 2. Western blot All lanes: SYN1 antibody at 12 $\mu\text{g}/\text{mL}$ + Mouse brain tissue Secondary Goat polyclonal to rabbit IgG at 1/10000 dilution Predicted band size: 75, 71 kDa Observed band size: 75 kDa