



[Go to Product page](#)

Datasheet for ABIN7171179  
**anti-ERVW-1 antibody (AA 21-443)**

2 Images

### Overview

Quantity:	100 µg
Target:	ERVW-1
Binding Specificity:	AA 21-443
Reactivity:	Human
Host:	Rabbit
Clonality:	Polyclonal
Conjugate:	This ERVW-1 antibody is un-conjugated
Application:	ELISA, Immunohistochemistry (IHC), Immunofluorescence (IF)

### Product Details

Immunogen:	Recombinant Human Syncytin-1 protein (21-443AA)
Isotype:	IgG
Cross-Reactivity:	Human
Purification:	>95%, Protein G purified

### Target Details

Target:	ERVW-1
Alternative Name:	ERVW-1 ( <a href="#">ERVW-1 Products</a> )
Background:	Background: This endogenous retroviral envelope protein has retained its original fusogenic properties and participates in trophoblast fusion and the formation of a syncytium during

## Target Details

---

placenta morphogenesis. May induce fusion through binding of SLC1A4 and SLC1A5 (PubMed:10708449, PubMed:12050356, PubMed:23492904).

Aliases: ERVW-1 antibody, ERVWE1 antibody, Syncytin-1 antibody, Endogenous retrovirus group W member 1 antibody, Env-W antibody, Envelope polyprotein gPr73 antibody, Enverin antibody, HERV-7q Envelope protein antibody, HERV-W envelope protein antibody, HERV-W\_7q21.2 provirus ancestral Env polyprotein antibody, Syncytin) [Cleaved into: Surface protein antibody, SU antibody, gp50), Transmembrane protein antibody, TM antibody, gp24)] antibody

UniProt: [Q9UQF0](#)

## Application Details

---

Application Notes: Recommended dilution: IHC:1:20-1:200, IF:1:50-1:200,

Restrictions: For Research Use only

## Handling

---

Format: Liquid

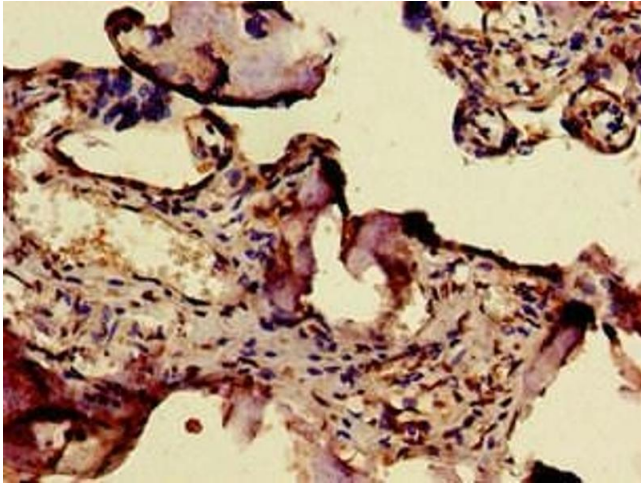
Buffer: Preservative: 0.03 % Proclin 300  
Constituents: 50 % Glycerol, 0.01M PBS, pH 7.4

Preservative: ProClin

Precaution of Use: This product contains ProClin: a POISONOUS AND HAZARDOUS SUBSTANCE which should be handled by trained staff only.

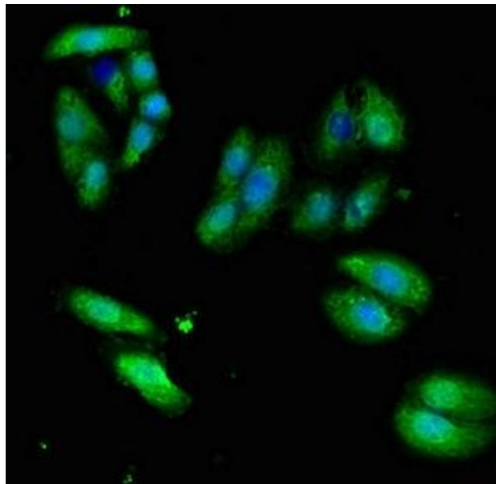
Storage: -20 °C,-80 °C

Storage Comment: Upon receipt, store at -20°C or -80°C. Avoid repeated freeze.



### Immunohistochemistry

**Image 1.** Immunohistochemistry of paraffin-embedded human placenta tissue using ABIN7171179 at dilution of 1:100



### Immunofluorescence

**Image 2.** Immunofluorescent analysis of HepG2 cells using ABIN7171179 at dilution of 1:100 and Alexa Fluor 488-conjugated AffiniPure Goat Anti-Rabbit IgG(H+L)