



[Go to Product page](#)

Datasheet for ABIN7171318
anti-TBX4 antibody (AA 355-511)

1 Image

Overview

| | |
|----------------------|-------------------------------------|
| Quantity: | 100 µg |
| Target: | TBX4 |
| Binding Specificity: | AA 355-511 |
| Reactivity: | Human |
| Host: | Rabbit |
| Clonality: | Polyclonal |
| Conjugate: | This TBX4 antibody is un-conjugated |
| Application: | Western Blotting (WB), ELISA |

Product Details

| | |
|-------------------|---|
| Immunogen: | Recombinant Human T-box transcription factor TBX4 protein (355-511AA) |
| Isotype: | IgG |
| Cross-Reactivity: | Human |
| Purification: | >95%, Protein G purified |

Target Details

| | |
|-------------------|---|
| Target: | TBX4 |
| Alternative Name: | TBX4 (TBX4 Products) |
| Background: | Background: Involved in the transcriptional regulation of genes required for mesoderm differentiation. Probably plays a role in limb pattern formation. |

Target Details

Aliases: SPS antibody, T box 4 antibody, T box protein 4 antibody, T box transcription factor TBX 4 antibody, T box transcription factor TBX4 antibody, T-box protein 4 antibody, T-box transcription factor TBX4 antibody, TBX 4 antibody, TBX4 antibody, TBX4_HUMAN antibody

UniProt: [P57082](#)

Application Details

Application Notes: Recommended dilution: WB:1:500-1:5000,

Restrictions: For Research Use only

Handling

Format: Liquid

Buffer: Preservative: 0.03 % Proclin 300
Constituents: 50 % Glycerol, 0.01M PBS, pH 7.4

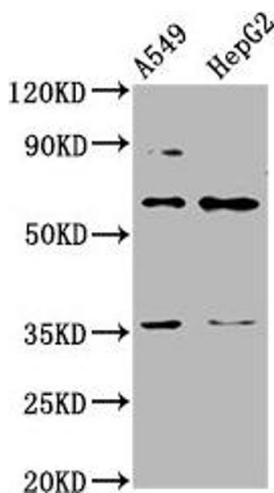
Preservative: ProClin

Precaution of Use: This product contains ProClin: a POISONOUS AND HAZARDOUS SUBSTANCE which should be handled by trained staff only.

Storage: -20 °C,-80 °C

Storage Comment: Upon receipt, store at -20°C or -80°C. Avoid repeated freeze.

Images



Western Blotting

Image 1. Western Blot Positive WB detected in: A549 whole cell lysate, HepG2 whole cell lysate All lanes: TBX4 antibody at 4.3 µg/mL Secondary Goat polyclonal to rabbit IgG at 1/50000 dilution Predicted band size: 61 kDa Observed band size: 61 kDa