

Datasheet for ABIN7171357  
**anti-TCL1B antibody (AA 1-128)**

## 2 Images

[Go to Product page](#)

## Overview

Quantity:	100 µL
Target:	TCL1B
Binding Specificity:	AA 1-128
Reactivity:	Human
Host:	Rabbit
Clonality:	Polyclonal
Conjugate:	This TCL1B antibody is un-conjugated
Application:	ELISA, Immunohistochemistry (IHC)

## Product Details

Immunogen:	Recombinant Human T-cell leukemia/lymphoma protein 1B protein (1-128AA)
Isotype:	IgG
Cross-Reactivity:	Human
Purification:	>95%, Protein G purified

## Target Details

Target:	TCL1B
Alternative Name:	TCL1B ( <a href="#">TCL1B Products</a> )
Background:	Background: Enhances the phosphorylation and activation of AKT1 and AKT2. Aliases: TCL1B antibody, TCL1 antibody, T-cell leukemia/lymphoma protein 1B antibody,

## Target Details

Oncogene TCL-1B antibody, Oncogene TCL1B antibody, SYN-1 antibody, Syncytiotrophoblast-specific protein antibody, TCL1/MTCP1-like protein 1 antibody

UniProt: [O95988](#)

## Application Details

Application Notes: Recommended dilution: IHC:1:200-1:500,

Restrictions: For Research Use only

## Handling

Format: Liquid

Buffer: Preservative: 0.03 % Proclin 300  
Constituents: 50 % Glycerol, 0.01M PBS, pH 7.4

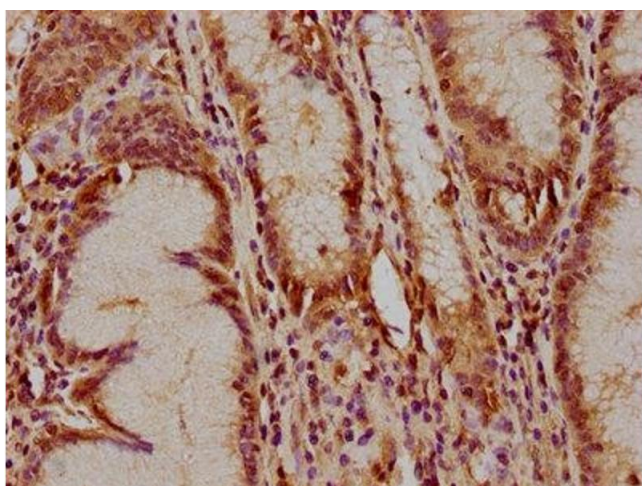
Preservative: ProClin

Precaution of Use: This product contains ProClin: a POISONOUS AND HAZARDOUS SUBSTANCE which should be handled by trained staff only.

Storage: -20 °C,-80 °C

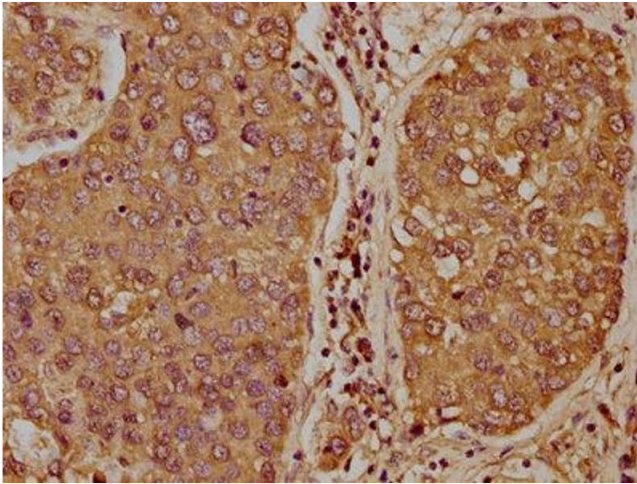
Storage Comment: Upon receipt, store at -20°C or -80°C. Avoid repeated freeze.

## Images



### Immunohistochemistry

**Image 1.** IHC image of ABIN7171357 diluted at 1:400 and staining in paraffin-embedded human gastric cancer performed on a Leica Bond™ system. After dewaxing and hydration, antigen retrieval was mediated by high pressure in a citrate buffer (pH 6.0). Section was blocked with 10% normal goat serum 30min at RT. Then primary antibody (1% BSA) was incubated at 4°C overnight. The primary is detected by a biotinylated secondary antibody and visualized using an HRP conjugated SP system.



#### Immunohistochemistry

**Image 2.** IHC image of ABIN7171357 diluted at 1:400 and staining in paraffin-embedded human liver cancer performed on a Leica Bond™ system. After dewaxing and hydration, antigen retrieval was mediated by high pressure in a citrate buffer (pH 6.0). Section was blocked with 10% normal goat serum 30min at RT. Then primary antibody (1% BSA) was incubated at 4°C overnight. The primary is detected by a biotinylated secondary antibody and visualized using an HRP conjugated SP system.