

Datasheet for ABIN7171386
anti-CD3 epsilon antibody (AA 23-207)[Go to Product page](#)

4 Images

Overview

Quantity:	100 µg
Target:	CD3 epsilon (CD3E)
Binding Specificity:	AA 23-207
Reactivity:	Human
Host:	Rabbit
Clonality:	Polyclonal
Conjugate:	This CD3 epsilon antibody is un-conjugated
Application:	Western Blotting (WB), Immunohistochemistry (IHC), Immunofluorescence (IF), ELISA

Product Details

Immunogen:	Recombinant Human T-cell surface glycoprotein CD3 epsilon chain protein (23-207AA)
Isotype:	IgG
Cross-Reactivity:	Human
Purification:	>95%, Protein G purified

Target Details

Target:	CD3 epsilon (CD3E)
Alternative Name:	CD3E (CD3E Products)
Background:	Background: Part of the TCR-CD3 complex present on T-lymphocyte cell surface that plays an essential role in adaptive immune response. When antigen presenting cells (APCs) activate T-

Target Details

cell receptor (TCR), TCR-mediated signals are transmitted across the cell membrane by the CD3 chains CD3D, CD3E, CD3G and CD3Z. All CD3 chains contain immunoreceptor tyrosine-based activation motifs (ITAMs) in their cytoplasmic domain. Upon TCR engagement, these motifs become phosphorylated by Src family protein tyrosine kinases LCK and FYN, resulting in the activation of downstream signaling pathways (PubMed:2470098). In addition of this role of signal transduction in T-cell activation, CD3E plays an essential role in correct T-cell development. Initiates the TCR-CD3 complex assembly by forming the two heterodimers CD3D/CD3E and CD3G/CD3E. Participates also in internalization and cell surface down-regulation of TCR-CD3 complexes via endocytosis sequences present in CD3E cytosolic region (PubMed:10384095, PubMed:26507128).

Aliases: CD3 epsilon antibody, CD3e antibody, CD3e antigen antibody, CD3e antigen epsilon polypeptide (TiT3 complex) antibody, CD3E antigen epsilon polypeptide antibody, CD3E antigen, epsilon subunit antibody, CD3e molecule epsilon antibody, CD3e molecule, epsilon (CD3 TCR complex) antibody, CD3e molecule, epsilon (CD3-TCR complex) antibody, CD3E_HUMAN antibody, IMD18 antibody, T cell antigen receptor complex epsilon subunit of T3 antibody, T cell surface antigen T3/Leu 4 epsilon chain antibody, T cell surface glycoprotein CD3 epsilon chain antibody, T-cell surface antigen T3/Leu-4 epsilon chain antibody, T-cell surface glycoprotein CD3 epsilon chain antibody, T3E antibody, TCRE antibody

UniProt: [P07766](#)

Pathways: [TCR Signaling](#), [CXCR4-mediated Signaling Events](#), [Ubiquitin Proteasome Pathway](#)

Application Details

Application Notes: Recommended dilution: WB:1:1000-1:5000, IHC:1:20-1:200, IF:1:50-1:200,

Restrictions: For Research Use only

Handling

Format: Liquid

Buffer: Preservative: 0.03 % Proclin 300
Constituents: 50 % Glycerol, 0.01M PBS, PH 7.4

Preservative: ProClin

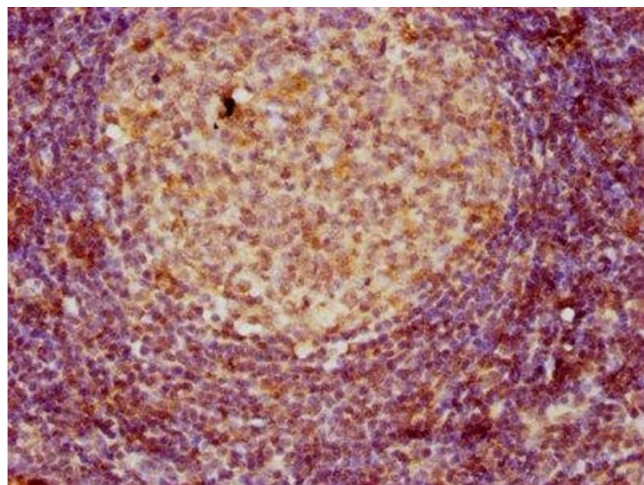
Precaution of Use: This product contains ProClin: a POISONOUS AND HAZARDOUS SUBSTANCE which should be handled by trained staff only.

Handling

Storage: -20 °C, -80 °C

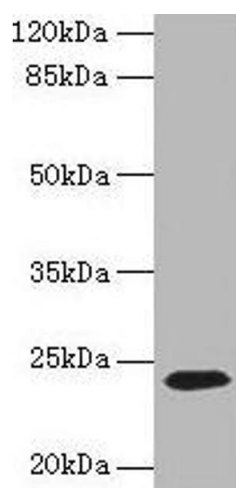
Storage Comment: Upon receipt, store at -20°C or -80°C. Avoid repeated freeze.

Images



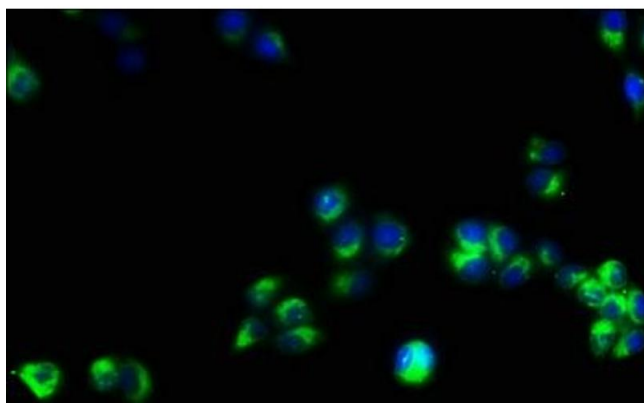
Immunohistochemistry

Image 1. IHC image of ABIN7171386 diluted at 1:80 and staining in paraffin-embedded human lymph node tissue performed on a Leica Bond™ system. After dewaxing and hydration, antigen retrieval was mediated by high pressure in a citrate buffer (pH 6.0). Section was blocked with 10% normal goat serum 30min at RT. Then primary antibody (1% BSA) was incubated at 4°C overnight. The primary is detected by a biotinylated secondary antibody and visualized using an HRP conjugated SP system.



Western Blotting

Image 2. Western blot All lanes: CD3E antibody at 1.5 µg/mL + Jurkat whole cell lysate Secondary Goat polyclonal to rabbit IgG at 1/10000 dilution Predicted band size: 24 kDa Observed band size: 24 kDa



Immunofluorescence

Image 3. Immunofluorescence staining of PC-3 cells with ABIN7171386 at 1:53, counter-stained with DAPI. The cells were fixed in 4% formaldehyde, permeabilized using 0.2% Triton X-100 and blocked in 10% normal Goat Serum. The cells were then incubated with the antibody overnight at 4°C. The secondary antibody was Alexa Fluor 488-conjugated AffiniPure Goat Anti-Rabbit IgG(H+L).

Images

Please check the [product details page](#) for more images. Overall 4 images are available for ABIN7171386.