



[Go to Product page](#)

Datasheet for ABIN7171390  
**anti-CD3G antibody (AA 138-182)**

2 Images

Overview

Quantity:	100 µg
Target:	CD3G
Binding Specificity:	AA 138-182
Reactivity:	Human
Host:	Rabbit
Clonality:	Polyclonal
Conjugate:	This CD3G antibody is un-conjugated
Application:	ELISA, Western Blotting (WB), Immunofluorescence (IF)

Product Details

Immunogen:	Recombinant Human T-cell surface glycoprotein CD3 gamma chain protein (138-182AA)
Isotype:	IgG
Cross-Reactivity:	Human, Mouse, Rat
Purification:	>95%, Protein G purified

Target Details

Target:	CD3G
Alternative Name:	CD3G ( <a href="#">CD3G Products</a> )
Background:	Background: The CD3 complex mediates signal transduction. Aliases: CD3 gamma antibody, CD3-GAMMA antibody, CD3g antibody, CD3g antigen gamma

## Target Details

---

polypeptide (TiT3 complex) antibody, CD3g antigen gamma polypeptide antibody, CD3g molecule gamma (CD3 TCR complex) antibody, CD3g molecule gamma antibody, CD3G\_HUMAN antibody, FLJ17620 antibody, FLJ17664 antibody, FLJ79544 antibody, FLJ94613 antibody, MGC138597 antibody, T cell antigen receptor complex gamma subunit of T3 antibody, T-cell receptor T3 gamma chain antibody, T-cell surface glycoprotein CD3 gamma chain antibody, T3G antibody

UniProt: [P09693](#)

Pathways: [TCR Signaling](#), [CXCR4-mediated Signaling Events](#)

## Application Details

---

Application Notes: Recommended dilution: WB:1:500-1:5000, IF:1:50-1:200,

Restrictions: For Research Use only

## Handling

---

Format: Liquid

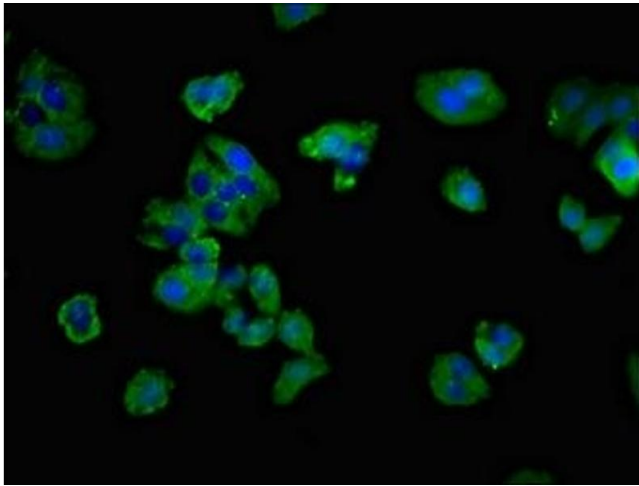
Buffer: Preservative: 0.03 % Proclin 300  
Constituents: 50 % Glycerol, 0.01M PBS, pH 7.4

Preservative: ProClin

Precaution of Use: This product contains ProClin: a POISONOUS AND HAZARDOUS SUBSTANCE which should be handled by trained staff only.

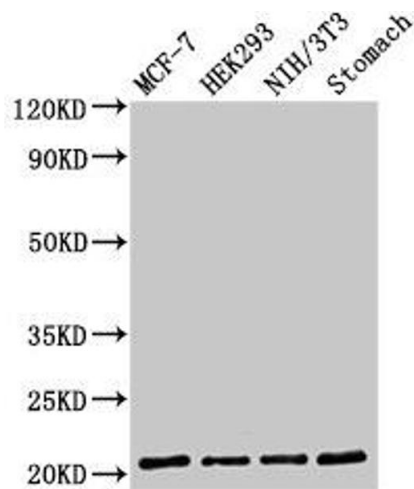
Storage: -20 °C,-80 °C

Storage Comment: Upon receipt, store at -20°C or -80°C. Avoid repeated freeze.



### Immunofluorescence

**Image 1.** Immunofluorescent analysis of HepG2 cells using ABIN7171390 at dilution of 1:100 and Alexa Fluor 488-conjugated AffiniPure Goat Anti-Rabbit IgG(H+L)



### Western Blotting

**Image 2.** Western Blot Positive WB detected in: MCF-7 whole cell lysate, HEK293 whole cell lysate, NIH/3T3 whole cell lysate, Rat stomach tissue All lanes: CD3G antibody at 2  $\mu$ g/mL Secondary Goat polyclonal to rabbit IgG at 1/50000 Predicted band size: 21 kDa Observed band size: 21 kDa