



[Go to Product page](#)

Datasheet for ABIN7171412

anti-TCP1 alpha/CCTA antibody (AA 406-506)

3 Images

Overview

Quantity:	100 µg
Target:	TCP1 alpha/CCTA (TCP1)
Binding Specificity:	AA 406-506
Reactivity:	Human
Host:	Rabbit
Clonality:	Polyclonal
Conjugate:	This TCP1 alpha/CCTA antibody is un-conjugated
Application:	Immunofluorescence (IF), ELISA, Immunohistochemistry (IHC)

Product Details

Immunogen:	Recombinant Human T-complex protein 1 subunit alpha protein (406-506AA)
Isotype:	IgG
Cross-Reactivity:	Human
Purification:	>95%, Protein G purified

Target Details

Target:	TCP1 alpha/CCTA (TCP1)
Alternative Name:	TCP1 (TCP1 Products)
Background:	Background: Molecular chaperone, assists the folding of proteins upon ATP hydrolysis. As part of the BBS/CCT complex may play a role in the assembly of BBSome, a complex involved in

Target Details

ciliogenesis regulating transports vesicles to the cilia. Known to play a role, in vitro, in the folding of actin and tubulin.

Aliases: AI528772 antibody, c-cpn antibody, CCT alpha antibody, CCT antibody, CCT-alpha antibody, CCT1 antibody, Ccta antibody, CCTalpha antibody, D6S230E antibody, MGC133746 antibody, p63 antibody, T complex 1 antibody, T complex protein 1 alpha subunit antibody, T complex protein 1 antibody, T-complex homolog TCP1 antibody, T-complex protein 1 subunit alpha antibody, T-complex protein 1 subunit alpha B antibody, Tailless complex polypeptide 1 antibody, Tailless complex polypeptide 1A antibody, Tailless complex polypeptide 1B antibody, TCP 1 alpha antibody, Tcp-1 antibody, TCP-1-alpha antibody, TCP1 antibody, TCPA_HUMAN antibody, Tp63 antibody, TRic antibody

UniProt: [P17987](#)

Application Details

Application Notes: Recommended dilution: IHC:1:500-1:1000, IF:1:200-1:500,

Restrictions: For Research Use only

Handling

Format: Liquid

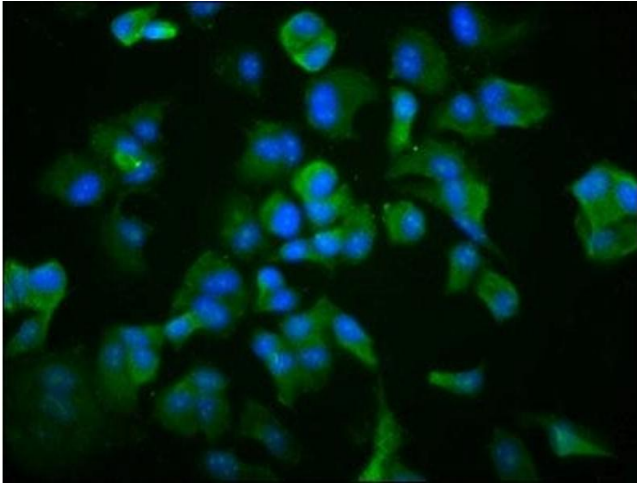
Buffer: Preservative: 0.03 % Proclin 300
Constituents: 50 % Glycerol, 0.01M PBS, pH 7.4

Preservative: ProClin

Precaution of Use: This product contains ProClin: a POISONOUS AND HAZARDOUS SUBSTANCE which should be handled by trained staff only.

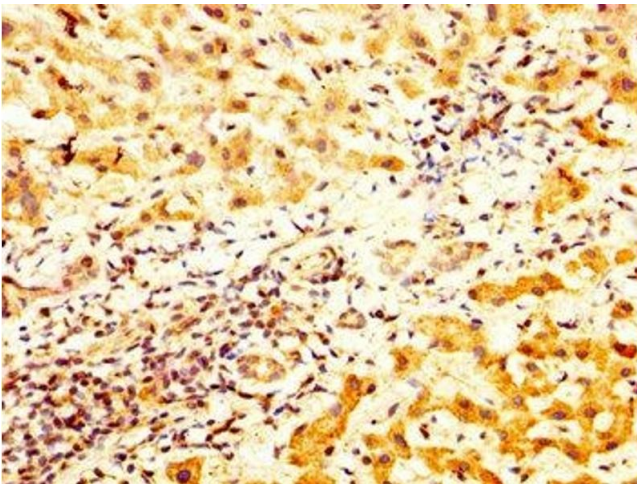
Storage: -20 °C,-80 °C

Storage Comment: Upon receipt, store at -20°C or -80°C. Avoid repeated freeze.



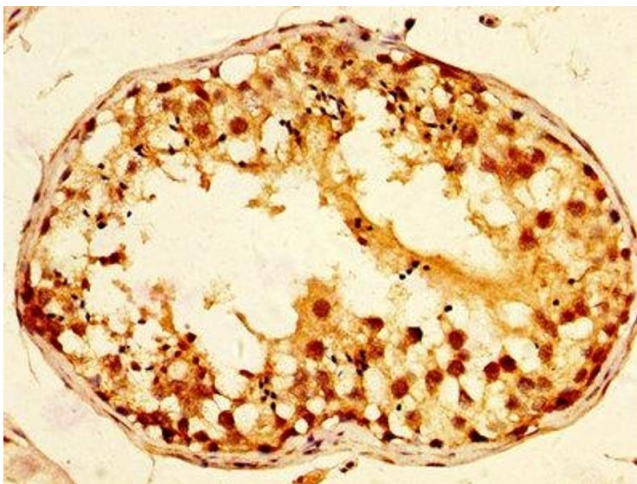
Immunofluorescence

Image 1. Immunofluorescence staining of MCF-7 cells with ABIN7171412 at 1:266, counter-stained with DAPI. The cells were fixed in 4% formaldehyde, permeabilized using 0.2% Triton X-100 and blocked in 10% normal Goat Serum. The cells were then incubated with the antibody overnight at 4°C. The secondary antibody was Alexa Fluor 488-conjugated AffiniPure Goat Anti-Rabbit IgG(H+L).



Immunohistochemistry

Image 2. IHC image of ABIN7171412 diluted at 1:800 and staining in paraffin-embedded human liver cancer performed on a Leica Bond™ system. After dewaxing and hydration, antigen retrieval was mediated by high pressure in a citrate buffer (pH 6.0). Section was blocked with 10% normal goat serum 30min at RT. Then primary antibody (1% BSA) was incubated at 4°C overnight. The primary is detected by a biotinylated secondary antibody and visualized using an HRP conjugated SP system.



Immunohistochemistry

Image 3. IHC image of ABIN7171412 diluted at 1:800 and staining in paraffin-embedded human testis tissue performed on a Leica Bond™ system. After dewaxing and hydration, antigen retrieval was mediated by high pressure in a citrate buffer (pH 6.0). Section was blocked with 10% normal goat serum 30min at RT. Then primary antibody (1% BSA) was incubated at 4°C overnight. The primary is detected by a biotinylated secondary antibody and visualized using an HRP conjugated SP system.