



[Go to Product page](#)

Datasheet for ABIN7171417  
**anti-CCT5 antibody (AA 1-270)**

4 Images

Overview

Quantity:	100 µL
Target:	CCT5
Binding Specificity:	AA 1-270
Reactivity:	Human
Host:	Rabbit
Clonality:	Polyclonal
Conjugate:	This CCT5 antibody is un-conjugated
Application:	Western Blotting (WB), ELISA, Immunohistochemistry (IHC), Immunoprecipitation (IP)

Product Details

Immunogen:	Recombinant Human T-complex protein 1 subunit epsilon protein (1-270AA)
Isotype:	IgG
Cross-Reactivity:	Human
Purification:	Antigen Affinity Purified

Target Details

Target:	CCT5
Alternative Name:	CCT5 ( <a href="#">CCT5 Products</a> )
Background:	Background: Molecular chaperone, assists the folding of proteins upon ATP hydrolysis. As part of the BBS/CCT complex may play a role in the assembly of BBSome, a complex involved in

## Target Details

---

ciliogenesis regulating transports vesicles to the cilia. Known to play a role, in vitro, in the folding of actin and tubulin.

Aliases: CCT 5 antibody, CCT epsilon antibody, CCT-epsilon antibody, CCT5 antibody, CCTE antibody, CCTepsilon antibody, Chaperonin containing T-complex polypeptide 1, subunit 5 antibody, Chaperonin containing TCP 1 epsilon antibody, Chaperonin containing TCP 1 subunit 5 antibody, Chaperonin containing TCP 1 subunit 5 epsilon antibody, Chaperonin containing TCP1 epsilon antibody, Chaperonin containing TCP1 subunit 5 antibody, Chaperonin containing TCP1 subunit 5 epsilon antibody, KIAA0098 antibody, T complex protein 1 epsilon subunit antibody, T complex protein 1 subunit epsilon antibody, T-complex protein 1 subunit epsilon antibody, TCP 1 epsilon antibody, TCP-1-epsilon antibody, TCP1epsilon antibody, TCPE antibody, TCPE\_HUMAN antibody

---

UniProt: [P48643](#)

## Application Details

---

Application Notes: Recommended dilution: WB:1:500-1:5000, IHC:1:20-1:200, IP:1:200-1:2000,

Restrictions: For Research Use only

## Handling

---

Format: Liquid

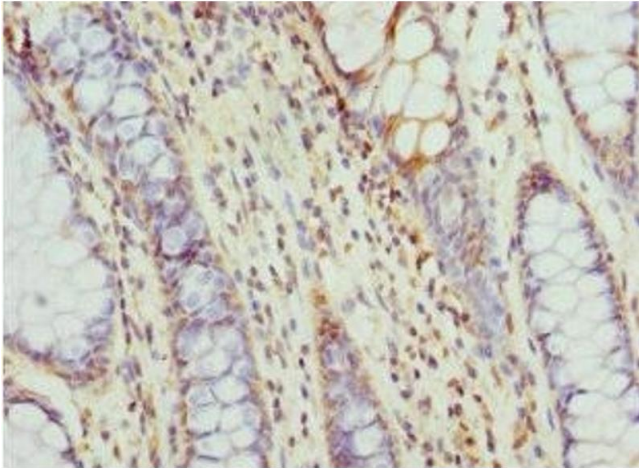
Buffer: PBS with 0.02 % sodium azide, 50 % glycerol, pH 7.3.

Preservative: Sodium azide

Precaution of Use: This product contains Sodium azide: a POISONOUS AND HAZARDOUS SUBSTANCE which should be handled by trained staff only.

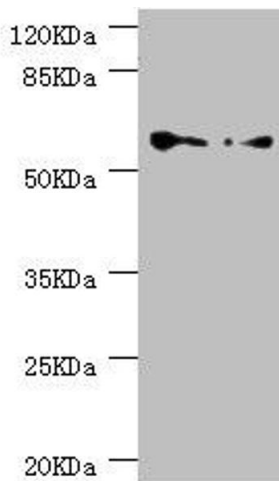
Storage: -20 °C,-80 °C

Storage Comment: Upon receipt, store at -20°C or -80°C. Avoid repeated freeze.



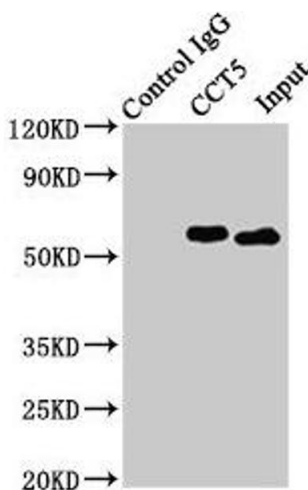
### Immunohistochemistry

**Image 1.** Immunohistochemistry of paraffin-embedded human colon cancer using ABIN7171417 at dilution of 1:100



### Western Blotting

**Image 2.** Western blot All lanes: CCT5 antibody at 1.78  $\mu$ g/mL Lane 1: HeLa whole cell lysate Lane 2: Colo320 whole cell lysate Secondary Goat polyclonal to rabbit IgG at 1/10000 dilution Predicted band size: 60, 50 kDa Observed band size: 60 kDa



### Western Blotting

**Image 3.** Immunoprecipitating CCT5 in HeLa whole cell lysate Lane 1: Rabbit control IgG (1  $\mu$ g) instead of ABIN7171417 in HeLa whole cell lysate. For western blotting, a HRP-conjugated Protein G antibody was used as the secondary antibody (1/2000) Lane 2: ABIN7171417 (8  $\mu$ g) + HeLa whole cell lysate (500  $\mu$ g) Lane 3: HeLa whole cell lysate (10  $\mu$ g)

Please check the [product details page](#) for more images. Overall 4 images are available for ABIN7171417.