

Datasheet for ABIN7171419
anti-CCT5 antibody (AA 1-270)[Go to Product page](#)

2 Images

Overview

| | |
|----------------------|---|
| Quantity: | 100 µg |
| Target: | CCT5 |
| Binding Specificity: | AA 1-270 |
| Reactivity: | Human |
| Host: | Rabbit |
| Clonality: | Polyclonal |
| Conjugate: | This CCT5 antibody is un-conjugated |
| Application: | Western Blotting (WB), ELISA, Immunofluorescence (IF) |

Product Details

| | |
|-------------------|---|
| Immunogen: | Recombinant Human T-complex protein 1 subunit epsilon protein (1-270AA) |
| Isotype: | IgG |
| Cross-Reactivity: | Human |
| Purification: | >95%, Protein G purified |

Target Details

| | |
|-------------------|---|
| Target: | CCT5 |
| Alternative Name: | CCT5 (CCT5 Products) |
| Background: | Background: Molecular chaperone, assists the folding of proteins upon ATP hydrolysis. As part of the BBS/CCT complex may play a role in the assembly of BBSome, a complex involved in |

Target Details

ciliogenesis regulating transports vesicles to the cilia. Known to play a role, in vitro, in the folding of actin and tubulin.

Aliases: CCT 5 antibody, CCT epsilon antibody, CCT-epsilon antibody, CCT5 antibody, CCTE antibody, CCTepsilon antibody, Chaperonin containing T-complex polypeptide 1, subunit 5 antibody, Chaperonin containing TCP 1 epsilon antibody, Chaperonin containing TCP 1 subunit 5 antibody, Chaperonin containing TCP 1 subunit 5 epsilon antibody, Chaperonin containing TCP1 epsilon antibody, Chaperonin containing TCP1 subunit 5 antibody, Chaperonin containing TCP1 subunit 5 epsilon antibody, KIAA0098 antibody, T complex protein 1 epsilon subunit antibody, T complex protein 1 subunit epsilon antibody, T-complex protein 1 subunit epsilon antibody, TCP 1 epsilon antibody, TCP-1-epsilon antibody, TCP1epsilon antibody, TCPE antibody, TCPE_HUMAN antibody

UniProt: [P48643](#)

Application Details

Application Notes: Recommended dilution: WB:1:500-1:5000, IF:1:50-1:200,

Restrictions: For Research Use only

Handling

Format: Liquid

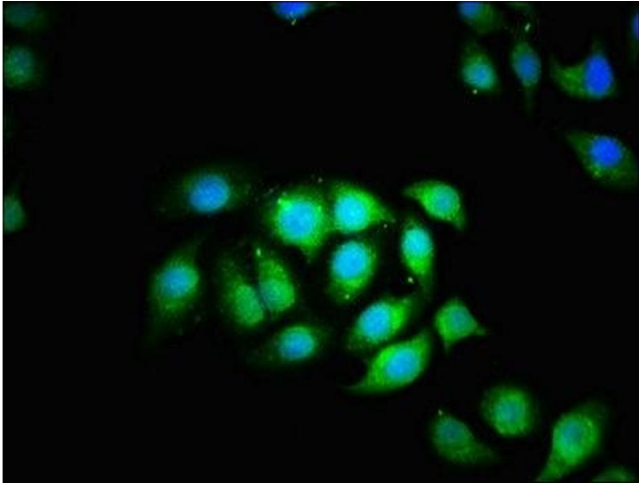
Buffer: Preservative: 0.03 % Proclin 300
Constituents: 50 % Glycerol, 0.01M PBS, pH 7.4

Preservative: ProClin

Precaution of Use: This product contains ProClin: a POISONOUS AND HAZARDOUS SUBSTANCE which should be handled by trained staff only.

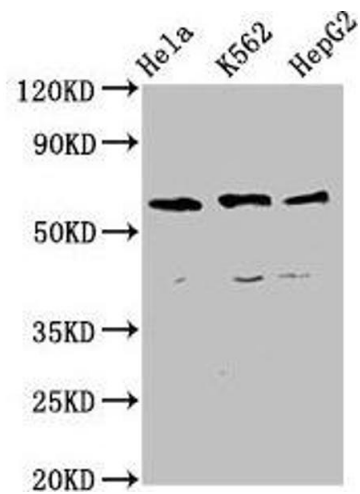
Storage: -20 °C,-80 °C

Storage Comment: Upon receipt, store at -20°C or -80°C. Avoid repeated freeze.



Immunofluorescence

Image 1. Immunofluorescence staining of A549 cells with ABIN7171419 at 1:166, counter-stained with DAPI. The cells were fixed in 4% formaldehyde, permeabilized using 0.2% Triton X-100 and blocked in 10% normal Goat Serum. The cells were then incubated with the antibody overnight at 4°C. The secondary antibody was Alexa Fluor 488-conjugated AffiniPure Goat Anti-Rabbit IgG(H+L).



Western Blotting

Image 2. Western Blot Positive WB detected in: Hela whole cell lysate, K562 whole cell lysate, HepG2 whole cell lysate. All lanes: CCT5 antibody at 4 µg/mL. Secondary Goat polyclonal to rabbit IgG at 1/50000 dilution. Predicted band size: 60, 50 kDa. Observed band size: 60 kDa.