

Datasheet for ABIN7171433  
**anti-CCT6A antibody (AA 80-250)**[Go to Product page](#)

## 1 Image

## Overview

Quantity:	100 µg
Target:	CCT6A
Binding Specificity:	AA 80-250
Reactivity:	Human
Host:	Rabbit
Clonality:	Polyclonal
Conjugate:	This CCT6A antibody is un-conjugated
Application:	Western Blotting (WB), ELISA

## Product Details

Immunogen:	Recombinant Human T-complex protein 1 subunit zeta protein (80-250AA)
Isotype:	IgG
Cross-Reactivity:	Human
Purification:	>95%, Protein G purified

## Target Details

Target:	CCT6A
Alternative Name:	CCT6A ( <a href="#">CCT6A Products</a> )
Background:	Background: Molecular chaperone, assists the folding of proteins upon ATP hydrolysis. Known to play a role, in vitro, in the folding of actin and tubulin.

## Target Details

Aliases: CCT6A antibody, CCT6 antibody, CCTZ antibody, T-complex protein 1 subunit zeta antibody, TCP-1-zeta antibody, Acute morphine dependence-related protein 2 antibody, CCT-zeta-1 antibody, HTR3 antibody, Tcp20 antibody

UniProt: [P40227](#)

## Application Details

Application Notes: Recommended dilution: WB:1:500-1:5000,

Restrictions: For Research Use only

## Handling

Format: Liquid

Buffer: Preservative: 0.03 % Proclin 300  
Constituents: 50 % Glycerol, 0.01M PBS, pH 7.4

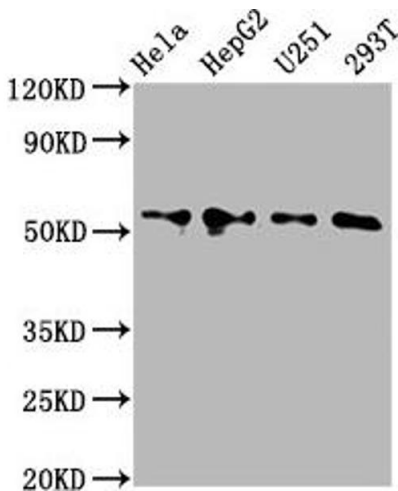
Preservative: ProClin

Precaution of Use: This product contains ProClin: a POISONOUS AND HAZARDOUS SUBSTANCE which should be handled by trained staff only.

Storage: -20 °C,-80 °C

Storage Comment: Upon receipt, store at -20°C or -80°C. Avoid repeated freeze.

## Images



### Western Blotting

**Image 1.** Western Blot Positive WB detected in: HeLa whole cell lysate, HepG2 whole cell lysate, U251 whole cell lysate, 293T whole cell lysate All lanes: CCT6A antibody at 4.2 µg/mL Secondary Goat polyclonal to rabbit IgG at 1/50000 dilution Predicted band size: 59, 54 kDa Observed band size: 54 kDa