



[Go to Product page](#)

Datasheet for ABIN7171458  
**anti-TIAM1 antibody (AA 52-224)**

2 Images

Overview

Quantity:	100 µg
Target:	TIAM1
Binding Specificity:	AA 52-224
Reactivity:	Human
Host:	Rabbit
Clonality:	Polyclonal
Conjugate:	This TIAM1 antibody is un-conjugated
Application:	ELISA, Immunohistochemistry (IHC), Immunofluorescence (IF)

Product Details

Immunogen:	Recombinant Human T-lymphoma invasion and metastasis-inducing protein 1 protein (52-224AA)
Isotype:	IgG
Cross-Reactivity:	Human
Purification:	>95%, Protein G purified

Target Details

Target:	TIAM1
Alternative Name:	TIAM1 ( <a href="#">TIAM1 Products</a> )
Background:	Background: Modulates the activity of RHO-like proteins and connects extracellular signals to

## Target Details

---

cytoskeletal activities. Acts as a GDP-dissociation stimulator protein that stimulates the GDP-GTP exchange activity of RHO-like GTPases and activates them. Activates RAC1, CDC42, and to a lesser extent RHOA. Required for normal cell adhesion and cell migration.

Aliases: Human T-lymphoma invasion and metastasis inducing TIAM1 protein antibody, T cell lymphoma invasion and metastasis 1 antibody, T lymphoma invasion and metastasis inducing TIAM1 protein antibody, T-lymphoma invasion and metastasis-inducing protein 1 antibody, TIAM-1 antibody, TIAM1 antibody, TIAM1\_HUMAN antibody

---

UniProt: [Q13009](#)

## Application Details

---

Application Notes: Recommended dilution: IHC:1:20-1:200, IF:1:50-1:200,

Restrictions: For Research Use only

## Handling

---

Format: Liquid

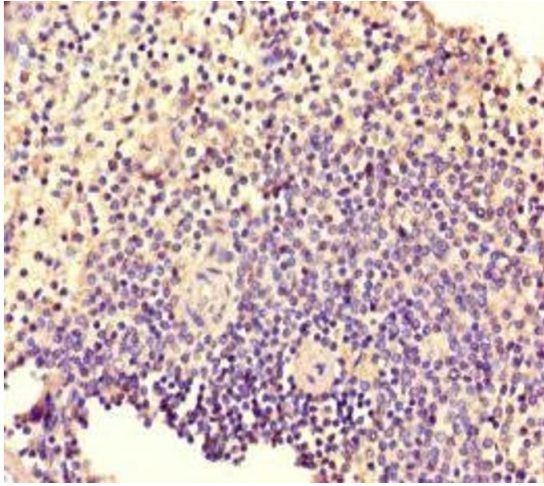
Buffer: Preservative: 0.03 % Proclin 300  
Constituents: 50 % Glycerol, 0.01M PBS, PH 7.4

Preservative: ProClin

Precaution of Use: This product contains ProClin: a POISONOUS AND HAZARDOUS SUBSTANCE which should be handled by trained staff only.

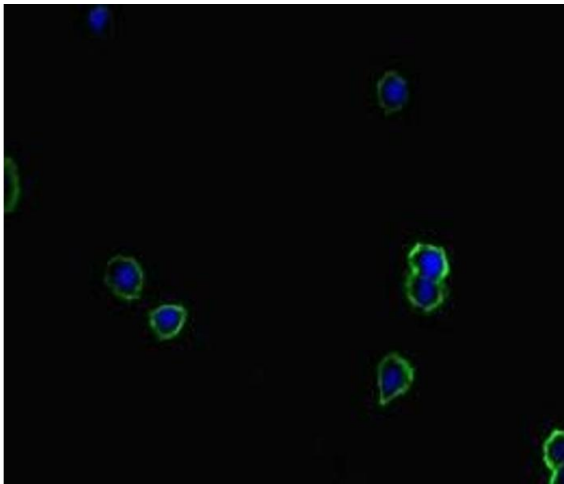
Storage: -20 °C,-80 °C

Storage Comment: Upon receipt, store at -20°C or -80°C. Avoid repeated freeze.



### Immunohistochemistry

**Image 1.** Immunohistochemistry of paraffin-embedded human spleen tissue using ABIN7171458 at dilution of 1:100



### Immunofluorescence

**Image 2.** Immunofluorescent analysis of HepG2 cells using ABIN7171458 at dilution of 1:100 and Alexa Fluor 488-conjugated AffiniPure Goat Anti-Rabbit IgG(H+L)