



[Go to Product page](#)

Datasheet for ABIN7171484  
**anti-TLN1 antibody (AA 92-399)**

2 Images

### Overview

Quantity:	100 µg
Target:	TLN1
Binding Specificity:	AA 92-399
Reactivity:	Human
Host:	Rabbit
Clonality:	Polyclonal
Conjugate:	This TLN1 antibody is un-conjugated
Application:	ELISA, Immunohistochemistry (IHC), Immunofluorescence (IF)

### Product Details

Immunogen:	Recombinant Human Talin-1 protein (92-399AA)
Isotype:	IgG
Cross-Reactivity:	Human
Purification:	>95%, Protein G purified

### Target Details

Target:	TLN1
Alternative Name:	TLN1 ( <a href="#">TLN1 Products</a> )
Background:	Background: Probably involved in connections of major cytoskeletal structures to the plasma membrane. High molecular weight cytoskeletal protein concentrated at regions of cell-

## Target Details

substratum contact and, in lymphocytes, at cell-cell contacts.

Aliases: ILWEQ antibody, Talin 1 antibody, Talin antibody, Talin-1 antibody, TLN 1 antibody, TLN antibody, Tln1 antibody, TLN1\_HUMAN antibody

UniProt: [Q9Y490](#)

Pathways: [Cell-Cell Junction Organization](#), [ER-Nucleus Signaling](#), [Maintenance of Protein Location](#)

## Application Details

Application Notes: Recommended dilution: IHC:1:200-1:500, IF:1:50-1:200,

Restrictions: For Research Use only

## Handling

Format: Liquid

Buffer: Preservative: 0.03 % Proclin 300  
Constituents: 50 % Glycerol, 0.01M PBS, PH 7.4

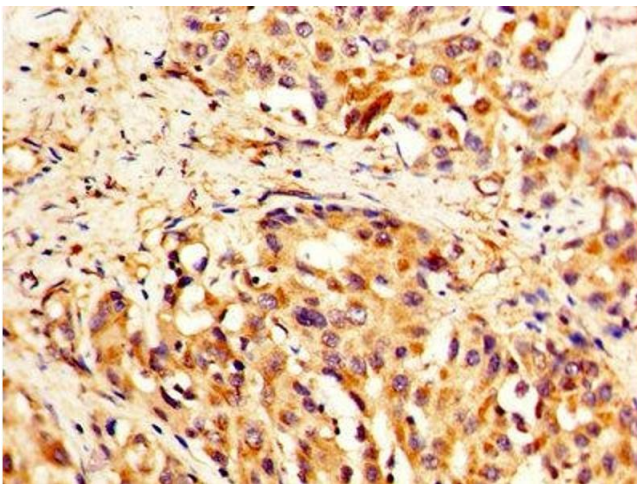
Preservative: ProClin

Precaution of Use: This product contains ProClin: a POISONOUS AND HAZARDOUS SUBSTANCE which should be handled by trained staff only.

Storage: -20 °C,-80 °C

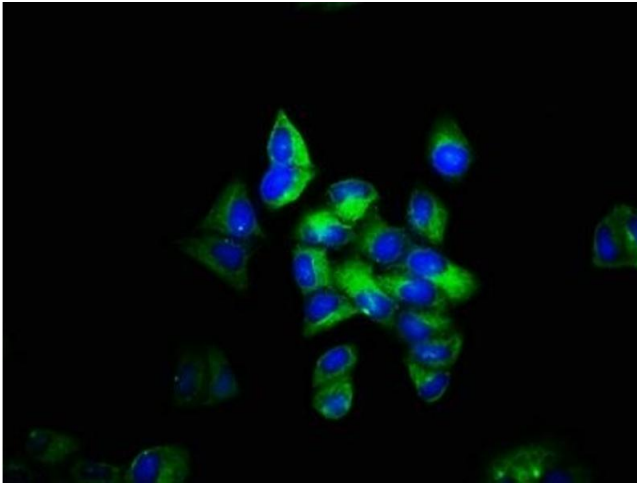
Storage Comment: Upon receipt, store at -20°C or -80°C. Avoid repeated freeze.

## Images



### Immunohistochemistry

**Image 1.** IHC image of ABIN7171484 diluted at 1:400 and staining in paraffin-embedded human liver cancer performed on a Leica Bond™ system. After dewaxing and hydration, antigen retrieval was mediated by high pressure in a citrate buffer (pH 6.0). Section was blocked with 10% normal goat serum 30min at RT. Then primary antibody (1% BSA) was incubated at 4°C overnight. The primary is detected by a biotinylated secondary antibody and visualized using an HRP conjugated SP system.



### Immunofluorescence

**Image 2.** Immunofluorescence staining of HeLa cells with ABIN7171484 at 1:133, counter-stained with DAPI. The cells were fixed in 4% formaldehyde, permeabilized using 0.2% Triton X-100 and blocked in 10% normal Goat Serum. The cells were then incubated with the antibody overnight at 4°C. The secondary antibody was Alexa Fluor 488-conjugated AffiniPure Goat Anti-Rabbit IgG(H+L).