



[Go to Product page](#)

Datasheet for ABIN7171535  
**anti-TAS1R3 antibody (AA 400-570)**

2 Images

Overview

|                      |  |
|----------------------|--|
| Quantity:            | 100 µL   |
| Target:              | TAS1R3   |
| Binding Specificity: | AA 400-570   |
| Reactivity:          | Human  |
| Host:                | Rabbit   |
| Clonality:           | Polyclonal   |
| Conjugate:           | This TAS1R3 antibody is un-conjugated                    |
| Application:         | Western Blotting (WB), ELISA, Immunohistochemistry (IHC) |

Product Details

|                   |  |
|-------------------|--|
| Immunogen:        | Recombinant Human Taste receptor type 1 member 3 protein (400-570AA) |
| Isotype:          | IgG  |
| Cross-Reactivity: | Human  |
| Purification:     | Antigen Affinity Purified  |

Target Details

|                   |   |
|-------------------|---|
| Target:           | TAS1R3  |
| Alternative Name: | TAS1R3 ( <a href="#">TAS1R3 Products</a> )  |
| Background:       | Background: Putative taste receptor. TAS1R1/TAS1R3 responds to the umami taste stimulus (the taste of monosodium glutamate). TAS1R2/TAS1R3 recognizes diverse natural and |

## Target Details

---

synthetic sweeteners. TAS1R3 is essential for the recognition and response to the disaccharide trehalose (By similarity). Sequence differences within and between species can significantly influence the selectivity and specificity of taste responses.

Aliases: G protein coupled receptor antibody, Sac antibody, Saccharin preference antibody, Sweet taste receptor T1R3 antibody, T1 R3 antibody, T1R 3 antibody, T1R3 antibody, TAS1 R3 antibody, TAS1R 3 antibody, TAS1R3 antibody, Taste receptor type 1 member 3 antibody, Taste receptor type 1 member 3 precursor antibody, TR 3 antibody, TR3 antibody, TS1R3\_HUMAN antibody

---

UniProt: [Q7RTX0](#)

## Application Details

---

Application Notes: Recommended dilution: WB:1:1000-1:5000, IHC:1:20-1:200,

Restrictions: For Research Use only

## Handling

---

Format: Liquid

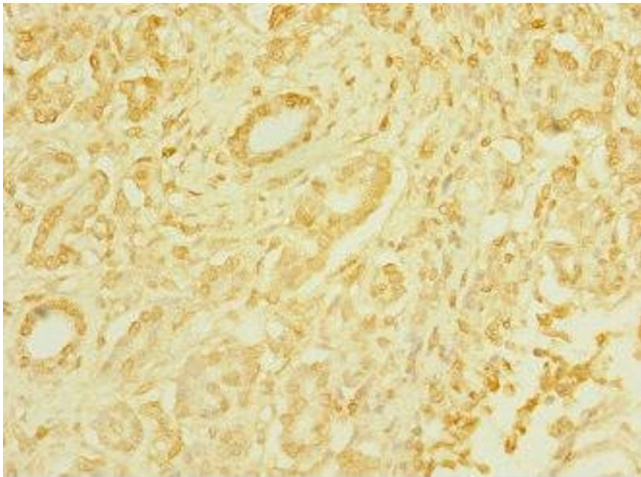
Buffer: PBS with 0.02 % sodium azide, 50 % glycerol, pH 7.3.

Preservative: Sodium azide

Precaution of Use: This product contains Sodium azide: a POISONOUS AND HAZARDOUS SUBSTANCE which should be handled by trained staff only.

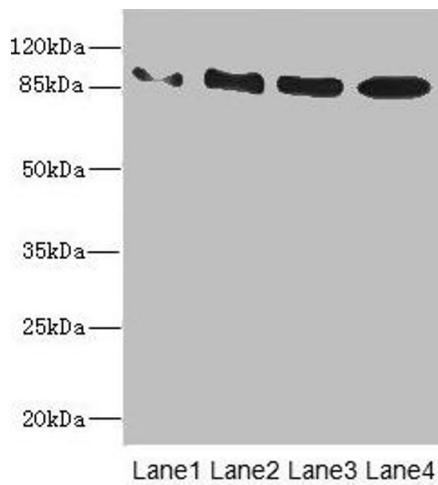
Storage: -20 °C,-80 °C

Storage Comment: Upon receipt, store at -20°C or -80°C. Avoid repeated freeze.



### Immunohistochemistry

**Image 1.** Immunohistochemistry of paraffin-embedded human pancreatic cancer using ABIN7171535 at dilution of 1:100



### Western Blotting

**Image 2.** Western blot All lanes: TAS1R3 antibody at 1.48  $\mu$ g/mL Lane 1: K562 whole cell lysate Lane 2: HL60 whole cell lysate Lane 3: Hela whole cell lysate Lane 4: HepG2 whole cell lysate Secondary Goat polyclonal to rabbit IgG at 1/10000 dilution Predicted band size: 94 kDa Observed band size: 94 kDa