



[Go to Product page](#)

Datasheet for ABIN7171560
anti-TAF1B antibody (AA 369-588)

2 Images

Overview

Quantity:	100 µL
Target:	TAF1B
Binding Specificity:	AA 369-588
Reactivity:	Human
Host:	Rabbit
Clonality:	Polyclonal
Conjugate:	This TAF1B antibody is un-conjugated
Application:	Western Blotting (WB), ELISA, Immunohistochemistry (IHC)

Product Details

Immunogen:	Recombinant Human TATA box-binding protein-associated factor RNA polymerase I subunit B protein (369-588AA)
Isotype:	IgG
Cross-Reactivity:	Human
Purification:	Antigen Affinity Purified

Target Details

Target:	TAF1B
Alternative Name:	TAF1B (TAF1B Products)
Background:	Background: Component of RNA polymerase I core factor complex that acts as a GTF2B/TFIIB-

Target Details

like factor and plays a key role in multiple steps during transcription initiation such as preinitiation complex (PIC) assembly and postpolymerase recruitment events in polymerase I (Pol I) transcription. Binds rDNA promoters and plays a role in Pol I recruitment as a component of the SL1/TIF-IB complex and, possibly, directly through its interaction with RRN3.

Aliases: TAF1B antibody, TATA box-binding protein-associated factor RNA polymerase I subunit B antibody, RNA polymerase I-specific TBP-associated factor 63 kDa antibody, TAFI63 antibody, TATA box-binding protein-associated factor 1B antibody, TBP-associated factor 1B antibody, Transcription initiation factor SL1/TIF-IB subunit B antibody

UniProt: [Q53T94](#)

Application Details

Application Notes: Recommended dilution: WB:1:200-1:1000, IHC:1:20-1:200,

Restrictions: For Research Use only

Handling

Format: Liquid

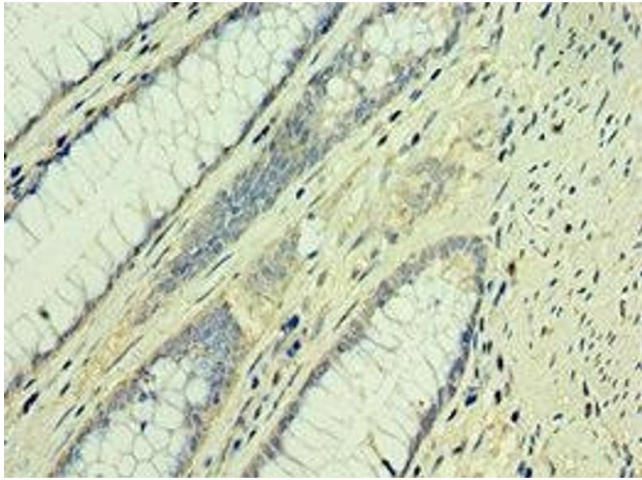
Buffer: PBS with 0.02 % sodium azide, 50 % glycerol, pH 7.3.

Preservative: Sodium azide

Precaution of Use: This product contains Sodium azide: a POISONOUS AND HAZARDOUS SUBSTANCE which should be handled by trained staff only.

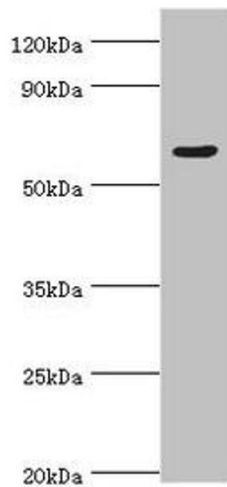
Storage: -20 °C,-80 °C

Storage Comment: Upon receipt, store at -20°C or -80°C. Avoid repeated freeze.



Immunohistochemistry

Image 1. Immunohistochemistry of paraffin-embedded human colon cancer using ABIN7171560 at dilution of 1:100



Western Blotting

Image 2. Western blot All lanes: TATA box-binding protein-associated factor RNA polymerase I subunit B antibody at 4 $\mu\text{g}/\text{mL}$ + HeLa whole cell lysate Secondary Goat polyclonal to rabbit IgG at 1/10000 dilution Predicted band size: 69, 61, 40 kDa Observed band size: 69 kDa