

Datasheet for ABIN7171561
anti-TAF1C antibody (AA 70-320)

3 Images

[Go to Product page](#)

Overview

| | |
|----------------------|--|
| Quantity: | 100 µL |
| Target: | TAF1C |
| Binding Specificity: | AA 70-320 |
| Reactivity: | Human |
| Host: | Rabbit |
| Clonality: | Polyclonal |
| Conjugate: | This TAF1C antibody is un-conjugated |
| Application: | Western Blotting (WB), Immunohistochemistry (IHC), ELISA |

Product Details

| | |
|-------------------|--|
| Immunogen: | Recombinant Human TATA box-binding protein-associated factor RNA polymerase I subunit C protein (70-320AA) |
| Isotype: | IgG |
| Cross-Reactivity: | Human |
| Purification: | Antigen Affinity Purified |

Target Details

| | |
|-------------------|--|
| Target: | TAF1C |
| Alternative Name: | TAF1C (TAF1C Products) |
| Background: | Background: Component of the transcription factor SL1/TIF-IB complex, which is involved in the |

Target Details

assembly of the PIC (preinitiation complex) during RNA polymerase I-dependent transcription. The rate of PIC formation probably is primarily dependent on the rate of association of SL1/TIF-IB with the rDNA promoter. SL1/TIF-IB is involved in stabilization of nucleolar transcription factor 1/UBTF on rDNA. Formation of SL1/TIF-IB excludes the association of TBP with TFIID subunits. Recruits RNA polymerase I to the rRNA gene promoter via interaction with RRN3. Aliases: RNA polymerase I-specific TBP-associated factor 110 kDa antibody, SL1 antibody, Taf1c antibody, TAF1C_HUMAN antibody, TAFI110 antibody, TAFI95 antibody, TATA box binding protein associated factor 1C antibody, TATA box-binding protein-associated factor 1C antibody, TATA box-binding protein-associated factor RNA polymerase I subunit C antibody, TBP associated factor 1C antibody, TBP associated factor RNA polymerase I 95 kDa antibody, TBP associated factor, RNA polymerase I, 110-KD antibody, TBP-associated factor 1C antibody, Transcription initiation factor SL1/TIF-IB subunit C antibody

UniProt: [Q15572](#)

Application Details

Application Notes: Recommended dilution: WB:1:500-1:2000, IHC:1:20-1:200,

Restrictions: For Research Use only

Handling

Format: Liquid

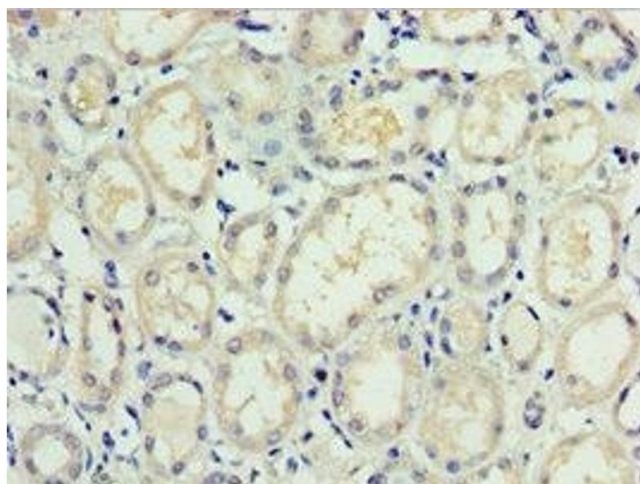
Buffer: PBS with 0.02 % sodium azide, 50 % glycerol, pH 7.3.

Preservative: Sodium azide

Precaution of Use: This product contains Sodium azide: a POISONOUS AND HAZARDOUS SUBSTANCE which should be handled by trained staff only.

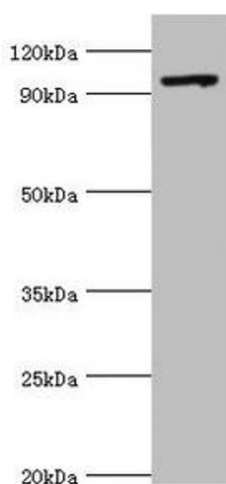
Storage: -20 °C,-80 °C

Storage Comment: Upon receipt, store at -20°C or -80°C. Avoid repeated freeze.



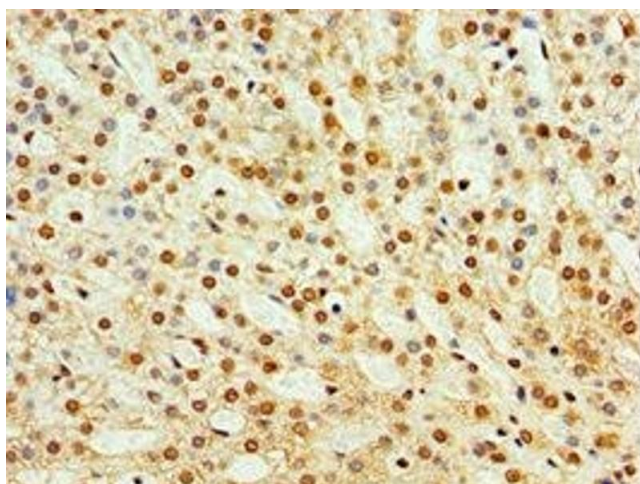
Immunohistochemistry

Image 1. Immunohistochemistry of paraffin-embedded human kidney tissue using ABIN7171561 at dilution of 1:100



Western Blotting

Image 2. Western blot All lanes: TAF1C antibody at 2 µg/mL + 293T whole cell lysate Secondary Goat polyclonal to rabbit IgG at 1/10000 dilution Predicted band size: 96, 85, 59, 50, 93 kDa Observed band size: 96 kDa



Immunohistochemistry

Image 3. Immunohistochemistry of paraffin-embedded human adrenal gland tissue using ABIN7171561 at dilution of 1:100