

Datasheet for ABIN7171567
anti-TBPL1 antibody (AA 1-186)



[Go to Product page](#)

2 Images

Overview

Quantity:	100 µL
Target:	TBPL1
Binding Specificity:	AA 1-186
Reactivity:	Human
Host:	Rabbit
Clonality:	Polyclonal
Conjugate:	This TBPL1 antibody is un-conjugated
Application:	ELISA, Immunohistochemistry (IHC)

Product Details

Immunogen:	Recombinant Human TATA box-binding protein-like protein 1 protein (1-186AA)
Isotype:	IgG
Cross-Reactivity:	Human
Purification:	Antigen Affinity Purified

Target Details

Target:	TBPL1
Alternative Name:	TBPL1 (TBPL1 Products)
Background:	Background: Part of a specialized transcription system that mediates the transcription of most ribosomal proteins through the 5'-'TCT-3'' motif which is a core promoter element at these

Target Details

genes. Seems to also mediate the transcription of NF1. Does not bind the TATA box.

Aliases: 21 kDa TBP-like protein antibody, 21 kDa TBP like protein antibody, Second TBP of unique DNA antibody, Second TBP of unique DNA protein antibody, STUD antibody, TATA box binding protein like protein 1 antibody, TATA box binding protein-related factor 2 antibody, TATA box-binding protein-like protein 1 antibody, TATA box-binding protein-related factor 2 antibody, TBP like 1 antibody, TBP like protein antibody, TBP related factor 2 antibody, TBP-like factor antibody, TBP-like protein 1 antibody, TBP-related factor 2 antibody, TBP-related protein antibody, tbpl1 antibody, TBPL1_HUMAN antibody, TLF antibody, TLP antibody, TRF2 antibody

UniProt: [P62380](#)

Application Details

Application Notes: Recommended dilution: IHC:1:20-1:200,

Restrictions: For Research Use only

Handling

Format: Liquid

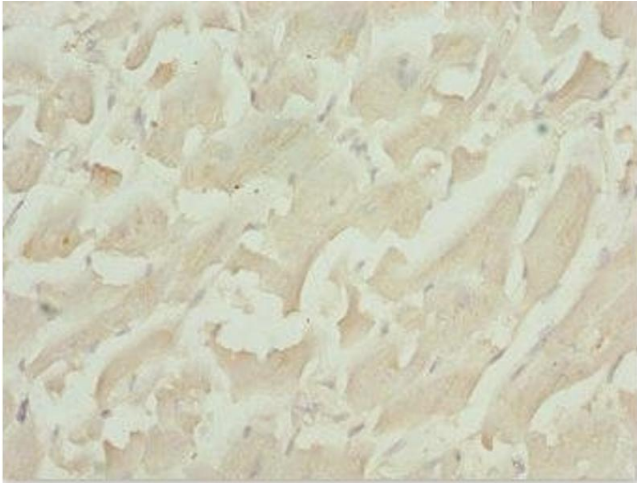
Buffer: PBS with 0.02 % sodium azide, 50 % glycerol, pH 7.3.

Preservative: Sodium azide

Precaution of Use: This product contains Sodium azide: a POISONOUS AND HAZARDOUS SUBSTANCE which should be handled by trained staff only.

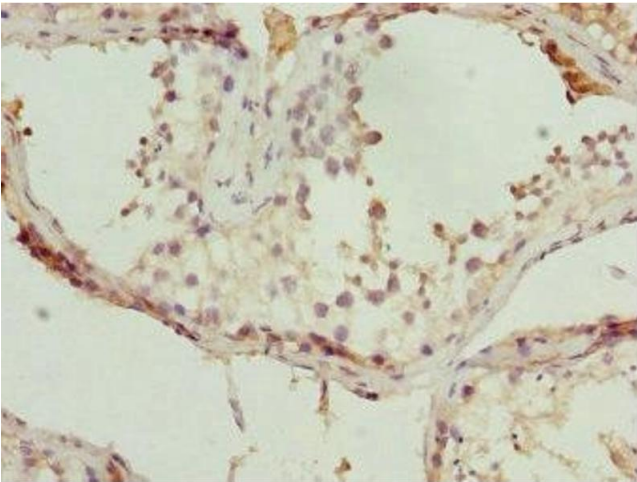
Storage: -20 °C,-80 °C

Storage Comment: Upon receipt, store at -20°C or -80°C. Avoid repeated freeze.



Immunohistochemistry

Image 1. Immunohistochemistry of paraffin-embedded human heart tissue using ABIN7171567 at dilution of 1:100



Immunohistochemistry

Image 2. Immunohistochemistry of paraffin-embedded human testis tissue using ABIN7171567 at dilution of 1:100