



[Go to Product page](#)

Datasheet for ABIN7171602
anti-TBC1D15 antibody (AA 283-404)

3 Images

Overview

Quantity:	100 µg
Target:	TBC1D15
Binding Specificity:	AA 283-404
Reactivity:	Human
Host:	Rabbit
Clonality:	Polyclonal
Conjugate:	This TBC1D15 antibody is un-conjugated
Application:	Western Blotting (WB), ELISA, Immunohistochemistry (IHC), Immunofluorescence (IF)

Product Details

Immunogen:	Recombinant Human TBC1 domain family member 15 protein (283-404AA)
Isotype:	IgG
Cross-Reactivity:	Human
Purification:	>95%, Protein G purified

Target Details

Target:	TBC1D15
Alternative Name:	TBC1D15 (TBC1D15 Products)
Background:	Background: Acts as a GTPase activating protein for RAB7A. Does not act on RAB4, RAB5 or RAB6 (By similarity).

Target Details

Aliases: DKFZp686M1379 antibody, DKFZp761D0223 antibody, FLJ12085 antibody, FLJ33191 antibody, GAP for RAB7 antibody, GTPase-activating protein RAB7 antibody, RAB7 GAP antibody, Rab7-GAP antibody, TBC1 domain family member 15 antibody, TBC15_HUMAN antibody, Tbc1d15 antibody, Tre 2 budding uninhibited by benzimidazole cell division cycle 16 domain, domain family member 15 antibody, Tre2/Bub2/Cdc16 domain family member 15 antibody

UniProt: [Q8TC07](#)

Application Details

Application Notes: Recommended dilution: WB:1:500-1:5000, IHC:1:20-1:200, IF:1:50-1:200,

Restrictions: For Research Use only

Handling

Format: Liquid

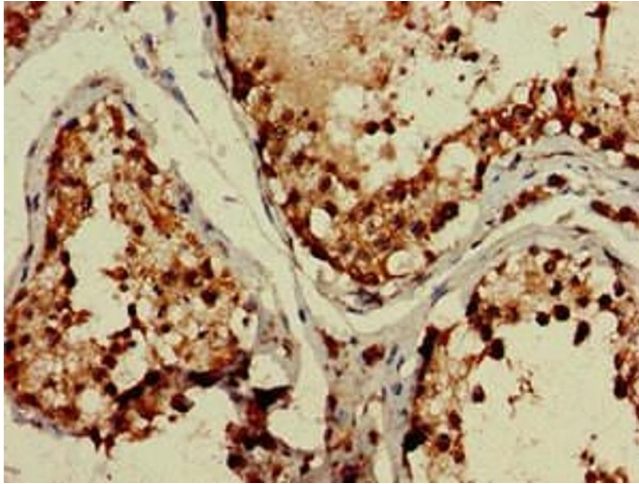
Buffer: Preservative: 0.03 % Proclin 300
Constituents: 50 % Glycerol, 0.01M PBS, pH 7.4

Preservative: ProClin

Precaution of Use: This product contains ProClin: a POISONOUS AND HAZARDOUS SUBSTANCE which should be handled by trained staff only.

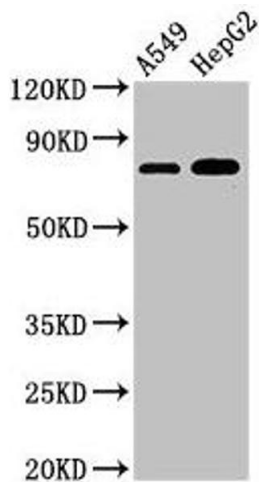
Storage: -20 °C,-80 °C

Storage Comment: Upon receipt, store at -20°C or -80°C. Avoid repeated freeze.



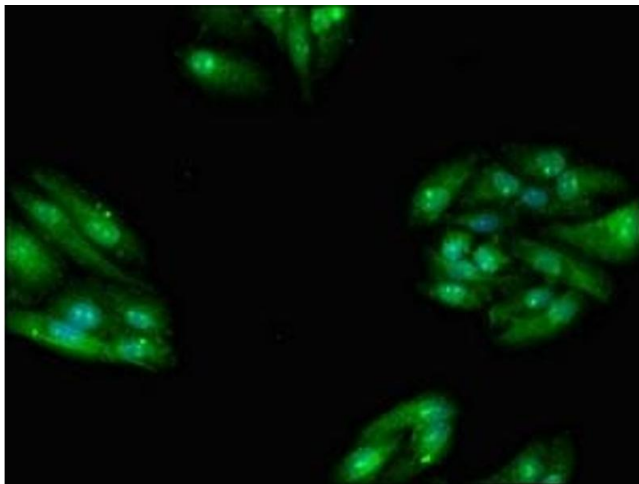
Immunohistochemistry

Image 1. Immunohistochemistry of paraffin-embedded human testis tissue using ABIN7171602 at dilution of 1:100



Western Blotting

Image 2. Western Blot Positive WB detected in: A549 whole cell lysate, HepG2 whole cell lysate All lanes: TBC1D15 antibody at 3 µg/mL Secondary Goat polyclonal to rabbit IgG at 1/50000 dilution Predicted band size: 80, 78, 79 kDa Observed band size: 80 kDa



Immunofluorescence

Image 3. Immunofluorescent analysis of HepG2 cells using ABIN7171602 at dilution of 1:100 and Alexa Fluor 488-conjugated AffiniPure Goat Anti-Rabbit IgG(H+L)