

Datasheet for ABIN7171614
anti-TBC1D22A antibody (AA 1-280)[Go to Product page](#)

1 Image

Overview

Quantity:	100 µg
Target:	TBC1D22A
Binding Specificity:	AA 1-280
Reactivity:	Human
Host:	Rabbit
Clonality:	Polyclonal
Conjugate:	This TBC1D22A antibody is un-conjugated
Application:	Western Blotting (WB), ELISA

Product Details

Immunogen:	Recombinant Human TBC1 domain family member 22A protein (1-280AA)
Isotype:	IgG
Cross-Reactivity:	Human, Rat
Purification:	>95%, Protein G purified

Target Details

Target:	TBC1D22A
Alternative Name:	TBC1D22A (TBC1D22A Products)
Background:	Background: May act as a GTPase-activating protein for Rab family protein(s). Aliases: TBC1D22A antibody, C22orf4 antibody, TBC1 domain family member 22A antibody

Target Details

UniProt: [Q8WUA7](#)

Application Details

Application Notes: Recommended dilution: WB:1:500-1:2000,

Restrictions: For Research Use only

Handling

Format: Liquid

Buffer: Preservative: 0.03 % Proclin 300
Constituents: 50 % Glycerol, 0.01M PBS, PH 7.4

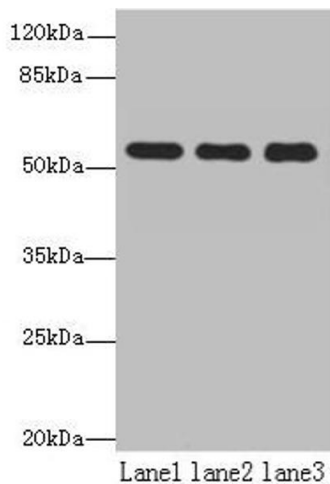
Preservative: ProClin

Precaution of Use: This product contains ProClin: a POISONOUS AND HAZARDOUS SUBSTANCE which should be handled by trained staff only.

Storage: -20 °C,-80 °C

Storage Comment: Upon receipt, store at -20°C or -80°C. Avoid repeated freeze.

Images



Western Blotting

Image 1. Western blot All lanes: TBC1D22A antibody at 18 µg/mL Lane 1: Colo320 whole cell lysate Lane 2: HepG2 whole cell lysate Lane 3: Rat skeletal muscle tissue Secondary Goat polyclonal to rabbit IgG at 1/10000 dilution Predicted band size: 60, 51, 37, 54 kDa Observed band size: 60 kDa