



[Go to Product page](#)

Datasheet for ABIN7171630
anti-TBC1D26 antibody (AA 1-250)

1 Image

Overview

Quantity:	100 µg
Target:	TBC1D26
Binding Specificity:	AA 1-250
Reactivity:	Human
Host:	Rabbit
Clonality:	Polyclonal
Conjugate:	This TBC1D26 antibody is un-conjugated
Application:	ELISA, Western Blotting (WB)

Product Details

Immunogen:	Recombinant Human TBC1 domain family member 26 protein (1-250AA)
Isotype:	IgG
Cross-Reactivity:	Human, Mouse
Purification:	>95%, Protein G purified

Target Details

Target:	TBC1D26
Alternative Name:	TBC1D26 (TBC1D26 Products)
Background:	Background: May act as a GTPase-activating protein for Rab family protein(s). Aliases: TBC1D26 antibody, TBC1 domain family member 26 antibody

Target Details

UniProt: [Q86UD7](#)

Application Details

Application Notes: Recommended dilution: WB:1:1000-1:5000,

Restrictions: For Research Use only

Handling

Format: Liquid

Buffer: Preservative: 0.03 % Proclin 300
Constituents: 50 % Glycerol, 0.01M PBS, PH 7.4

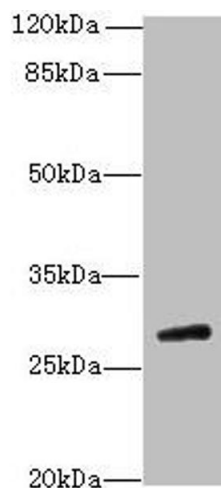
Preservative: ProClin

Precaution of Use: This product contains ProClin: a POISONOUS AND HAZARDOUS SUBSTANCE which should be handled by trained staff only.

Storage: -20 °C,-80 °C

Storage Comment: Upon receipt, store at -20°C or -80°C. Avoid repeated freeze.

Images



Western Blotting

Image 1. Western blot All lanes: TBC1D26 antibody at 3 μ g/mL + Mouse liver tissue Secondary Goat polyclonal to rabbit IgG at 1/10000 dilution Predicted band size: 29, 25, 10 kDa Observed band size: 29 kDa