



[Go to Product page](#)

Datasheet for ABIN7171680

anti-TECPR1 antibody (AA 199-487)

2 Images

Overview

Quantity:	100 µg
Target:	TECPR1
Binding Specificity:	AA 199-487
Reactivity:	Human
Host:	Rabbit
Clonality:	Polyclonal
Conjugate:	This TECPR1 antibody is un-conjugated
Application:	ELISA, Immunohistochemistry (IHC), Immunofluorescence (IF)

Product Details

Immunogen:	Recombinant Human Tectonin beta-propeller repeat-containing protein 1 protein (199-487AA)
Isotype:	IgG
Cross-Reactivity:	Human
Purification:	>95%, Protein G purified

Target Details

Target:	TECPR1
Alternative Name:	TECPR1 (TECPR1 Products)
Background:	Background: Tethering factor involved in autophagy. Involved in autophagosome maturation by promoting the autophagosome fusion with lysosomes: acts by associating with both the ATG5-

Target Details

ATG12 conjugate and phosphatidylinositol-3-phosphate (PtdIns(3)P) present at the surface of autophagosomes. Also involved in selective autophagy against bacterial pathogens, by being required for phagophore/preautophagosomal structure biogenesis and maturation.

Aliases: 2210010N04Rik antibody, DKFZP434B0335 antibody, FLJ23419 antibody, FLJ90593 antibody, KIAA1358 antibody, MGC124730 antibody, mKIAA1358 antibody, RGD1306873 antibody, TCPR1_HUMAN antibody, Tecpr1 antibody, tectonin beta propeller repeat containing 1 antibody, Tectonin beta-propeller repeat-containing protein 1 antibody

UniProt: [Q7Z6L1](#)

Application Details

Application Notes: Recommended dilution: IHC:1:20-1:200, IF:1:50-1:200,

Restrictions: For Research Use only

Handling

Format: Liquid

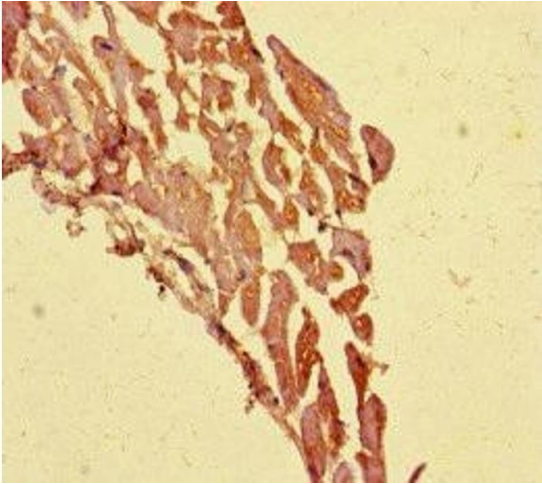
Buffer: Preservative: 0.03 % Proclin 300
Constituents: 50 % Glycerol, 0.01M PBS, PH 7.4

Preservative: ProClin

Precaution of Use: This product contains ProClin: a POISONOUS AND HAZARDOUS SUBSTANCE which should be handled by trained staff only.

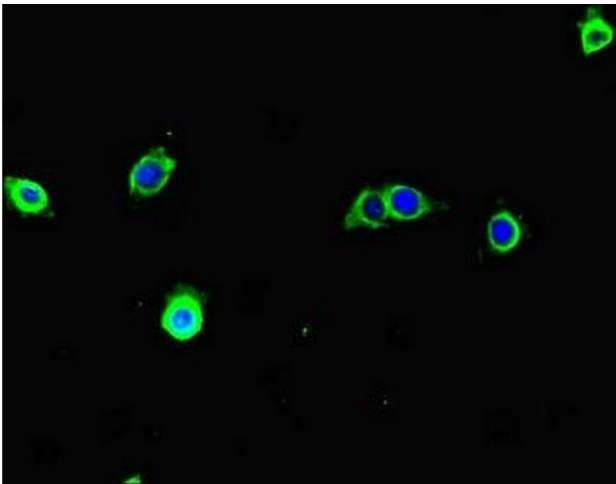
Storage: -20 °C,-80 °C

Storage Comment: Upon receipt, store at -20°C or -80°C. Avoid repeated freeze.



Immunohistochemistry

Image 1. Immunohistochemistry of paraffin-embedded human heart tissue using ABIN7171680 at dilution of 1:100



Immunofluorescence

Image 2. Immunofluorescent analysis of A375 cells using ABIN7171680 at dilution of 1:100 and Alexa Fluor 488-conjugated AffiniPure Goat Anti-Rabbit IgG(H+L)