

Datasheet for ABIN7171701
anti-TTI1 antibody (AA 692-858)

3 Images

[Go to Product page](#)

Overview

Quantity:	100 µg
Target:	TTI1
Binding Specificity:	AA 692-858
Reactivity:	Human
Host:	Rabbit
Clonality:	Polyclonal
Conjugate:	This TTI1 antibody is un-conjugated
Application:	ELISA, Immunohistochemistry (IHC), Immunofluorescence (IF)

Product Details

Immunogen:	Recombinant Human TELO2-interacting protein 1 homolog protein (692-858AA)
Isotype:	IgG
Cross-Reactivity:	Human
Purification:	>95%, Protein G purified

Target Details

Target:	TTI1
Alternative Name:	TTI1 (TTI1 Products)
Background:	Background: Regulator of the DNA damage response (DDR). Part of the TTT complex that is required to stabilize protein levels of the phosphatidylinositol 3-kinase-related protein kinase

Target Details

(PIKK) family proteins. The TTT complex is involved in the cellular resistance to DNA damage stresses, like ionizing radiation (IR), ultraviolet (UV) and mitomycin C (MMC). Together with the TTT complex and HSP90 may participate in the proper folding of newly synthesized PIKKs. Promotes assembly, stabilizes and maintains the activity of mTORC1 and mTORC2 complexes, which regulate cell growth and survival in response to nutrient and hormonal signals. Aliases: TT11 antibody, KIAA0406 antibody, SMG10 antibody, TEL02-interacting protein 1 homolog antibody, Protein SMG10 antibody

UniProt: [O43156](#)

Application Details

Application Notes: Recommended dilution: IHC:1:20-1:200, IF:1:50-1:200,

Restrictions: For Research Use only

Handling

Format: Liquid

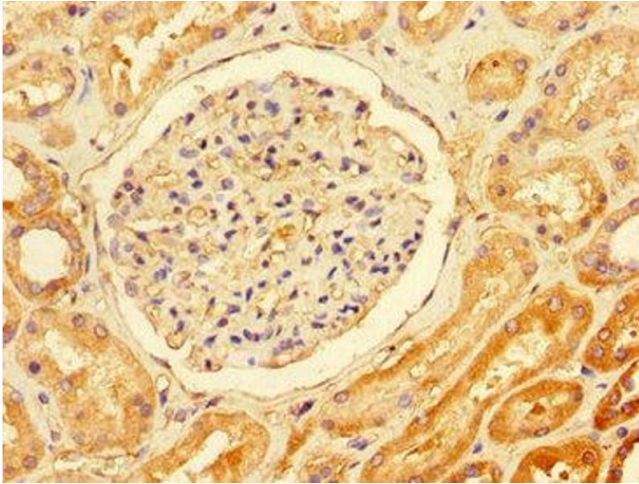
Buffer: Preservative: 0.03 % Proclin 300
Constituents: 50 % Glycerol, 0.01M PBS, PH 7.4

Preservative: ProClin

Precaution of Use: This product contains ProClin: a POISONOUS AND HAZARDOUS SUBSTANCE which should be handled by trained staff only.

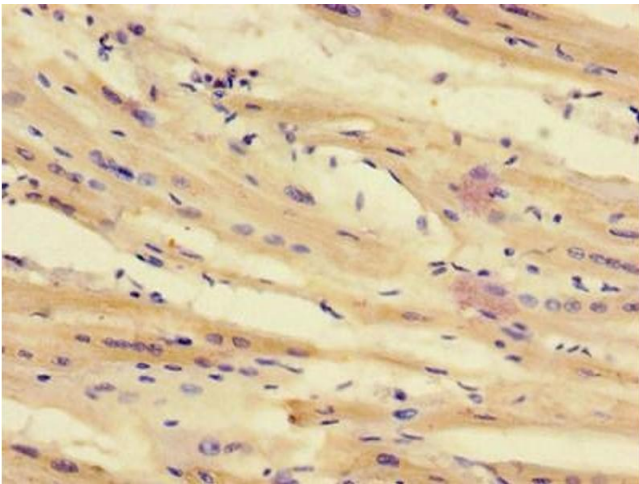
Storage: -20 °C,-80 °C

Storage Comment: Upon receipt, store at -20°C or -80°C. Avoid repeated freeze.



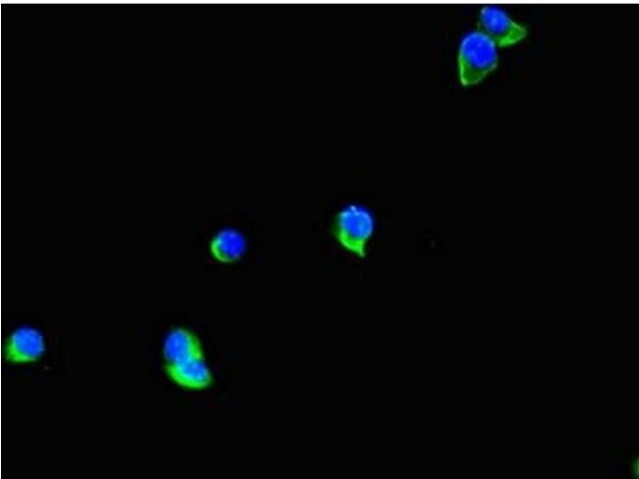
Immunohistochemistry

Image 1. Immunohistochemistry of paraffin-embedded human kidney tissue using ABIN7171701 at dilution of 1:100



Immunohistochemistry

Image 2. Immunohistochemistry of paraffin-embedded human heart tissue using ABIN7171701 at dilution of 1:100



Immunofluorescence

Image 3. Immunofluorescent analysis of HeLa cells using ABIN7171701 at dilution of 1:100 and Alexa Fluor 488-conjugated AffiniPure Goat Anti-Rabbit IgG(H+L)