



[Go to Product page](#)

Datasheet for ABIN7171728  
**anti-TRF1 antibody (AA 260-439)**

2 Images

Overview

|                      |  |
|----------------------|--|
| Quantity:            | 100 µL   |
| Target:              | TRF1 (TERF1)   |
| Binding Specificity: | AA 260-439   |
| Reactivity:          | Human  |
| Host:                | Rabbit   |
| Clonality:           | Polyclonal   |
| Conjugate:           | This TRF1 antibody is un-conjugated                      |
| Application:         | Western Blotting (WB), ELISA, Immunohistochemistry (IHC) |

Product Details

|                   |   |
|-------------------|---|
| Immunogen:        | Recombinant Human Telomeric repeat-binding factor 1 protein (260-439AA) |
| Isotype:          | IgG   |
| Cross-Reactivity: | Human   |
| Purification:     | Antigen Affinity Purified   |

Target Details

|                   |   |
|-------------------|---|
| Target:           | TRF1 (TERF1)  |
| Alternative Name: | TERF1 ( <a href="#">TERF1 Products</a> )  |
| Background:       | Background: Binds the telomeric double-stranded 5'-'TTAGGG-3'' repeat and negatively regulates telomere length. Involved in the regulation of the mitotic spindle. Component of the |

## Target Details

---

shelterin complex (telosome) that is involved in the regulation of telomere length and protection. Shelterin associates with arrays of double-stranded 5\'\'-TTAGGG-3\'\' repeats added by telomerase and protects chromosome ends, without its protective activity, telomeres are no longer hidden from the DNA damage surveillance and chromosome ends are inappropriately processed by DNA repair pathways.

Aliases: hTRF1 AS antibody, NIMA interacting protein 2 antibody, NIMA-interacting protein 2 antibody, PIN 2 antibody, PIN2 antibody, t TRF1 antibody, Telomeric protein Pin2 antibody, Telomeric protein Pin2/TRF1 antibody, Telomeric repeat binding factor (NIMA interacting) 1 antibody, Telomeric repeat binding factor 1 antibody, Telomeric repeat binding protein 1 antibody, Telomeric repeat-binding factor 1 antibody, TERF 1 antibody, Terf1 antibody, TERF1\_HUMAN antibody, TRBF 1 antibody, TRBF1 antibody, TRF 1 antibody, TRF antibody, TTAGGG repeat binding factor 1 antibody, TTAGGG repeat-binding factor 1 antibody

---

UniProt: [P54274](#)

---

Pathways: [Cell Division Cycle](#), [Telomere Maintenance](#), [Hormone Transport](#), [Chromatin Binding](#), [Regulation of Cell Size](#), [Positive Regulation of Endopeptidase Activity](#)

## Application Details

---

Application Notes: Recommended dilution: WB:1:200-1:1000, IHC:1:20-1:200,

---

Restrictions: For Research Use only

## Handling

---

Format: Liquid

---

Buffer: PBS with 0.02 % sodium azide, 50 % glycerol, pH 7.3.

---

Preservative: Sodium azide

---

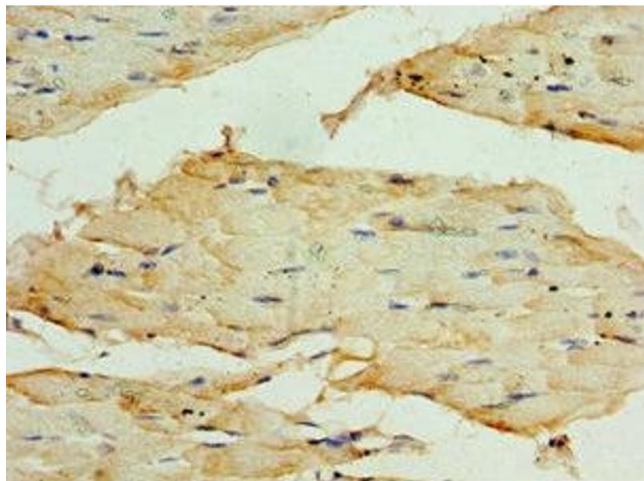
Precaution of Use: This product contains Sodium azide: a POISONOUS AND HAZARDOUS SUBSTANCE which should be handled by trained staff only.

---

Storage: -20 °C,-80 °C

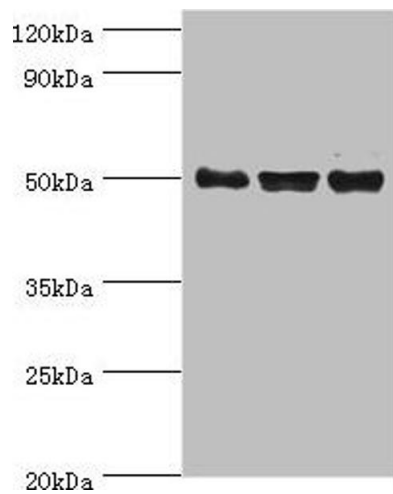
---

Storage Comment: Upon receipt, store at -20°C or -80°C. Avoid repeated freeze.



### Immunohistochemistry

**Image 1.** Immunohistochemistry of paraffin-embedded human skeletal muscle tissue using ABIN7171728 at dilution of 1:100



### Western Blotting

**Image 2.** Western blot All lanes: TERF1 antibody at 2  $\mu$ g/mL  
Lane 1: k562 whole cell lysate Lane 2: 293T whole cell lysate  
Lane 3: Jurkat whole cell lysate Secondary Goat polyclonal to rabbit IgG at 1/10000 dilution Predicted band size: 51, 49 kDa Observed band size: 51 kDa