



[Go to Product page](#)

Datasheet for ABIN7171850

anti-Tetraspanin 14 antibody (AA 114-215)

3 Images

Overview

Quantity:	100 µg
Target:	Tetraspanin 14 (TSPAN14)
Binding Specificity:	AA 114-215
Reactivity:	Human
Host:	Rabbit
Clonality:	Polyclonal
Conjugate:	This Tetraspanin 14 antibody is un-conjugated
Application:	ELISA, Immunohistochemistry (IHC), Immunofluorescence (IF)

Product Details

Immunogen:	Recombinant Human Tetraspanin-14 protein (114-215AA)
Isotype:	IgG
Cross-Reactivity:	Human
Purification:	>95%, Protein G purified

Target Details

Target:	Tetraspanin 14 (TSPAN14)
Alternative Name:	TSPAN14 (TSPAN14 Products)
Background:	Background: integral component of plasma membrane, plasma membrane, enzyme binding, establishment of protein localization to plasma membrane, positive regulation of Notch

Target Details

signaling pathway, protein maturation

Aliases: DC TM4F2 antibody, DC-TM4F2 antibody, tetraspanin 14 antibody, Tetraspanin similar to TM4SF9 antibody, Tetraspanin-14 antibody, TM4SF14 antibody, Transmembrane 4 superfamily member 14 antibody, TSN14_HUMAN antibody, Tspan 14 antibody, Tspan-14 antibody, TSPAN14 antibody

UniProt: [Q8NG11](#)

Application Details

Application Notes: Recommended dilution: IHC:1:20-1:200, IF:1:50-1:200,

Restrictions: For Research Use only

Handling

Format: Liquid

Buffer: Preservative: 0.03 % Proclin 300
Constituents: 50 % Glycerol, 0.01M PBS, PH 7.4

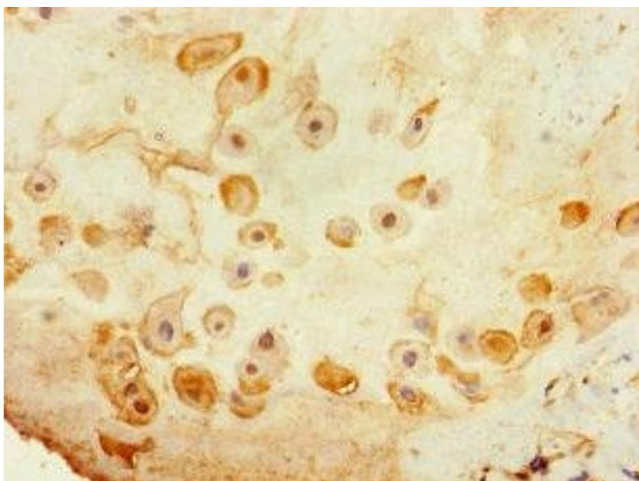
Preservative: ProClin

Precaution of Use: This product contains ProClin: a POISONOUS AND HAZARDOUS SUBSTANCE which should be handled by trained staff only.

Storage: -20 °C,-80 °C

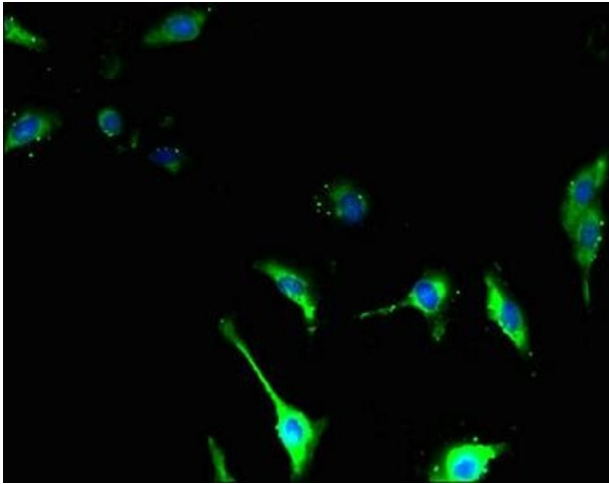
Storage Comment: Upon receipt, store at -20°C or -80°C. Avoid repeated freeze.

Images



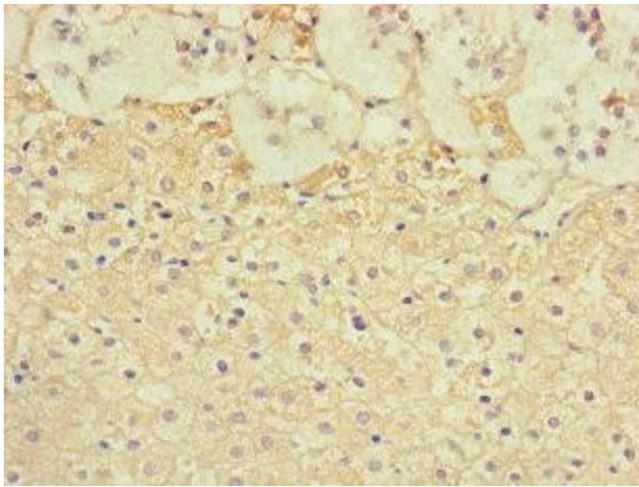
Immunohistochemistry

Image 1. Immunohistochemistry of paraffin-embedded human placenta tissue using ABIN7171850 at dilution of 1:100



Immunofluorescence

Image 2. Immunofluorescent analysis of U251 cells using ABIN7171850 at dilution of 1:100 and Alexa Fluor 488-conjugated AffiniPure Goat Anti-Rabbit IgG(H+L)



Immunohistochemistry

Image 3. Immunohistochemistry of paraffin-embedded human adrenal gland tissue using ABIN7171850 at dilution of 1:100