



[Go to Product page](#)

Datasheet for ABIN7171939
anti-TTC38 antibody (AA 2-200)

3 Images

Overview

Quantity:	100 µg
Target:	TTC38
Binding Specificity:	AA 2-200
Reactivity:	Human
Host:	Rabbit
Clonality:	Polyclonal
Conjugate:	This TTC38 antibody is un-conjugated
Application:	ELISA, Immunohistochemistry (IHC), Western Blotting (WB)

Product Details

Immunogen:	Recombinant Human Tetratricopeptide repeat protein 38 protein (2-200AA)
Isotype:	IgG
Cross-Reactivity:	Human, Mouse
Purification:	Antigen Affinity Purified

Target Details

Target:	TTC38
Alternative Name:	TTC38 (TTC38 Products)
Background:	LL22NC03-5H6.5 antibody, Tetratricopeptide repeat protein 38 antibody, TPR repeat protein 38 antibody, TTC38 antibody, TTC38_HUMAN antibody

Target Details

UniProt: [Q5R3I4](#)

Application Details

Application Notes: Recommended dilution: WB:1:500-1:2000, IHC:1:20-1:200,

Restrictions: For Research Use only

Handling

Format: Liquid

Buffer: Preservative: 0.03 % Proclin 300
Constituents: 50 % Glycerol, 0.01M PBS, PH 7.4

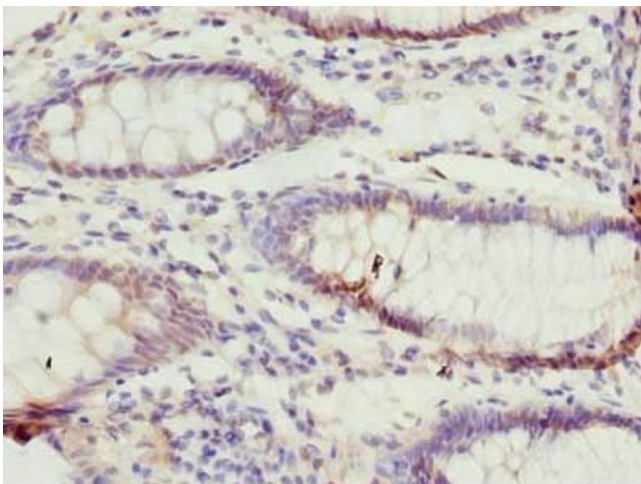
Preservative: ProClin

Precaution of Use: This product contains ProClin: a POISONOUS AND HAZARDOUS SUBSTANCE which should be handled by trained staff only.

Storage: -20 °C,-80 °C

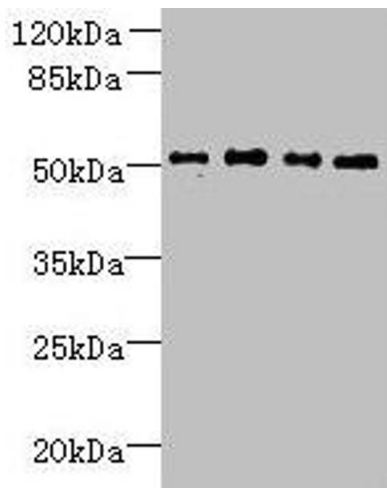
Storage Comment: Upon receipt, store at -20°C or -80°C. Avoid repeated freeze.

Images



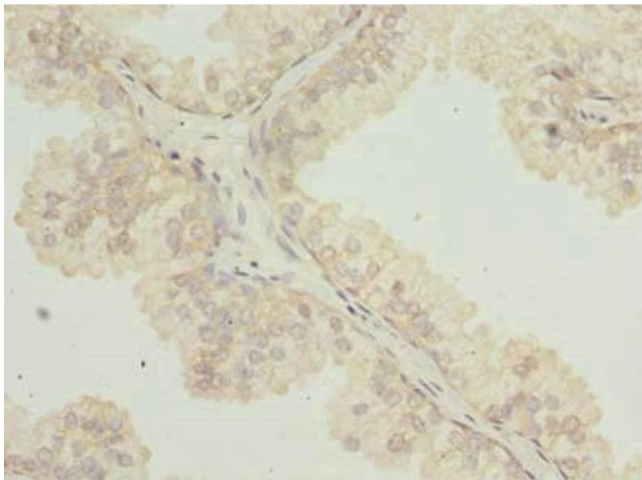
Immunohistochemistry

Image 1. Immunohistochemistry of paraffin-embedded human colon cancer using ABIN7171939 at dilution of 1:100



Western Blotting

Image 2. Western blot All lanes: TTC38 antibody at 1.5 μ g/mL Lane 1: U251 whole cell lysate Lane 2: Mouse liver tissue Lane 3: HepG2 whole cell lysate Lane 4: K562 whole cell lysate Secondary Goat polyclonal to rabbit IgG at 1/10000 dilution Predicted band size: 53 kDa Observed band size: 53 kDa



Immunohistochemistry

Image 3. Immunohistochemistry of paraffin-embedded human prostate cancer using ABIN7171939 at dilution of 1:100