

Datasheet for ABIN7171980
anti-SLC19A2 antibody (AA 209-285)[Go to Product page](#)

2 Images

Overview

Quantity:	100 µg
Target:	SLC19A2
Binding Specificity:	AA 209-285
Reactivity:	Human
Host:	Rabbit
Clonality:	Polyclonal
Conjugate:	This SLC19A2 antibody is un-conjugated
Application:	ELISA, Immunohistochemistry (IHC)

Product Details

Immunogen:	Recombinant Human Thiamine transporter 1 protein (209-285AA)
Isotype:	IgG
Cross-Reactivity:	Human
Purification:	>95%, Protein G purified

Target Details

Target:	SLC19A2
Alternative Name:	SLC19A2 (SLC19A2 Products)
Background:	Background: High-affinity transporter for the intake of thiamine. Aliases: S19A2_HUMAN antibody, SLC19A2 antibody, Solute carrier family 19 member 2

Target Details

antibody, TC1 antibody, Thiamine carrier 1 antibody, Thiamine transporter 1 antibody, THT1 antibody, ThTr 1 antibody, ThTr-1 antibody, ThTr1 antibody, TRMA antibody

UniProt: [O60779](#)

Pathways: [Dicarboxylic Acid Transport](#)

Application Details

Application Notes: Recommended dilution: IHC:1:200-1:500,

Restrictions: For Research Use only

Handling

Format: Liquid

Buffer: Preservative: 0.03 % Proclin 300
Constituents: 50 % Glycerol, 0.01M PBS, pH 7.4

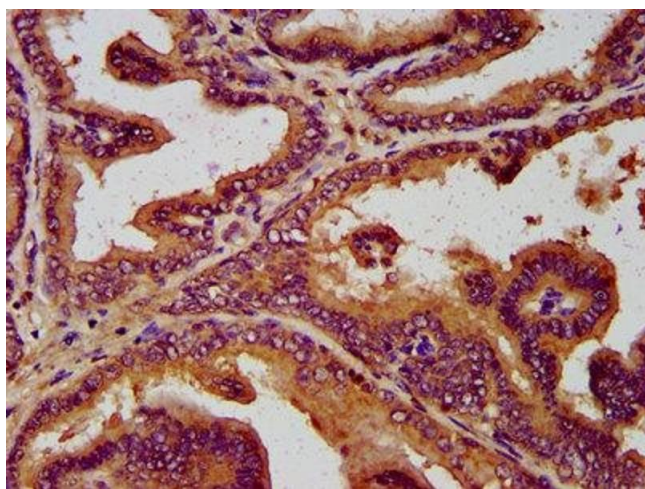
Preservative: ProClin

Precaution of Use: This product contains ProClin: a POISONOUS AND HAZARDOUS SUBSTANCE which should be handled by trained staff only.

Storage: -20 °C,-80 °C

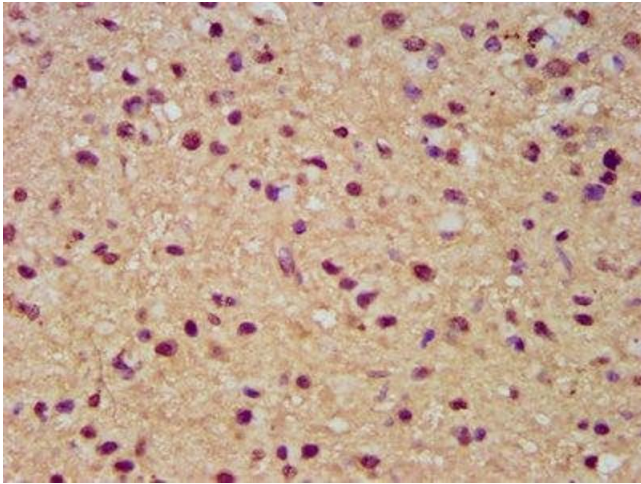
Storage Comment: Upon receipt, store at -20°C or -80°C. Avoid repeated freeze.

Images



Immunohistochemistry

Image 1. IHC image of ABIN7171980 diluted at 1:300 and staining in paraffin-embedded human prostate tissue performed on a Leica Bond™ system. After dewaxing and hydration, antigen retrieval was mediated by high pressure in a citrate buffer (pH 6.0). Section was blocked with 10% normal goat serum 30min at RT. Then primary antibody (1% BSA) was incubated at 4°C overnight. The primary is detected by a biotinylated secondary antibody and visualized using an HRP conjugated SP system.



Immunohistochemistry

Image 2. IHC image of ABIN7171980 diluted at 1:300 and staining in paraffin-embedded human glioma performed on a Leica Bond™ system. After dewaxing and hydration, antigen retrieval was mediated by high pressure in a citrate buffer (pH 6.0). Section was blocked with 10% normal goat serum 30min at RT. Then primary antibody (1% BSA) was incubated at 4°C overnight. The primary is detected by a biotinylated secondary antibody and visualized using an HRP conjugated SP system.