

Datasheet for ABIN7171984  
**anti-SLC19A3 antibody (AA 191-282)**[Go to Product page](#)

## 2 Images

## Overview

Quantity:	100 µg
Target:	SLC19A3 (Slc19a3)
Binding Specificity:	AA 191-282
Reactivity:	Human
Host:	Rabbit
Clonality:	Polyclonal
Conjugate:	This SLC19A3 antibody is un-conjugated
Application:	Western Blotting (WB), ELISA, Immunofluorescence (IF)

## Product Details

Immunogen:	Recombinant Human Thiamine transporter 2 protein (191-282AA)
Isotype:	IgG
Cross-Reactivity:	Human
Purification:	>95%, Protein G purified

## Target Details

Target:	SLC19A3 (Slc19a3)
Alternative Name:	SLC19A3 ( <a href="#">Slc19a3 Products</a> )
Background:	Background: Mediates high affinity thiamine uptake, probably via a proton anti-port mechanism. Has no folate transport activity.

## Target Details

Aliases: SLC19A3Thiamine transporter 2 antibody, ThTr-2 antibody, ThTr2 antibody, Solute carrier family 19 member 3 antibody

UniProt: [Q9BZV2](#)

Pathways: [Dicarboxylic Acid Transport](#)

## Application Details

Application Notes: Recommended dilution: WB:1:500-1:5000, IF:1:50-1:200,

Restrictions: For Research Use only

## Handling

Format: Liquid

Buffer: Preservative: 0.03 % Proclin 300  
Constituents: 50 % Glycerol, 0.01M PBS, pH 7.4

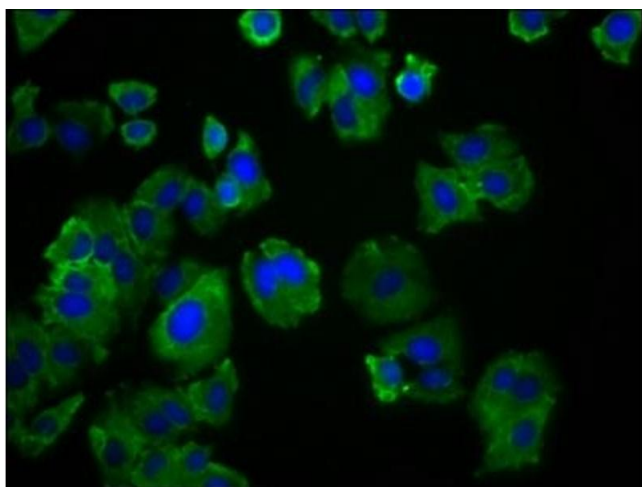
Preservative: ProClin

Precaution of Use: This product contains ProClin: a POISONOUS AND HAZARDOUS SUBSTANCE which should be handled by trained staff only.

Storage: -20 °C,-80 °C

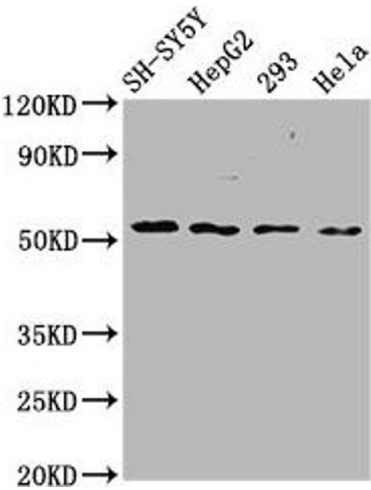
Storage Comment: Upon receipt, store at -20°C or -80°C. Avoid repeated freeze.

## Images



### Immunofluorescence

**Image 1.** Immunofluorescence staining of HepG2 cells with ABIN7171984 at 1:166, counter-stained with DAPI. The cells were fixed in 4% formaldehyde, permeabilized using 0.2% Triton X-100 and blocked in 10% normal Goat Serum. The cells were then incubated with the antibody overnight at 4°C. The secondary antibody was Alexa Fluor 488-conjugated AffiniPure Goat Anti-Rabbit IgG(H+L).



Western Blotting

**Image 2.** Western Blot Positive WB detected in: SH-SY5Y whole cell lysate, HepG2 whole cell lysate, 293 whole cell lysate, HeLa whole cell lysate All lanes: SLC19A3 antibody at 3.6 µg/mL Secondary Goat polyclonal to rabbit IgG at 1/50000 dilution Predicted band size: 56 kDa Observed band size: 56 kDa