

Datasheet for ABIN7172051

anti-THO Complex 3 antibody (AA 2-351)[Go to Product page](#)**1** Image

Overview

Quantity:	100 µg
Target:	THO Complex 3 (THOC3)
Binding Specificity:	AA 2-351
Reactivity:	Human
Host:	Rabbit
Clonality:	Polyclonal
Conjugate:	This THO Complex 3 antibody is un-conjugated
Application:	ELISA, Immunohistochemistry (IHC)

Product Details

Immunogen:	Recombinant Human THO complex subunit 3 protein (2-351AA)
Isotype:	IgG
Cross-Reactivity:	Human
Purification:	>95%, Protein G purified

Target Details

Target:	THO Complex 3 (THOC3)
Alternative Name:	THOC3 (THOC3 Products)
Background:	Background: Required for efficient export of polyadenylated RNA and spliced mRNA. Acts as component of the THO subcomplex of the TREX complex which is thought to couple mRNA

Target Details

transcription, processing and nuclear export, and which specifically associates with spliced mRNA and not with unspliced pre-mRNA. TREX is recruited to spliced mRNAs by a transcription-independent mechanism, binds to mRNA upstream of the exon-junction complex (EJC) and is recruited in a splicing- and cap-dependent manner to a region near the 5' end of the mRNA where it functions in mRNA export to the cytoplasm via the TAP/NFX1 pathway. The TREX complex is essential for the export of Kaposi's sarcoma-associated herpesvirus (KSHV) intronless mRNAs and infectious virus production.

Aliases: hTREX45 antibody, TEX1 homolog antibody, THO complex subunit 3 antibody, Tho3 antibody, THOC3 antibody, THOC3_HUMAN antibody

UniProt: [Q96J01](#)

Application Details

Application Notes: Recommended dilution: IHC:1:20-1:200,

Restrictions: For Research Use only

Handling

Format: Liquid

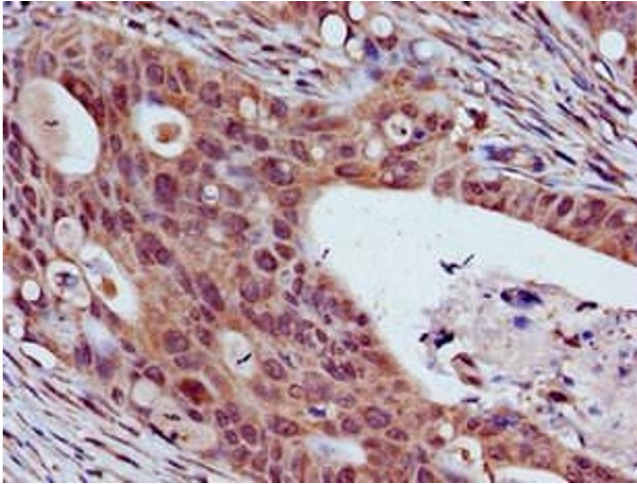
Buffer: Preservative: 0.03 % Proclin 300
Constituents: 50 % Glycerol, 0.01M PBS, PH 7.4

Preservative: ProClin

Precaution of Use: This product contains ProClin: a POISONOUS AND HAZARDOUS SUBSTANCE which should be handled by trained staff only.

Storage: -20 °C,-80 °C

Storage Comment: Upon receipt, store at -20°C or -80°C. Avoid repeated freeze.



Immunohistochemistry

Image 1. Immunohistochemistry of paraffin-embedded human colon cancer using ABIN7172051 at dilution of 1:100