



[Go to Product page](#)

Datasheet for ABIN7172055

anti-THO Complex 4 antibody (AA 186-240)

2 Images

Overview

| | |
|----------------------|--|
| Quantity: | 100 µg |
| Target: | THO Complex 4 (THOC4) |
| Binding Specificity: | AA 186-240 |
| Reactivity: | Human |
| Host: | Rabbit |
| Clonality: | Polyclonal |
| Conjugate: | This THO Complex 4 antibody is un-conjugated |
| Application: | ELISA, Immunohistochemistry (IHC), Immunofluorescence (IF) |

Product Details

| | |
|-------------------|---|
| Immunogen: | Recombinant Human THO complex subunit 4 protein (186-240AA) |
| Isotype: | IgG |
| Cross-Reactivity: | Human |
| Purification: | >95%, Protein G purified |

Target Details

| | |
|-------------------|---|
| Target: | THO Complex 4 (THOC4) |
| Alternative Name: | ALYREF (THOC4 Products) |
| Background: | Background: Export adapter involved in nuclear export of spliced and unspliced mRNA. Binds mRNA which is thought to be transferred to the NXF1-NXT1 heterodimer for export (TAP/NFX1) |

Target Details

pathway). Component of the TREX complex which is thought to couple mRNA transcription, processing and nuclear export, and specifically associates with spliced mRNA and not with unspliced pre-mRNA. TREX is recruited to spliced mRNAs by a transcription-independent mechanism, binds to mRNA upstream of the exon-junction complex (EJC) and is recruited in a splicing- and cap-dependent manner to a region near the 5' end of the mRNA where it functions in mRNA export to the cytoplasm. TREX recruitment occurs via an interaction between ALYREF/THOC4 and the cap-binding protein NCBP1. The TREX complex is essential for the export of Kaposi's sarcoma-associated herpesvirus (KSHV) intronless mRNAs and infectious virus production, ALYREF/THOC4 mediates the recruitment of the TREX complex to the intronless viral mRNA. Required for TREX complex assembly and for linking DDX39B to the cap-binding complex (CBC). In conjunction with THOC5 functions in NXF1-NXT1 mediated nuclear export of HSP70 mRNA, both proteins enhance the RNA binding activity of NXF1 and are required for NXF1 localization to the nuclear rim. Involved in the nuclear export of intronless mRNA, proposed to be recruited to intronless mRNA by ATP-bound DDX39B. Involved in transcription elongation and genome stability.

Aliases: Ally of AML-1 and LEF-1 antibody, Ally of AML1 and LEF1 antibody, ALY antibody, ALY/REF antibody, Aly/REF export factor antibody, BEF antibody, bZIP enhancing factor antibody, bZIP-enhancing factor BEF antibody, REF antibody, THO complex 4 antibody, THO complex subunit 4 antibody, Tho4 antibody, thoc4 antibody, THOC4_HUMAN antibody, Transcriptional coactivator Aly/REF antibody, Transcriptional coactivator antibody

UniProt: [Q86V81](#)

Application Details

Application Notes: Recommended dilution: IHC:1:20-1:200, IF:1:50-1:200,

Restrictions: For Research Use only

Handling

Format: Liquid

Buffer: Preservative: 0.03 % Proclin 300
Constituents: 50 % Glycerol, 0.01M PBS, pH 7.4

Preservative: ProClin

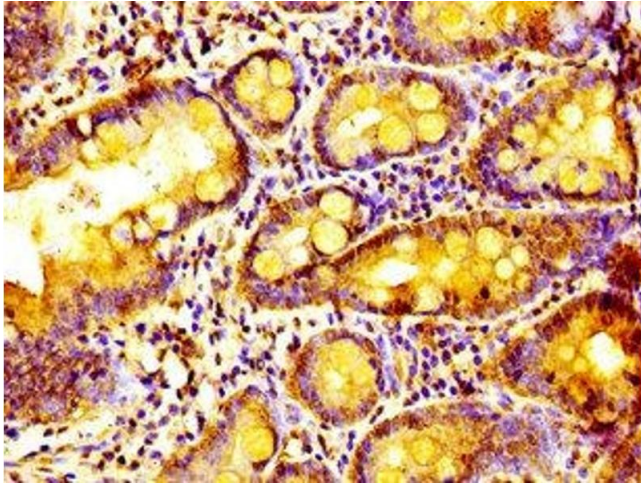
Precaution of Use: This product contains ProClin: a POISONOUS AND HAZARDOUS SUBSTANCE which should be handled by trained staff only.

Handling

Storage: -20 °C,-80 °C

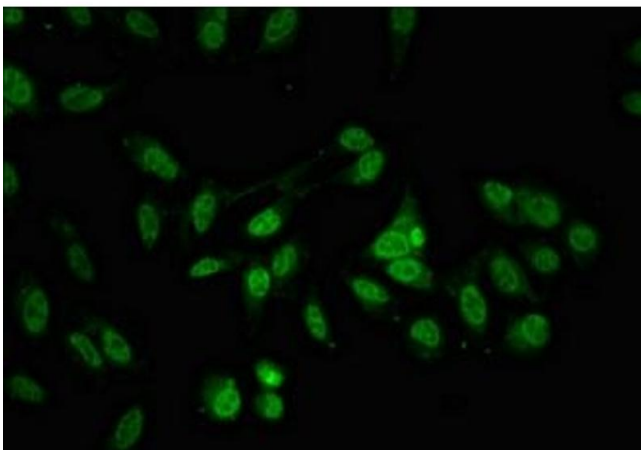
Storage Comment: Upon receipt, store at -20°C or -80°C. Avoid repeated freeze.

Images



Immunohistochemistry

Image 1. Immunohistochemistry of paraffin-embedded human small intestine tissue using ABIN7172055 at dilution of 1:100



Immunofluorescence

Image 2. Immunofluorescent analysis of HeLa cells using ABIN7172055 at dilution of 1:100 and Alexa Fluor 488-conjugated AffiniPure Goat Anti-Rabbit IgG(H+L)