

Datasheet for ABIN7172148
anti-THRA antibody (AA 1-490)[Go to Product page](#)

3 Images

Overview

Quantity:	100 µg
Target:	THRA
Binding Specificity:	AA 1-490
Reactivity:	Human
Host:	Rabbit
Clonality:	Polyclonal
Conjugate:	This THRA antibody is un-conjugated
Application:	Western Blotting (WB), ELISA, Immunohistochemistry (IHC)

Product Details

Immunogen:	Recombinant Human Thyroid hormone receptor alpha protein (1-490AA)
Isotype:	IgG
Cross-Reactivity:	Human
Purification:	>95%, Protein G purified

Target Details

Target:	THRA
Alternative Name:	THRA (THRA Products)
Background:	Background: Nuclear hormone receptor that can act as a repressor or activator of transcription. High affinity receptor for thyroid hormones, including triiodothyronine and thyroxine.

Target Details

Aliases: c-erbA-1 antibody, C-erbA-alpha antibody, EAR-7 antibody, ERBA 1 antibody, ERBA antibody, ERBA related 7 antibody, Nuclear receptor subfamily 1 group A member 1 antibody, THA_HUMAN antibody, THRA antibody, Thra1 antibody, Thra2 antibody, Thyroid hormone receptor alpha 1 antibody, Thyroid hormone receptor alpha 2 antibody, Thyroid hormone receptor alpha antibody, TR alpha 1 antibody, TR alpha 2 antibody, Tra1 antibody, Triiodothyronine receptor antibody, V-erbA-related protein 7 antibody

UniProt: [P10827](#)

Pathways: [Nuclear Receptor Transcription Pathway](#), [Steroid Hormone Mediated Signaling Pathway](#), [Sensory Perception of Sound](#), [Cellular Response to Molecule of Bacterial Origin](#), [Regulation of Lipid Metabolism by PPARalpha](#), [Regulation of Muscle Cell Differentiation](#), [Maintenance of Protein Location](#), [Skeletal Muscle Fiber Development](#)

Application Details

Application Notes: Recommended dilution: WB:1:1000-1:5000, IHC:1:20-1:200,

Restrictions: For Research Use only

Handling

Format: Liquid

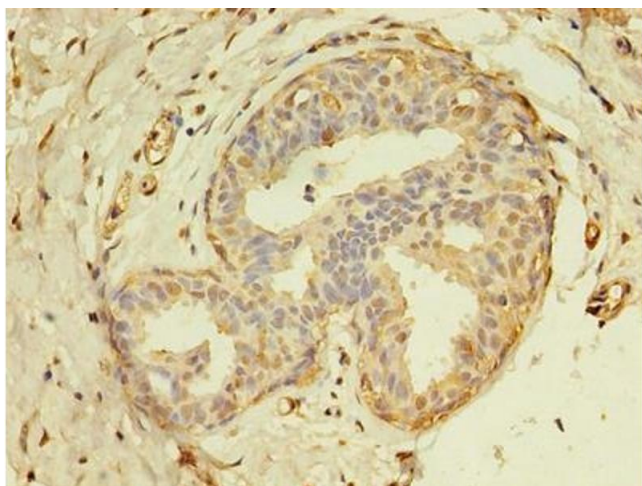
Buffer: Preservative: 0.03 % Proclin 300
Constituents: 50 % Glycerol, 0.01M PBS, PH 7.4

Preservative: ProClin

Precaution of Use: This product contains ProClin: a POISONOUS AND HAZARDOUS SUBSTANCE which should be handled by trained staff only.

Storage: -20 °C,-80 °C

Storage Comment: Upon receipt, store at -20°C or -80°C. Avoid repeated freeze.



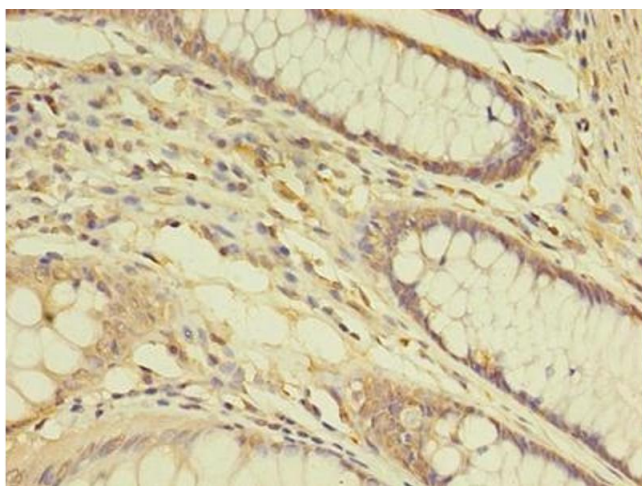
Immunohistochemistry

Image 1. Immunohistochemistry of paraffin-embedded human breast cancer using ABIN7172148 at dilution of 1:100



Western Blotting

Image 2. Western blot All lanes: THRA antibody at 2 µg/mL + A431 whole cell lysate Secondary Goat polyclonal to rabbit IgG at 1/10000 dilution Predicted band size: 55, 47, 51 kDa Observed band size: 55 kDa



Immunohistochemistry

Image 3. Immunohistochemistry of paraffin-embedded human colon cancer using ABIN7172148 at dilution of 1:100