

Datasheet for ABIN7172247
anti-TRAF6 antibody (AA 1-522)

3 Images

[Go to Product page](#)

Overview

Quantity:	100 µg
Target:	TRAF6
Binding Specificity:	AA 1-522
Reactivity:	Human
Host:	Rabbit
Clonality:	Polyclonal
Conjugate:	This TRAF6 antibody is un-conjugated
Application:	ELISA, Immunohistochemistry (IHC), Immunofluorescence (IF)

Product Details

Immunogen:	Recombinant Human TNF receptor-associated factor 6 protein (1-522AA)
Isotype:	IgG
Cross-Reactivity:	Human
Purification:	>95%, Protein G purified

Target Details

Target:	TRAF6
Alternative Name:	TRAF6 (TRAF6 Products)
Background:	Background: E3 ubiquitin ligase that, together with UBE2N and UBE2V1, mediates the synthesis of 'Lys-63'-linked-polyubiquitin chains conjugated to proteins, such as IKBKG, IRAK1, AKT1

Target Details

and AKT2. Also mediates ubiquitination of free/unanchored polyubiquitin chain that leads to MAP3K7 activation. Leads to the activation of NF-kappa-B and JUN. May be essential for the formation of functional osteoclasts. Seems to also play a role in dendritic cells (DCs) maturation and/or activation. Represses c-Myb-mediated transactivation, in B-lymphocytes. Adapter protein that seems to play a role in signal transduction initiated via TNF receptor, IL-1 receptor and IL-17 receptor. Regulates osteoclast differentiation by mediating the activation of adapter protein complex 1 (AP-1) and NF-kappa-B, in response to RANK-L stimulation. Together with MAP3K8, mediates CD40 signals that activate ERK in B-cells and macrophages, and thus may play a role in the regulation of immunoglobulin production.

Aliases: E3 ubiquitin-protein ligase TRAF6 antibody, Interleukin 1 signal transducer antibody, Interleukin-1 signal transducer antibody, MGC 3310 antibody, MGC:3310 antibody, MGC3310 antibody, OTTHUMP00000232772 antibody, OTTHUMP00000232773 antibody, RING finger protein 85 antibody, RNF 85 antibody, RNF85 antibody, TNF receptor associated factor 6 antibody, TNF receptor-associated factor 6 antibody, TNF receptor-associated factor 6, E3 ubiquitin protein ligase antibody, TRAF 6 antibody, Traf6 antibody, TRAF6_HUMAN antibody

UniProt: [Q9Y4K3](#)

Pathways: [NF-kappaB Signaling](#), [TCR Signaling](#), [TLR Signaling](#), [Fc-epsilon Receptor Signaling Pathway](#), [Neurotrophin Signaling Pathway](#), [Activation of Innate immune Response](#), [Regulation of Leukocyte Mediated Immunity](#), [Positive Regulation of Immune Effector Process](#), [Production of Molecular Mediator of Immune Response](#), [Tube Formation](#), [Hepatitis C](#), [Toll-Like Receptors Cascades](#), [Ubiquitin Proteasome Pathway](#)

Application Details

Application Notes: Recommended dilution: IHC:1:20-1:200, IF:1:50-1:500,

Restrictions: For Research Use only

Handling

Format: Liquid

Buffer: Preservative: 0.03 % Proclin 300
Constituents: 50 % Glycerol, 0.01M PBS, PH 7.4

Preservative: ProClin

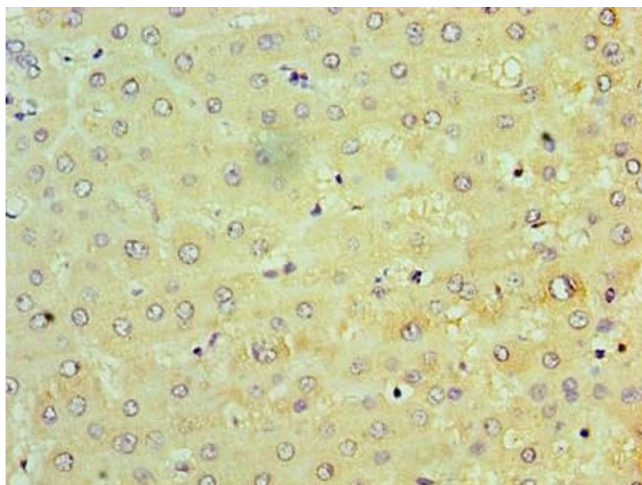
Precaution of Use: This product contains ProClin: a POISONOUS AND HAZARDOUS SUBSTANCE which should be handled by trained staff only.

Handling

Storage: -20 °C, -80 °C

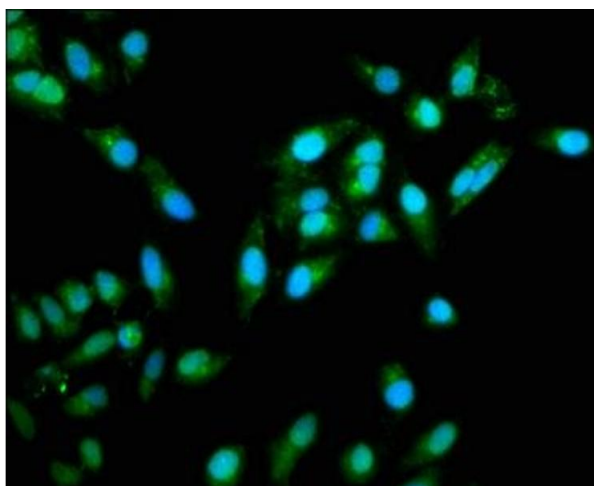
Storage Comment: Upon receipt, store at -20°C or -80°C. Avoid repeated freeze.

Images



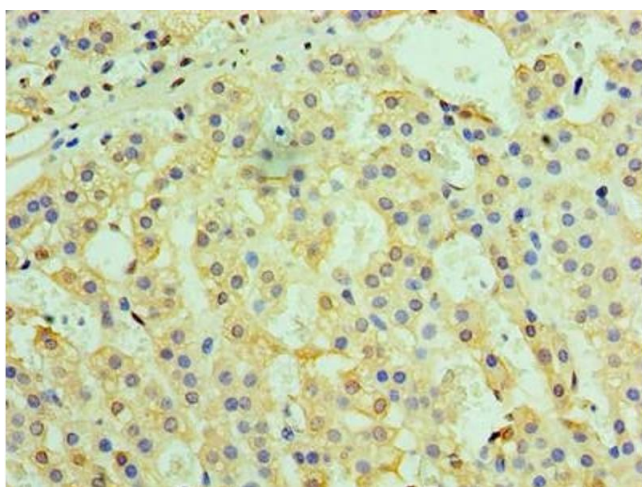
Immunohistochemistry

Image 1. Immunohistochemistry of paraffin-embedded human liver tissue using ABIN7172247 at dilution of 1:100



Immunofluorescence

Image 2. Immunofluorescence staining of HeLa cells with ABIN7172247 at 1:333, counter-stained with DAPI. The cells were fixed in 4% formaldehyde, permeabilized using 0.2% Triton X-100 and blocked in 10% normal Goat Serum. The cells were then incubated with the antibody overnight at 4°C. The secondary antibody was Alexa Fluor 488-conjugated AffiniPure Goat Anti-Rabbit IgG(H+L).



Immunohistochemistry

Image 3. Immunohistochemistry of paraffin-embedded human adrenal gland tissue using ABIN7172247 at dilution of 1:100