



[Go to Product page](#)

Datasheet for ABIN7172261
anti-TLR1 antibody (AA 25-580)

2 Images

Overview

Quantity:	100 µg
Target:	TLR1
Binding Specificity:	AA 25-580
Reactivity:	Human
Host:	Rabbit
Clonality:	Polyclonal
Conjugate:	This TLR1 antibody is un-conjugated
Application:	Immunohistochemistry (IHC), ELISA, Immunofluorescence (IF)

Product Details

Immunogen:	Recombinant Human Toll-like receptor 1 protein (25-580AA)
Isotype:	IgG
Cross-Reactivity:	Human
Purification:	>95%, Protein G purified

Target Details

Target:	TLR1
Alternative Name:	TLR1 (TLR1 Products)
Background:	Background: Participates in the innate immune response to microbial agents. Specifically recognizes diacylated and triacylated lipopeptides. Cooperates with TLR2 to mediate the innate

Target Details

immune response to bacterial lipoproteins or lipopeptides. Forms the activation cluster TLR2:TLR1:CD14 in response to triacylated lipopeptides, this cluster triggers signaling from the cell surface and subsequently is targeted to the Golgi in a lipid-raft dependent pathway. Acts via MYD88 and TRAF6, leading to NF-kappa-B activation, cytokine secretion and the inflammatory response.

Aliases: CD281 antibody, CD281 antigen antibody, KIAA0012 antibody, LPRS5 antibody, rsc786 antibody, TIL antibody, TIL. LPRS5 antibody, Tlr1 antibody, TLR1_HUMAN antibody, Toll (Drosophila) homolog antibody, Toll like receptor 1 antibody, Toll-like receptor 1 antibody, Toll/interleukin-1 receptor-like protein antibody

UniProt: [Q15399](#)

Pathways: [TLR Signaling](#), [Activation of Innate immune Response](#), [Cellular Response to Molecule of Bacterial Origin](#), [Toll-Like Receptors Cascades](#)

Application Details

Application Notes: Recommended dilution: IHC:1:20-1:200, IF:1:50-1:200,

Restrictions: For Research Use only

Handling

Format: Liquid

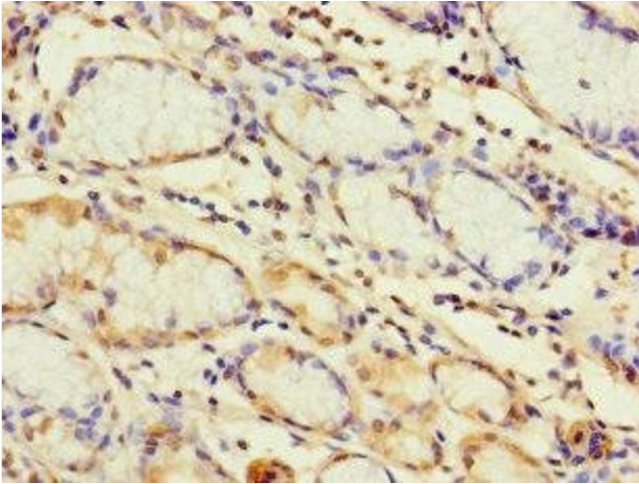
Buffer: Preservative: 0.03 % Proclin 300
Constituents: 50 % Glycerol, 0.01M PBS, PH 7.4

Preservative: ProClin

Precaution of Use: This product contains ProClin: a POISONOUS AND HAZARDOUS SUBSTANCE which should be handled by trained staff only.

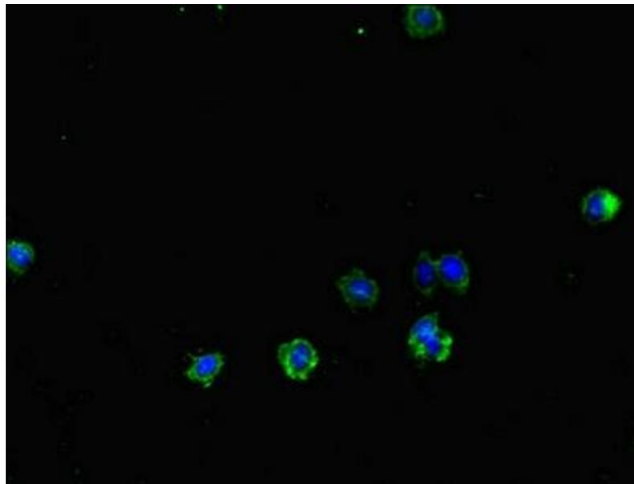
Storage: -20 °C,-80 °C

Storage Comment: Upon receipt, store at -20°C or -80°C. Avoid repeated freeze.



Immunohistochemistry

Image 1. Immunohistochemistry of paraffin-embedded human gastric cancer using ABIN7172261 at dilution of 1:100



Immunofluorescence

Image 2. Immunofluorescent analysis of HepG2 cells using ABIN7172261 at dilution of 1:100 and Alexa Fluor 488-conjugated AffiniPure Goat Anti-Rabbit IgG(H+L)