



[Go to Product page](#)

Datasheet for ABIN7172373

## anti-TRAPPC8 antibody (AA 1205-1435)

### 1 Image

#### Overview

Quantity:	100 µL
Target:	TRAPPC8
Binding Specificity:	AA 1205-1435
Reactivity:	Human
Host:	Rabbit
Clonality:	Polyclonal
Conjugate:	This TRAPPC8 antibody is un-conjugated
Application:	ELISA, Immunohistochemistry (IHC)

#### Product Details

Immunogen:	Recombinant Human Trafficking protein particle complex subunit 8 protein (1205-1435AA)
Isotype:	IgG
Cross-Reactivity:	Human
Purification:	Antigen Affinity Purified

#### Target Details

Target:	TRAPPC8
Alternative Name:	TRAPPC8 ( <a href="#">TRAPPC8 Products</a> )
Background:	Background: May be involved in endoplasmic reticulum to Golgi apparatus trafficking at a very early stage.

## Target Details

Aliases: General sporulation gene 1 homolog antibody, GSG1 antibody, HsT2706 antibody, KIAA1012 antibody, Protein TRS85 homolog antibody, TPPC8\_HUMAN antibody, Trafficking protein particle complex subunit 8 antibody, TRAPPC8 antibody, TRS85 antibody

UniProt: [Q9Y2L5](#)

## Application Details

Application Notes: Recommended dilution: IHC:1:20-1:200,

Restrictions: For Research Use only

## Handling

Format: Liquid

Buffer: Preservative: 0.03 % Proclin 300  
Constituents: 50 % Glycerol, 0.01M PBS, pH 7.4

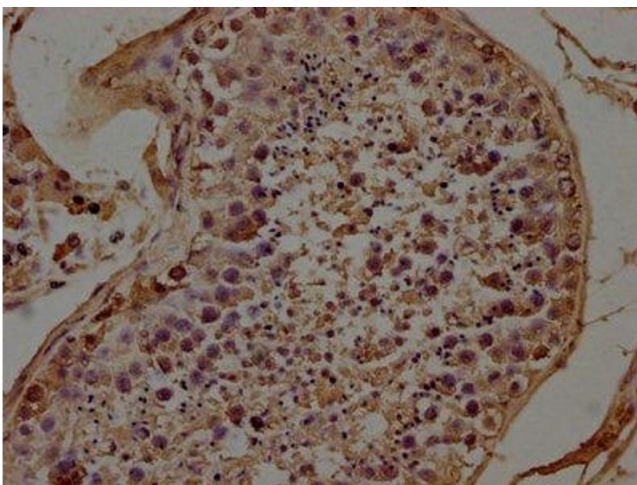
Preservative: ProClin

Precaution of Use: This product contains ProClin: a POISONOUS AND HAZARDOUS SUBSTANCE which should be handled by trained staff only.

Storage: -20 °C,-80 °C

Storage Comment: Upon receipt, store at -20°C or -80°C. Avoid repeated freeze.

## Images



### Immunohistochemistry

**Image 1.** IHC image of ABIN7172373 diluted at 1:100 and staining in paraffin-embedded human testis tissue performed on a Leica Bond™ system. After dewaxing and hydration, antigen retrieval was mediated by high pressure in a citrate buffer (pH 6.0). Section was blocked with 10 % normal goat serum 30 min at RT. Then primary antibody (1 % BSA) was incubated at 4 °C overnight. The primary is detected by a biotinylated secondary antibody and visualized using an HRP conjugated SP system.