



[Go to Product page](#)

Datasheet for ABIN7172377

## anti-TRAPPC9 antibody (AA 780-1030)

### 2 Images

#### Overview

Quantity:	100 µg
Target:	TRAPPC9
Binding Specificity:	AA 780-1030
Reactivity:	Human
Host:	Rabbit
Clonality:	Polyclonal
Conjugate:	This TRAPPC9 antibody is un-conjugated
Application:	ELISA, Immunohistochemistry (IHC), Immunofluorescence (IF)

#### Product Details

Immunogen:	Recombinant Human Trafficking protein particle complex subunit 9 protein (780-1030AA)
Isotype:	IgG
Cross-Reactivity:	Human
Purification:	>95%, Protein G purified

#### Target Details

Target:	TRAPPC9
Alternative Name:	TRAPPC9 ( <a href="#">TRAPPC9 Products</a> )
Background:	Background: Functions as an activator of NF-kappa-B through increased phosphorylation of the IKK complex. May function in neuronal cells differentiation. May play a role in vesicular

## Target Details

transport from endoplasmic reticulum to Golgi.

Aliases: TRAPPC9 antibody, KIAA1882 antibody, NIBP antibody, T1 antibody, Trafficking protein particle complex subunit 9 antibody, NIK- and IKBKB-binding protein antibody, Tularik gene 1 protein antibody

UniProt: [Q96Q05](#)

## Application Details

Application Notes: Recommended dilution: IHC:1:20-1:200, IF:1:50-1:200,

Restrictions: For Research Use only

## Handling

Format: Liquid

Buffer: Preservative: 0.03 % Proclin 300  
Constituents: 50 % Glycerol, 0.01M PBS, PH 7.4

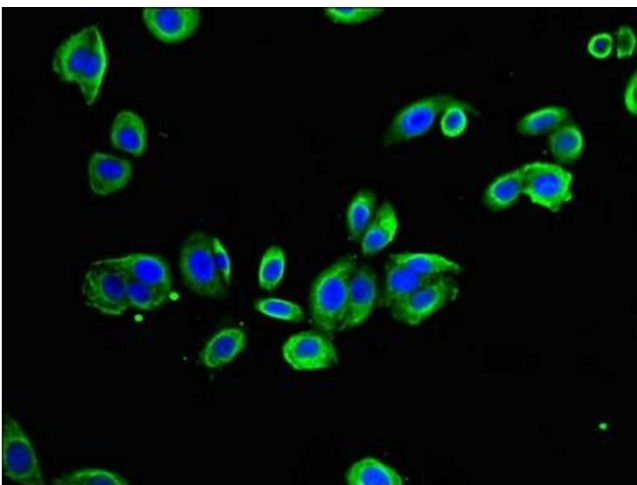
Preservative: ProClin

Precaution of Use: This product contains ProClin: a POISONOUS AND HAZARDOUS SUBSTANCE which should be handled by trained staff only.

Storage: -20 °C,-80 °C

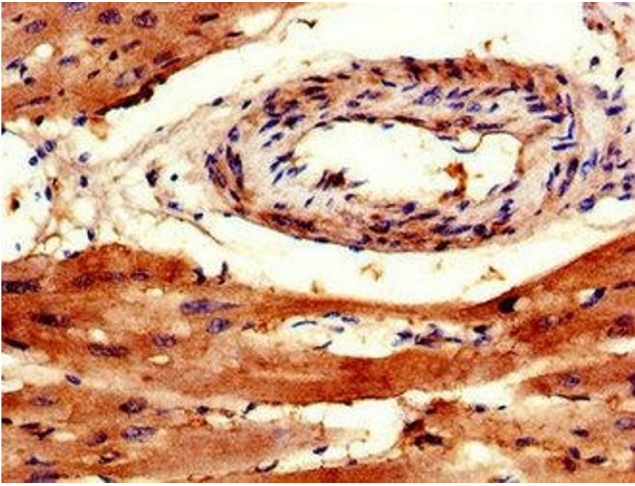
Storage Comment: Upon receipt, store at -20°C or -80°C. Avoid repeated freeze.

## Images



### Immunofluorescence

**Image 1.** Immunofluorescent analysis of HepG2 cells using ABIN7172377 at dilution of 1:100 and Alexa Fluor 488-conjugated AffiniPure Goat Anti-Rabbit IgG(H+L)



### Immunohistochemistry

**Image 2.** Immunohistochemistry of paraffin-embedded human heart tissue using ABIN7172377 at dilution of 1:100